

**NO CONSTRUCTION  
PROPOSED IN THIS AREA**



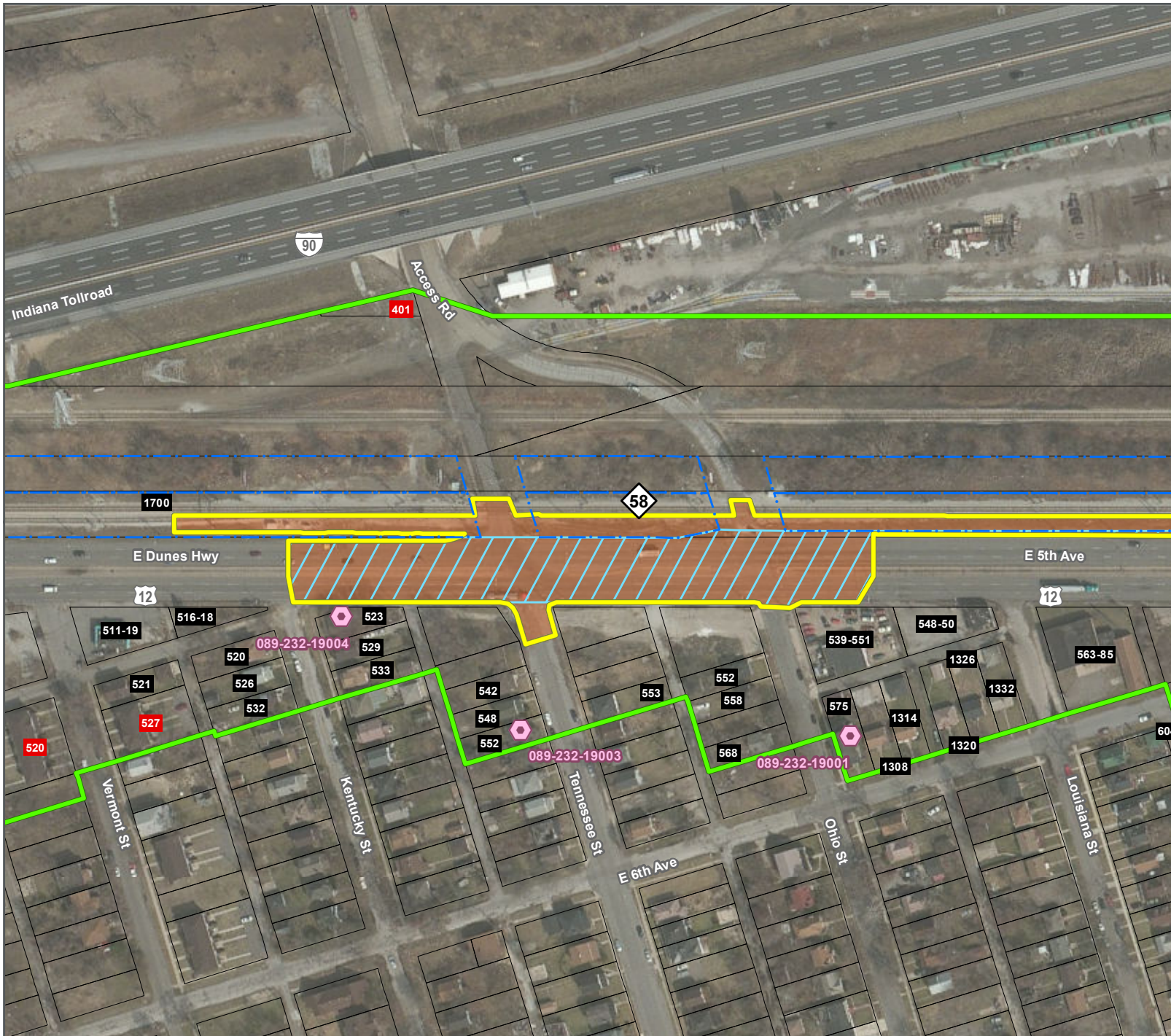
- Proposed Construction Footprint - 3/23/2017
- Anticipated Acquisition
- Proposed Direct Effects APE - 4/12/2017
- Proposed Indirect Effects APE - 4/12/2017
- Current Railroad Right-of-Way
- Milepost
- NICTD Station
- National Register of Historic Places  
Historic Property
- Indiana Historic Sites and Structures Inventory  
Surveyed Historic Resource – Outstanding
- Indiana Historic Sites and Structures Inventory  
Surveyed Historic Resource – Noteworthy
- Indiana Historic Sites and Structures Inventory  
Surveyed Historic Resource – Contributing
- Swedish Farmstead
- Not Extant
- National Register of Historic Places  
Historic District
- Indiana Dunes National Lakeshore
- Indiana Dunes State Park
- Parcel Boundary
- Surveyed
- Not Surveyed Due to Age

**AREA OF POTENTIAL  
EFFECTS (APE)**



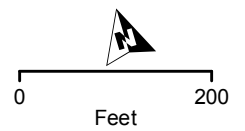
BACKGROUND SOURCE: ESRI, DIGITALGLOBE, GEOEYE, EARTHSTAR GEOGRAPHICS, CNES/AIRBUS DS, USDA, USGS, AEX, GETMAPPING, AEROGRIID, IGN, IGP, SWISSTOPO, AND THE GIS USER COMMUNITY





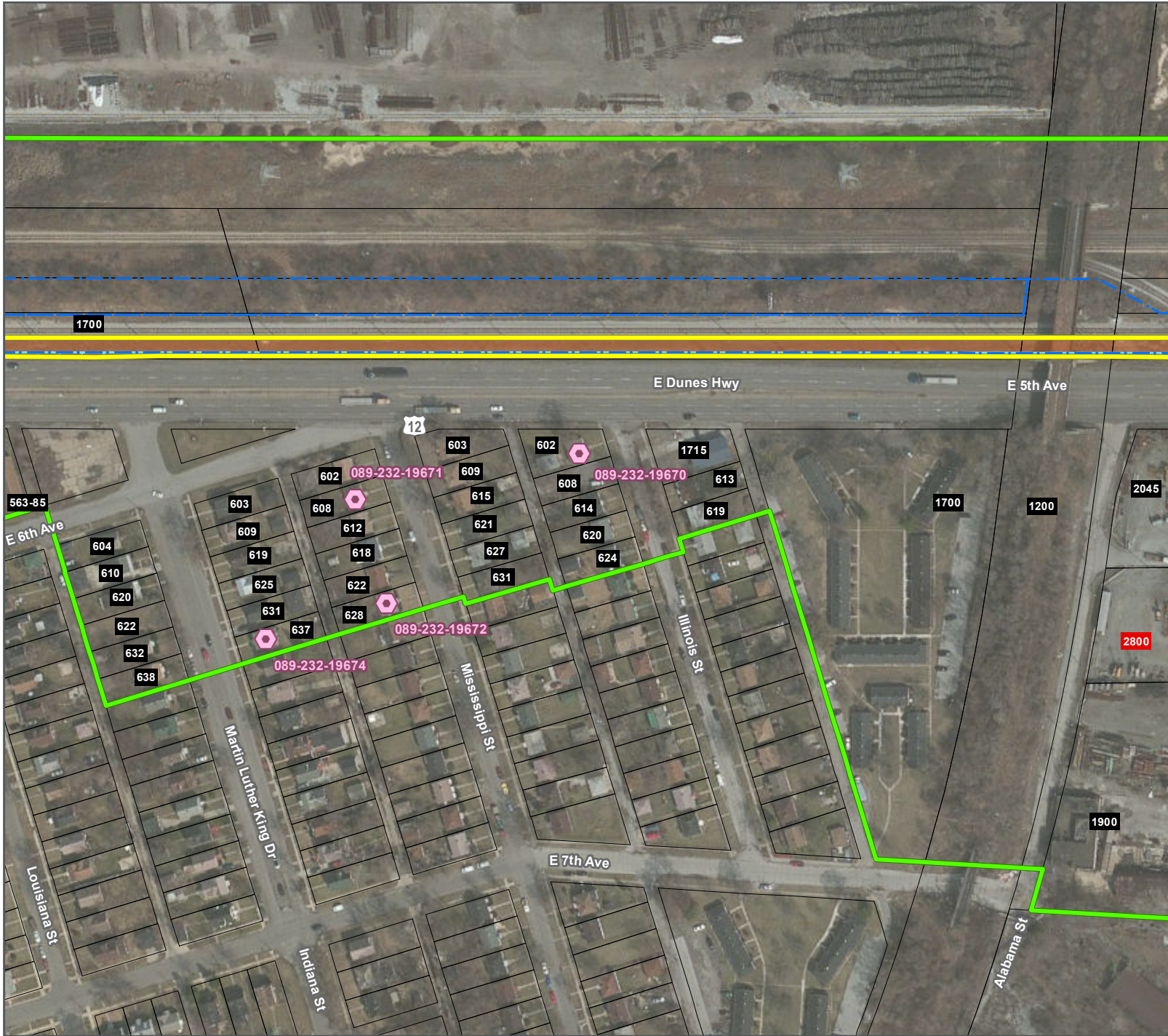
- Proposed Construction Footprint - 3/23/2017
- Anticipated Acquisition
- Proposed Direct Effects APE - 4/12/2017
- Proposed Indirect Effects APE - 4/12/2017
- Current Railroad Right-of-Way
- Milepost
- NICTD Station
- National Register of Historic Places Historic Property
- Indiana Historic Sites and Structures Inventory Surveyed Historic Resource – Outstanding
- Indiana Historic Sites and Structures Inventory Surveyed Historic Resource – Noteworthy
- Indiana Historic Sites and Structures Inventory Surveyed Historic Resource – Contributing
- Swedish Farmstead
- Not Extant
- National Register of Historic Places Historic District
- Indiana Dunes National Lakeshore
- Indiana Dunes State Park
- Parcel Boundary
- Surveyed
- Not Surveyed Due to Age

### AREA OF POTENTIAL EFFECTS (APE)



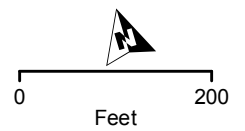
BACKGROUND SOURCE: ESRI, DIGITALGLOBE, GEOEYE, EARTHSTAR GEOGRAPHICS, CNES/AIRBUS DS, USDA, USGS, AEX, GETMAPPING, AEROGRIID, IGN, IGP, SWISSTOPO, AND THE GIS USER COMMUNITY





- Proposed Construction Footprint - 3/23/2017
- Anticipated Acquisition
- Proposed Direct Effects APE - 4/12/2017
- Proposed Indirect Effects APE - 4/12/2017
- Current Railroad Right-of-Way
- Milepost
- NICTD Station
- National Register of Historic Places Historic Property
- Indiana Historic Sites and Structures Inventory Surveyed Historic Resource – Outstanding
- Indiana Historic Sites and Structures Inventory Surveyed Historic Resource – Noteworthy
- Indiana Historic Sites and Structures Inventory Surveyed Historic Resource – Contributing
- Swedish Farmstead
- Not Extant
- National Register of Historic Places Historic District
- Indiana Dunes National Lakeshore
- Indiana Dunes State Park
- Parcel Boundary
- Surveyed
- Not Surveyed Due to Age

### AREA OF POTENTIAL EFFECTS (APE)



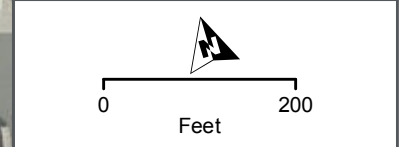
BACKGROUND SOURCE: ESRI, DIGITALGLOBE, GEOEYE, EARTHSTAR GEOGRAPHICS, CNES/AIRBUS DS, USDA, USGS, AEX, GETMAPPING, AEROGRIID, IGN, IGP, SWISSTOPO, AND THE GIS USER COMMUNITY





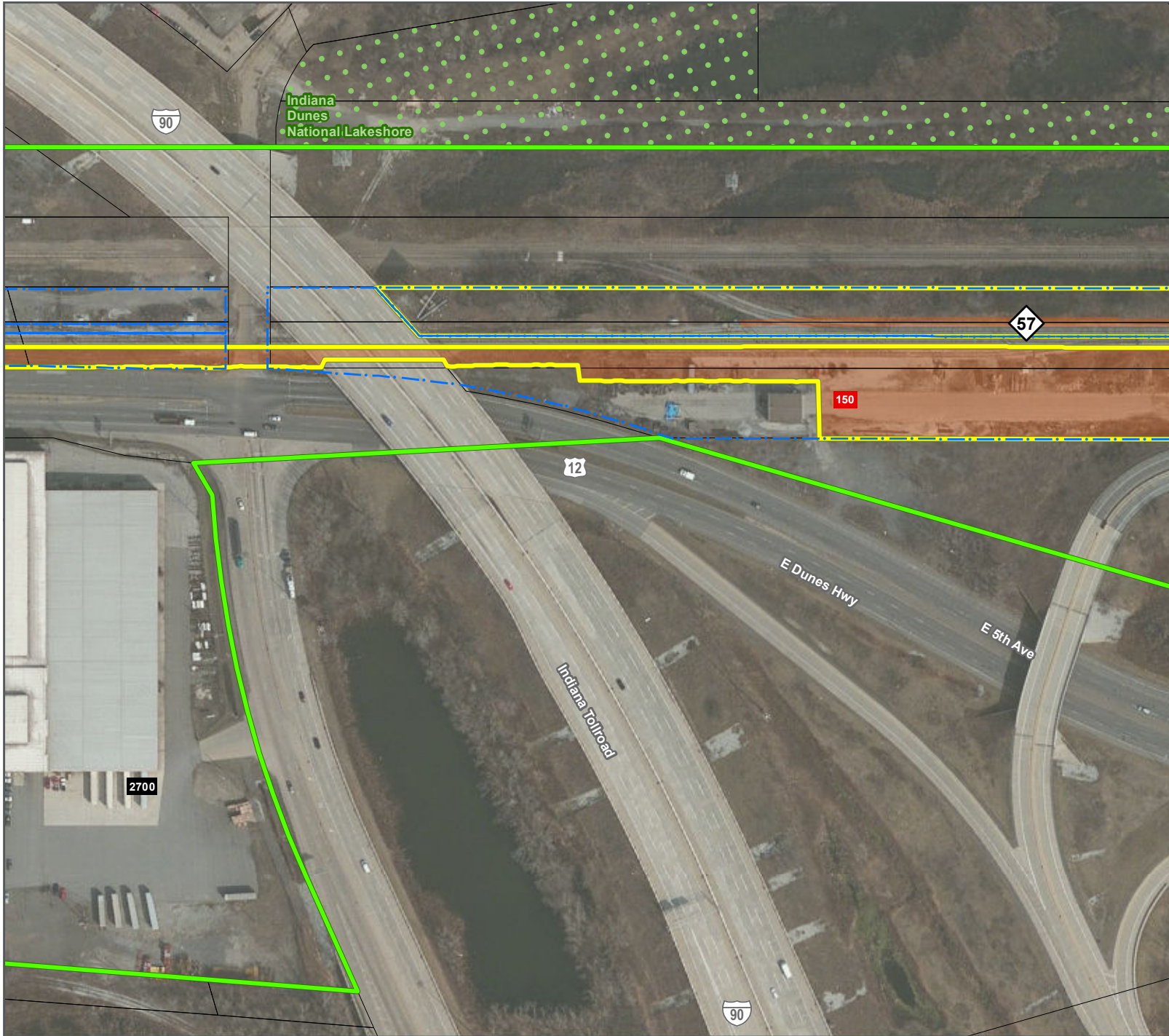
- Proposed Construction Footprint - 3/23/2017
- Anticipated Acquisition
- Proposed Direct Effects APE - 4/12/2017
- Proposed Indirect Effects APE - 4/12/2017
- Current Railroad Right-of-Way
- Milepost
- NICTD Station
- National Register of Historic Places Historic Property
- Indiana Historic Sites and Structures Inventory Surveyed Historic Resource – Outstanding
- Indiana Historic Sites and Structures Inventory Surveyed Historic Resource – Noteworthy
- Indiana Historic Sites and Structures Inventory Surveyed Historic Resource – Contributing
- Swedish Farmstead
- Not Extant
- National Register of Historic Places Historic District
- Indiana Dunes National Lakeshore
- Indiana Dunes State Park
- Parcel Boundary
- Surveyed
- Not Surveyed Due to Age





## AREA OF POTENTIAL EFFECTS (APE)



SHEET 4 OF 92





-  Proposed Construction Footprint - 3/23/2017
-  Anticipated Acquisition
-  Proposed Direct Effects APE - 4/12/2017
-  Proposed Indirect Effects APE - 4/12/2017
-  Current Railroad Right-of-Way
-  Milepost
-  NICTD Station
-  National Register of Historic Places  
Historic Property
-  Indiana Historic Sites and Structures Inventory  
Surveyed Historic Resource – Outstanding
-  Indiana Historic Sites and Structures Inventory  
Surveyed Historic Resource – Noteworthy
-  Indiana Historic Sites and Structures Inventory  
Surveyed Historic Resource – Contributing
-  Swedish Farmstead
-  Not Extant
-  National Register of Historic Places  
Historic District
-  Indiana Dunes National Lakeshore
-  Indiana Dunes State Park
-  Parcel Boundary
-  Surveyed
-  Not Surveyed Due to Age

## AREA OF POTENTIAL EFFECTS (APE)



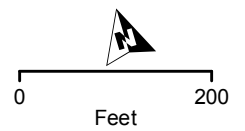
BACKGROUND SOURCE: ESRI, DIGITALGLOBE, GEOEYE, EARTHSTAR GEOGRAPHICS, CNES/AIRBUS DS, USDA, USGS, AEX, GETMAPPING, AEROGRIID, IGP, SWISSTOPO, AND THE GIS USER COMMUNITY





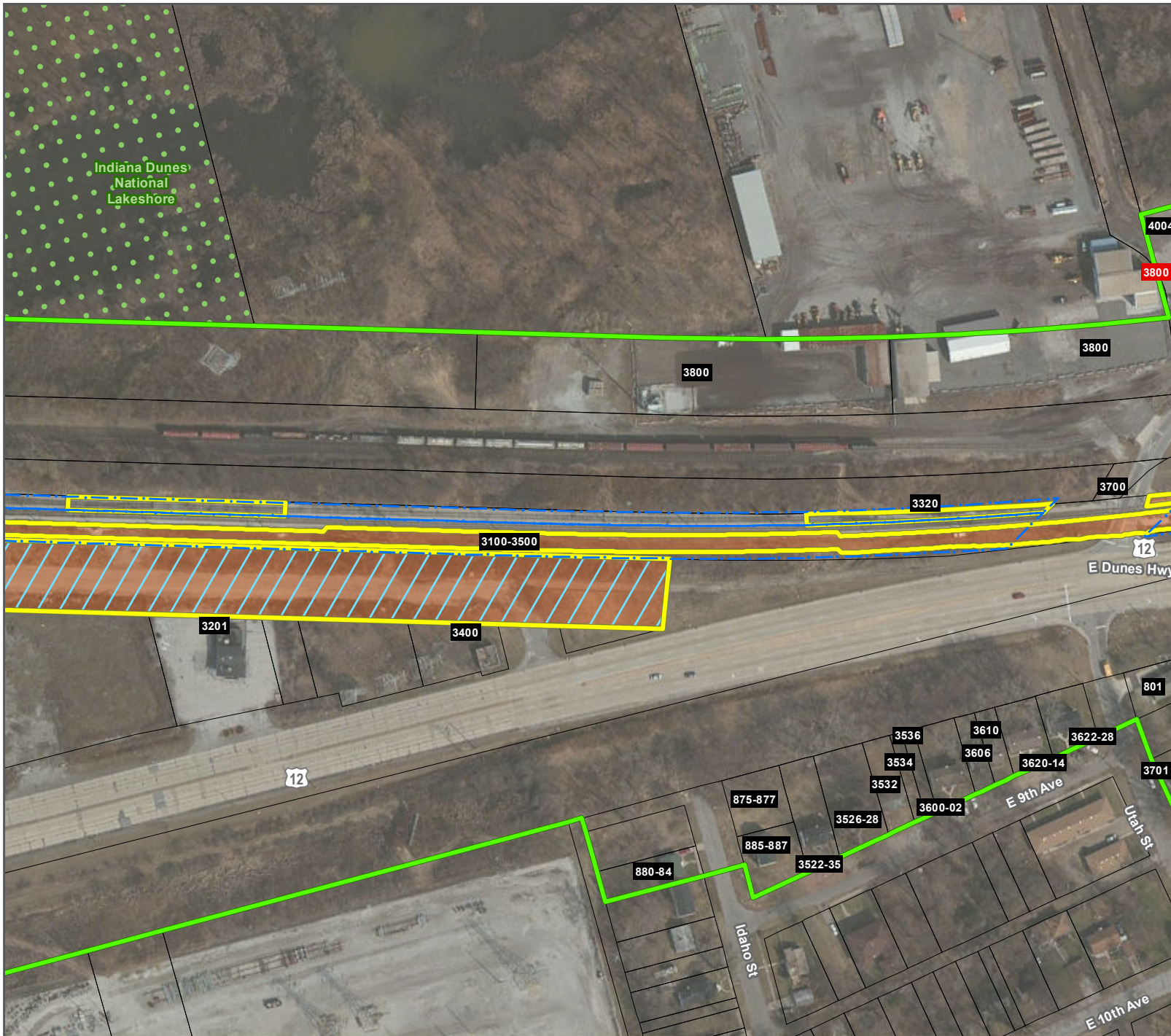
- Proposed Construction Footprint - 3/23/2017
- Anticipated Acquisition
- Proposed Direct Effects APE - 4/12/2017
- Proposed Indirect Effects APE - 4/12/2017
- Current Railroad Right-of-Way
- Milepost
- NICTD Station
- National Register of Historic Places Historic Property
- Indiana Historic Sites and Structures Inventory Surveyed Historic Resource – Outstanding
- Indiana Historic Sites and Structures Inventory Surveyed Historic Resource – Noteworthy
- Indiana Historic Sites and Structures Inventory Surveyed Historic Resource – Contributing
- Swedish Farmstead
- Not Extant
- National Register of Historic Places Historic District
- Indiana Dunes National Lakeshore
- Indiana Dunes State Park
- Parcel Boundary
- Surveyed
- Not Surveyed Due to Age

### AREA OF POTENTIAL EFFECTS (APE)



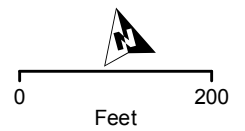
BACKGROUND SOURCE: ESRI, DIGITALGLOBE, GEOEYE, EARTHSTAR GEOGRAPHICS, CNES/AIRBUS DS, USDA, USGS, AEX, GETMAPPING, AEROGRIID, IGN, IGP, SWISSTOPO, AND THE GIS USER COMMUNITY





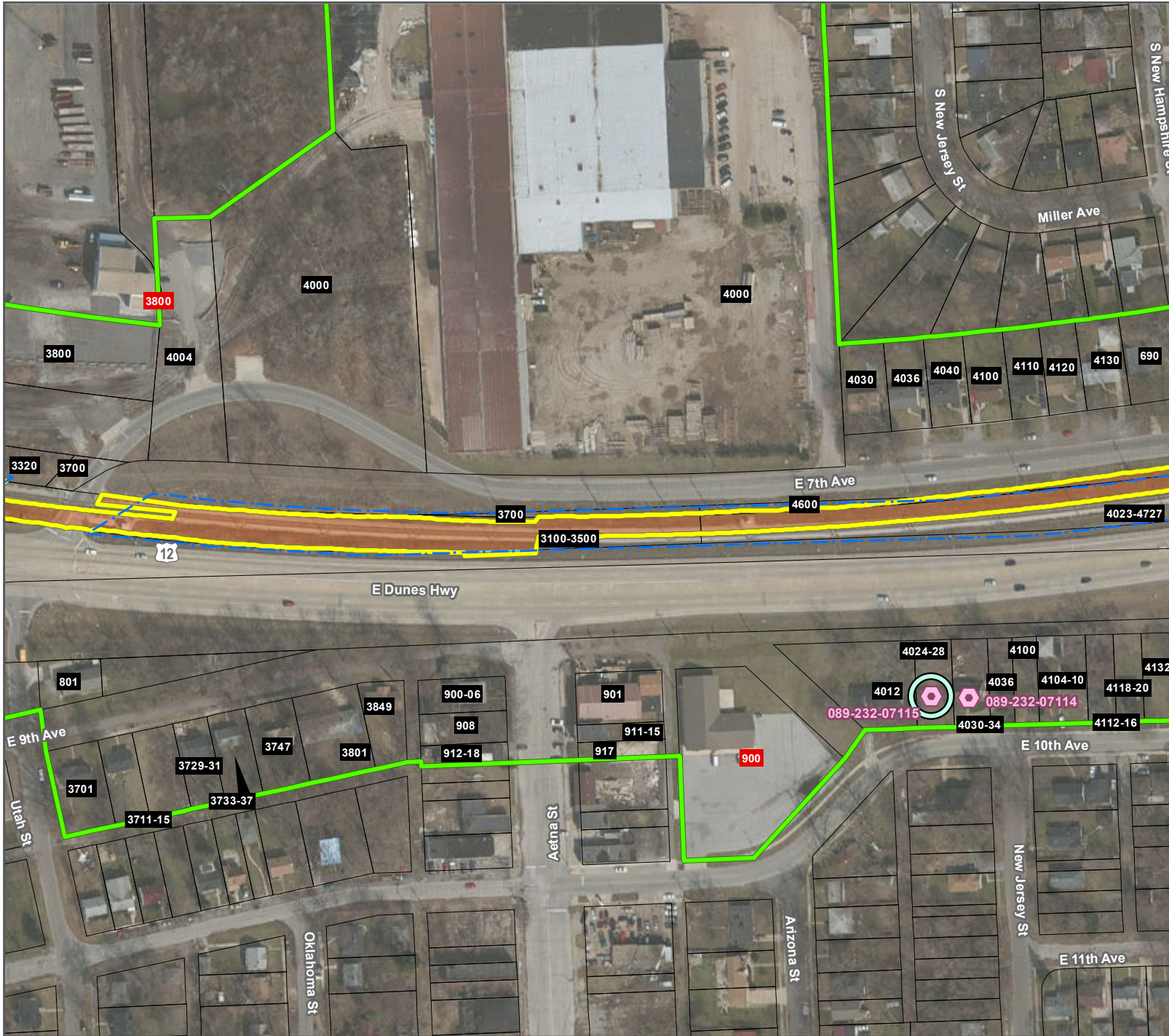
- Proposed Construction Footprint - 3/23/2017
- Anticipated Acquisition
- Proposed Direct Effects APE - 4/12/2017
- Proposed Indirect Effects APE - 4/12/2017
- Current Railroad Right-of-Way
- Milepost
- NICTD Station
- National Register of Historic Places Historic Property
- Indiana Historic Sites and Structures Inventory Surveyed Historic Resource – Outstanding
- Indiana Historic Sites and Structures Inventory Surveyed Historic Resource – Noteworthy
- Indiana Historic Sites and Structures Inventory Surveyed Historic Resource – Contributing
- Swedish Farmstead
- Not Extant
- National Register of Historic Places Historic District
- Indiana Dunes National Lakeshore
- Indiana Dunes State Park
- Parcel Boundary
- Surveyed
- Not Surveyed Due to Age

### AREA OF POTENTIAL EFFECTS (APE)



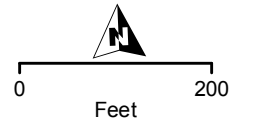
BACKGROUND SOURCE: ESRI, DIGITALGLOBE, GEOEYE, EARTHSTAR GEOGRAPHICS, CNES/AIRBUS DS, USDA, USGS, AEX, GETMAPPING, AEROGRIID, IGN, IGP, SWISSTOPO, AND THE GIS USER COMMUNITY





- Proposed Construction Footprint - 3/23/2017
- Anticipated Acquisition
- Proposed Direct Effects APE - 4/12/2017
- Proposed Indirect Effects APE - 4/12/2017
- Current Railroad Right-of-Way
- Milepost
- NICTD Station
- National Register of Historic Places  
Historic Property
- Indiana Historic Sites and Structures Inventory  
Surveyed Historic Resource – Outstanding
- Indiana Historic Sites and Structures Inventory  
Surveyed Historic Resource – Noteworthy
- Indiana Historic Sites and Structures Inventory  
Surveyed Historic Resource – Contributing
- Swedish Farmstead
- Not Extant
- National Register of Historic Places  
Historic District
- Indiana Dunes National Lakeshore
- Indiana Dunes State Park
- Parcel Boundary
- # Surveyed  # Not Surveyed Due to Age

## AREA OF POTENTIAL EFFECTS (APE)



BACKGROUND SOURCE: ESRI, DIGITALGLOBE, GEOEYE, EARTHSTAR GEOGRAPHICS, CNES/AIRBUS DS, USDA, USGS, AEX, GETMAPPING, AEROGRIID, IGN, IGP, SWISSTOPO, AND THE GIS USER COMMUNITY

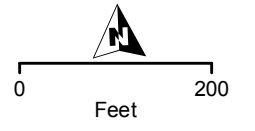


**NO CONSTRUCTION  
PROPOSED IN THIS AREA**



- Proposed Construction Footprint - 3/23/2017
- Anticipated Acquisition
- Proposed Direct Effects APE - 4/12/2017
- Proposed Indirect Effects APE - 4/12/2017
- Current Railroad Right-of-Way
- Milepost
- NICTD Station
- National Register of Historic Places  
Historic Property
- Indiana Historic Sites and Structures Inventory  
Surveyed Historic Resource – Outstanding
- Indiana Historic Sites and Structures Inventory  
Surveyed Historic Resource – Noteworthy
- Indiana Historic Sites and Structures Inventory  
Surveyed Historic Resource – Contributing
- Swedish Farmstead
- Not Extant
- National Register of Historic Places  
Historic District
- Indiana Dunes National Lakeshore
- Indiana Dunes State Park
- Parcel Boundary
- Surveyed
- Not Surveyed Due to Age

**AREA OF POTENTIAL  
EFFECTS (APE)**



BACKGROUND SOURCE: ESRI, DIGITALGLOBE, GEOEYE, EARTHSTAR GEOGRAPHICS, CNES/AIRBUS DS, USDA, USGS, AEX, GETMAPPING, AEROGRIID, IGN, IGP, SWISSTOPO, AND THE GIS USER COMMUNITY





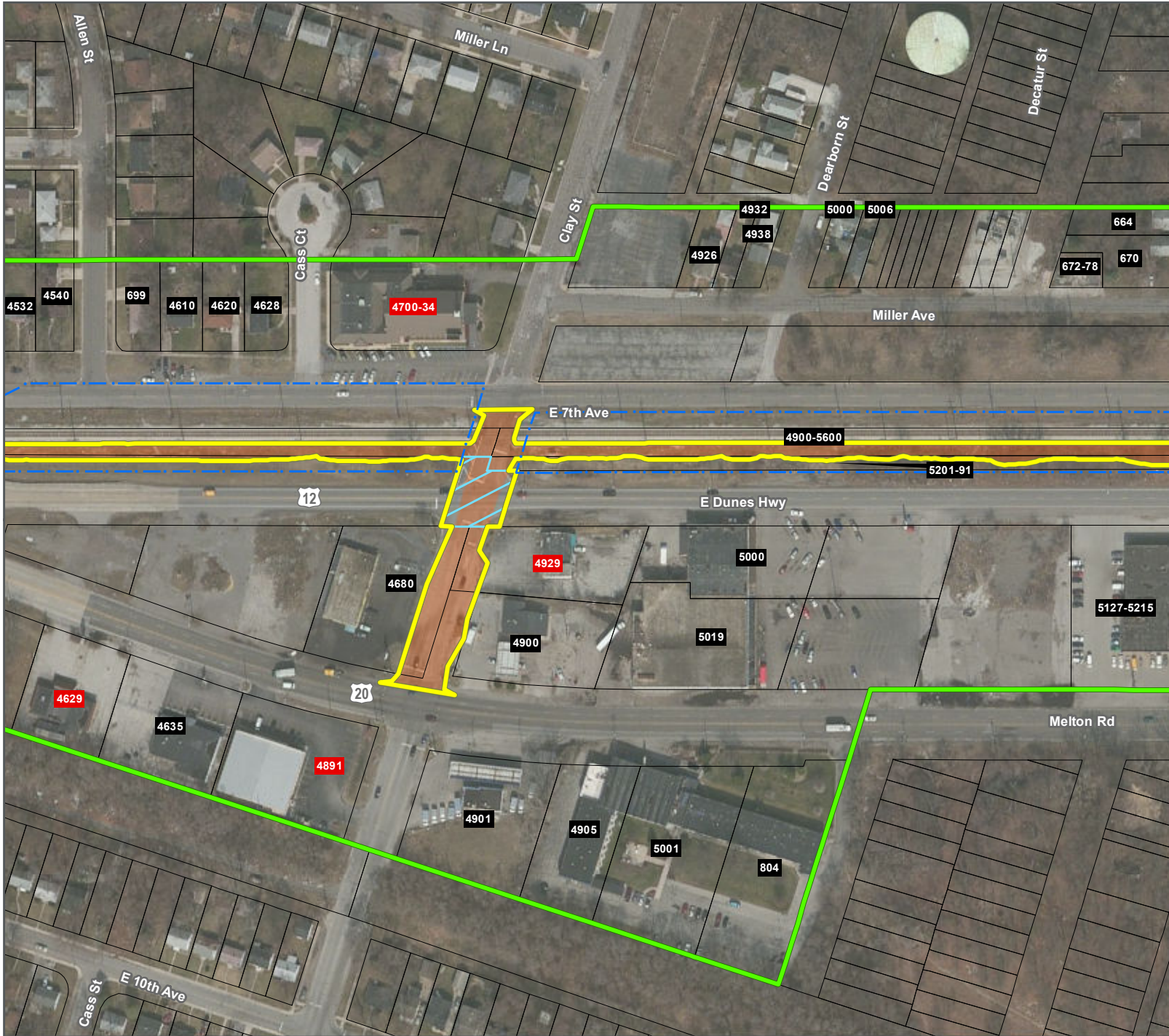
- Proposed Construction Footprint - 3/23/2017
- Anticipated Acquisition
- Proposed Direct Effects APE - 4/12/2017
- Proposed Indirect Effects APE - 4/12/2017
- Current Railroad Right-of-Way
- Milepost
- NICTD Station
- National Register of Historic Places Historic Property
- Indiana Historic Sites and Structures Inventory Surveyed Historic Resource – Outstanding
- Indiana Historic Sites and Structures Inventory Surveyed Historic Resource – Noteworthy
- Indiana Historic Sites and Structures Inventory Surveyed Historic Resource – Contributing
- Swedish Farmstead
- Not Extant
- National Register of Historic Places Historic District
- Indiana Dunes National Lakeshore
- Indiana Dunes State Park
- Parcel Boundary
- Surveyed
- Not Surveyed Due to Age

## AREA OF POTENTIAL EFFECTS (APE)



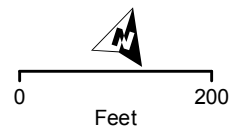
BACKGROUND SOURCE: ESRI, DIGITALGLOBE, GEOEYE, EARTHSTAR GEOGRAPHICS, CNES/AIRBUS DS, USDA, USGS, AEX, GETMAPPING, AEROGRIID, IGN, IGP, SWISSTOPO, AND THE GIS USER COMMUNITY





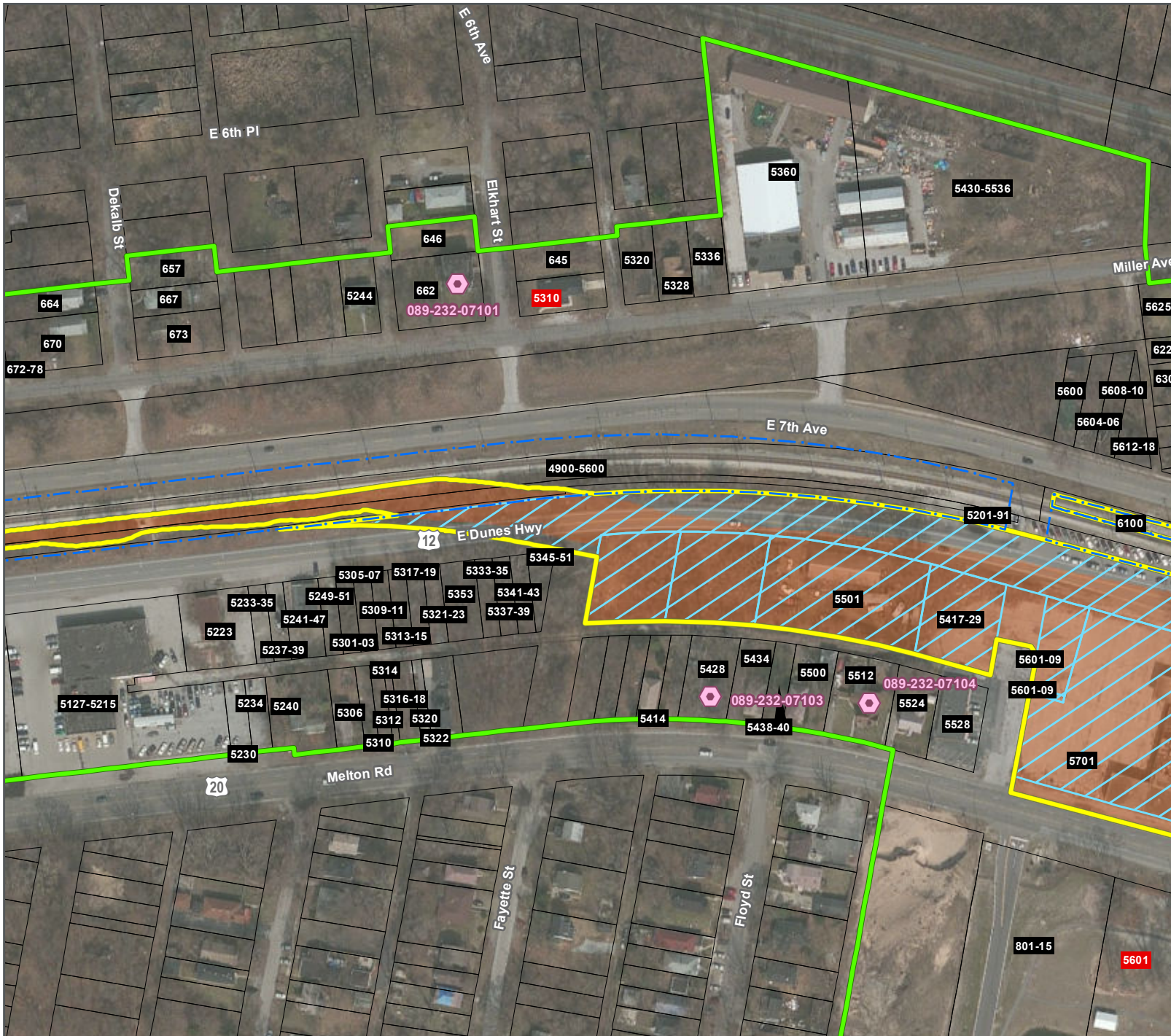
- Sheet Location
- Proposed Construction Footprint - 3/23/2017
- Anticipated Acquisition
- Proposed Direct Effects APE - 4/12/2017
- Proposed Indirect Effects APE - 4/12/2017
- Current Railroad Right-of-Way
- Milepost
- NICTD Station
- National Register of Historic Places Historic Property
- Indiana Historic Sites and Structures Inventory Surveyed Historic Resource – Outstanding
- Indiana Historic Sites and Structures Inventory Surveyed Historic Resource – Noteworthy
- Indiana Historic Sites and Structures Inventory Surveyed Historic Resource – Contributing
- Swedish Farmstead
- Not Extant
- National Register of Historic Places Historic District
- Indiana Dunes National Lakeshore
- Indiana Dunes State Park
- Parcel Boundary
- Surveyed
- Not Surveyed Due to Age

### AREA OF POTENTIAL EFFECTS (APE)



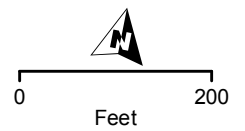
BACKGROUND SOURCE: ESRI, DIGITALGLOBE, GEOEYE, EARTHSTAR GEOGRAPHICS, CNES/AIRBUS DS, USDA, USGS, AEX, GETMAPPING, AEROGRIID, IGN, IGP, SWISSTOPO, AND THE GIS USER COMMUNITY





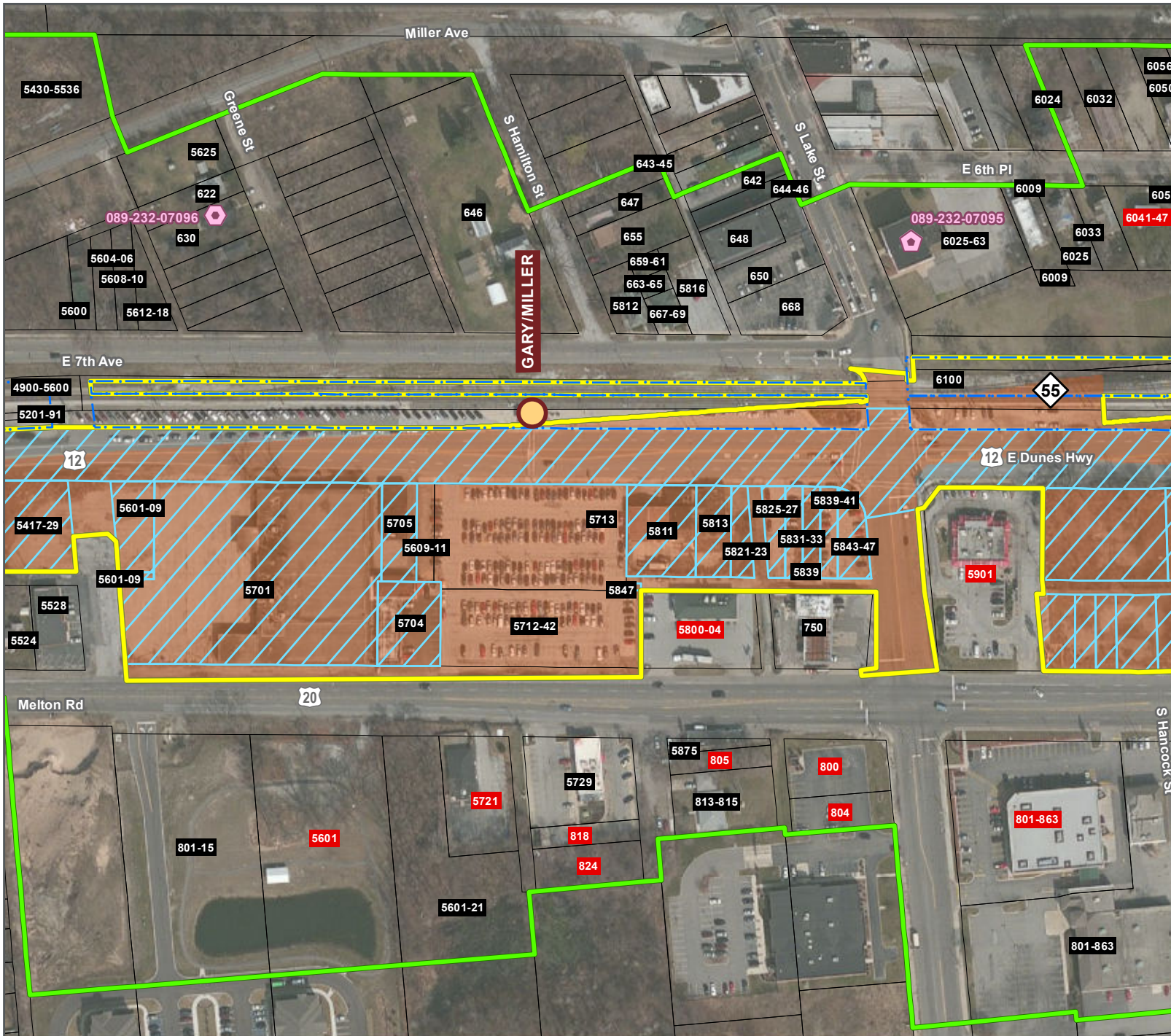
- Proposed Construction Footprint - 3/23/2017
- Anticipated Acquisition
- Proposed Direct Effects APE - 4/12/2017
- Proposed Indirect Effects APE - 4/12/2017
- Current Railroad Right-of-Way
- Milepost
- NICTD Station
- National Register of Historic Places Historic Property
- Indiana Historic Sites and Structures Inventory Surveyed Historic Resource – Outstanding
- Indiana Historic Sites and Structures Inventory Surveyed Historic Resource – Noteworthy
- Indiana Historic Sites and Structures Inventory Surveyed Historic Resource – Contributing
- Swedish Farmstead
- Not Extant
- National Register of Historic Places Historic District
- Indiana Dunes National Lakeshore
- Indiana Dunes State Park
- Parcel Boundary
- # Surveyed
- # Not Surveyed Due to Age

## AREA OF POTENTIAL EFFECTS (APE)



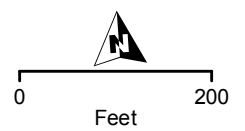
BACKGROUND SOURCE: ESRI, DIGITALGLOBE, GEOEYE, EARTHSTAR GEOGRAPHICS, CNES/AIRBUS DS, USDA, USGS, AEX, GETMAPPING, AEROGRIID, IGN, IGP, SWISSTOPO, AND THE GIS USER COMMUNITY





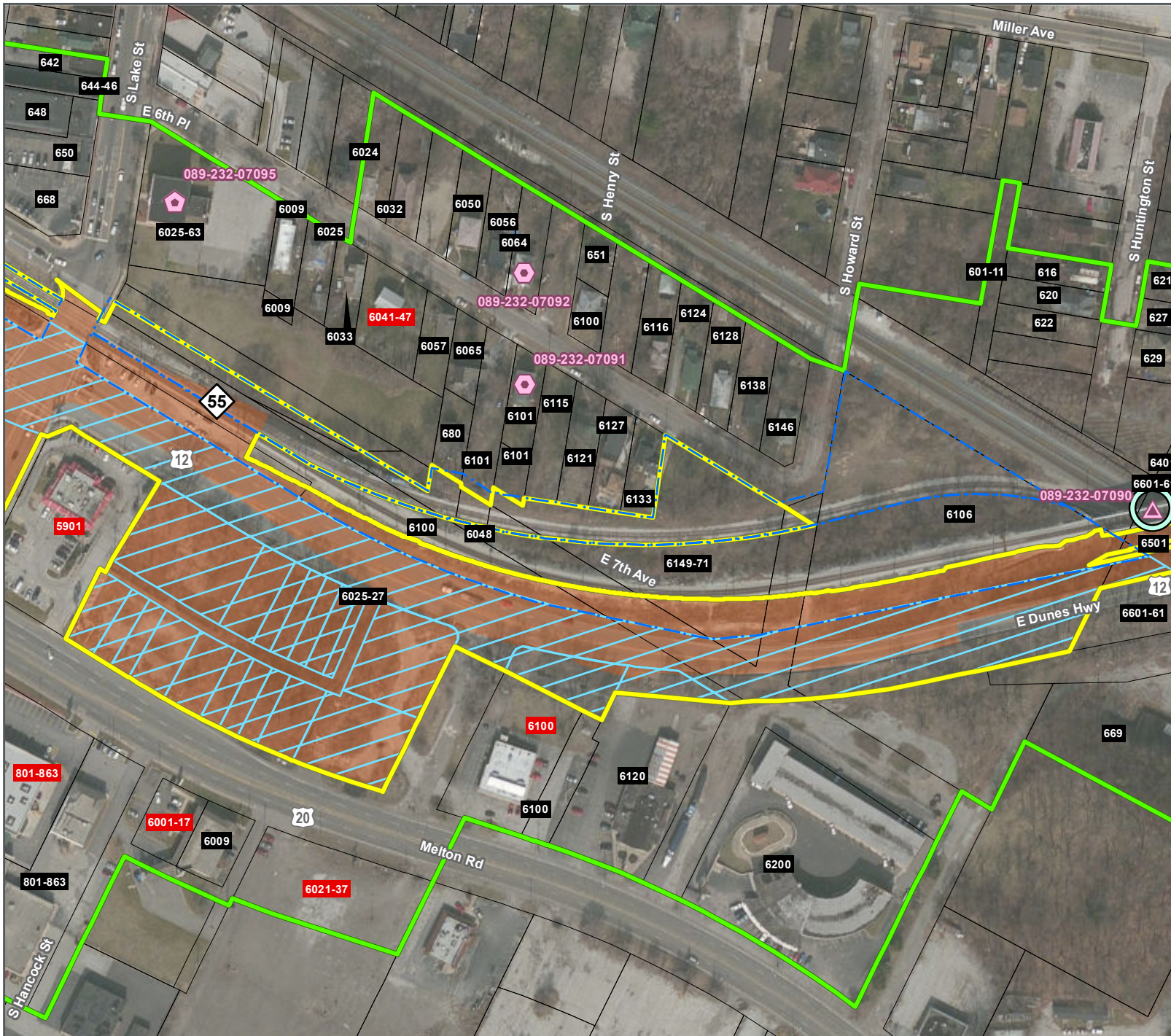
- Proposed Construction Footprint - 3/23/2017
- Anticipated Acquisition
- Proposed Direct Effects APE - 4/12/2017
- Proposed Indirect Effects APE - 4/12/2017
- Current Railroad Right-of-Way
- Milepost
- NICTD Station
- National Register of Historic Places Historic Property
- Indiana Historic Sites and Structures Inventory Surveyed Historic Resource – Outstanding
- Indiana Historic Sites and Structures Inventory Surveyed Historic Resource – Noteworthy
- Indiana Historic Sites and Structures Inventory Surveyed Historic Resource – Contributing
- Swedish Farmstead
- Not Extant
- National Register of Historic Places Historic District
- Indiana Dunes National Lakeshore
- Indiana Dunes State Park
- Parcel Boundary
- # Surveyed  # Not Surveyed Due to Age

## AREA OF POTENTIAL EFFECTS (APE)



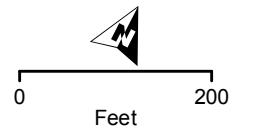
BACKGROUND SOURCE: ESRI, DIGITALGLOBE, GEOEYE, EARTHSTAR GEOGRAPHICS, CNES/AIRBUS DS, USDA, USGS, AEX, GETMAPPING, AEROGRIID, IGN, IGP, SWISSTOPO, AND THE GIS USER COMMUNITY





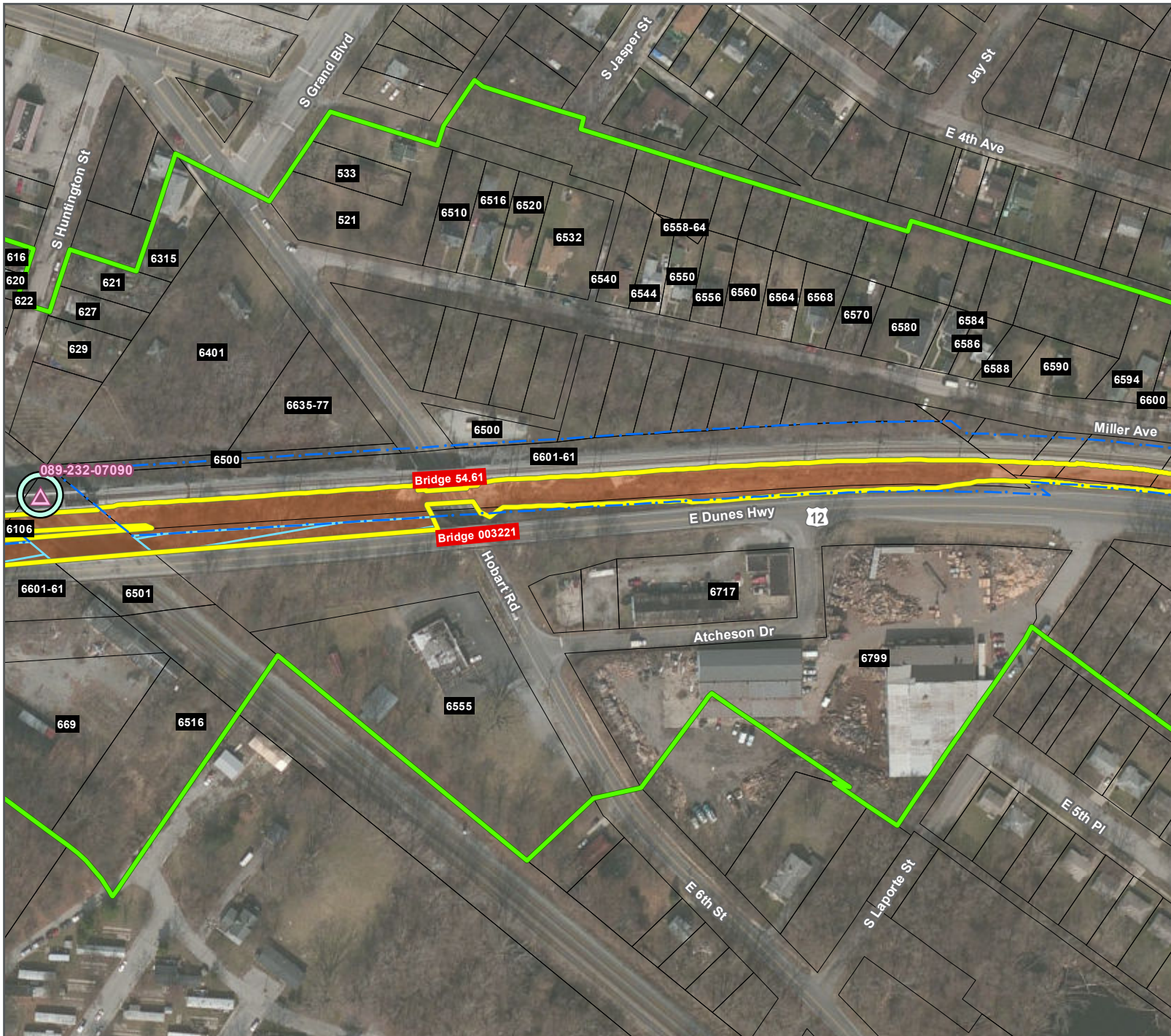
- Proposed Construction Footprint - 3/23/2017
- Anticipated Acquisition
- Proposed Direct Effects APE - 4/12/2017
- Proposed Indirect Effects APE - 4/12/2017
- Current Railroad Right-of-Way
- Milepost
- NICTD Station
- National Register of Historic Places Historic Property
- Indiana Historic Sites and Structures Inventory Surveyed Historic Resource – Outstanding
- Indiana Historic Sites and Structures Inventory Surveyed Historic Resource – Noteworthy
- Indiana Historic Sites and Structures Inventory Surveyed Historic Resource – Contributing
- Swedish Farmstead
- Not Extant
- National Register of Historic Places Historic District
- Indiana Dunes National Lakeshore
- Indiana Dunes State Park
- Parcel Boundary
- Surveyed
- Not Surveyed Due to Age

### AREA OF POTENTIAL EFFECTS (APE)



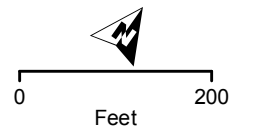
BACKGROUND SOURCE: ESRI, DIGITALGLOBE, GEOEYE, EARTHSTAR GEOGRAPHICS, CNES/AIRBUS DS, USDA, USGS, AEX, GETMAPPING, AEROGRID, IGN, IGP, SWISSTOPO, AND THE GIS USER COMMUNITY





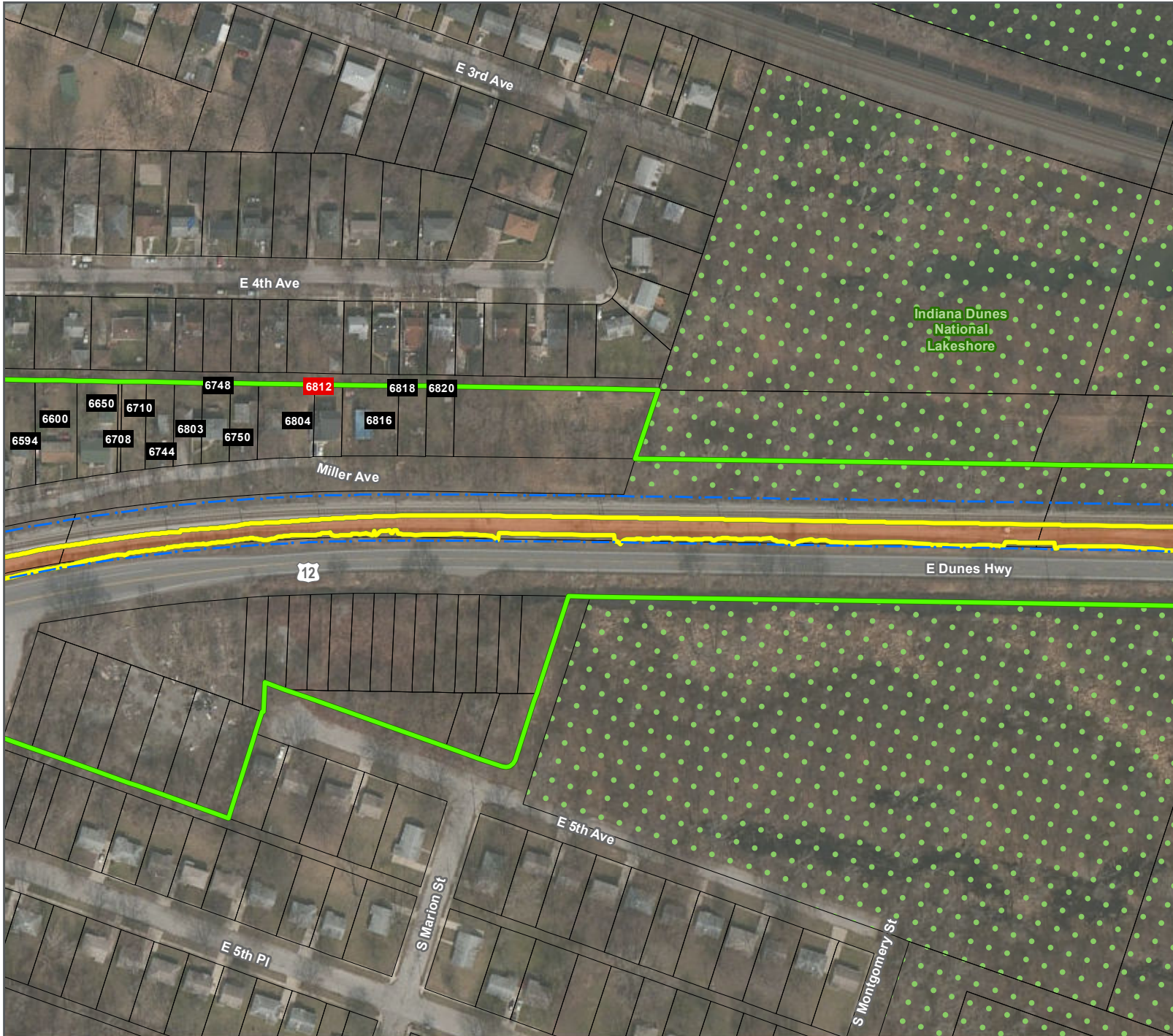
- Proposed Construction Footprint - 3/23/2017
- Anticipated Acquisition
- Proposed Direct Effects APE - 4/12/2017
- Proposed Indirect Effects APE - 4/12/2017
- Current Railroad Right-of-Way
- Milepost
- NICTD Station
- National Register of Historic Places Historic Property
- Indiana Historic Sites and Structures Inventory Surveyed Historic Resource – Outstanding
- Indiana Historic Sites and Structures Inventory Surveyed Historic Resource – Noteworthy
- Indiana Historic Sites and Structures Inventory Surveyed Historic Resource – Contributing
- Swedish Farmstead
- Not Extant
- National Register of Historic Places Historic District
- Indiana Dunes National Lakeshore
- Indiana Dunes State Park
- Parcel Boundary
- Surveyed
- Not Surveyed Due to Age

## AREA OF POTENTIAL EFFECTS (APE)



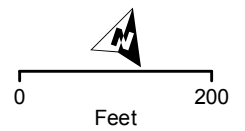
BACKGROUND SOURCE: ESRI, DIGITALGLOBE, GEOEYE, EARTHSTAR GEOGRAPHICS, CNES/AIRBUS DS, USDA, USGS, AEX, GETMAPPING, AEROGRIID, IGN, IGP, SWISSTOPO, AND THE GIS USER COMMUNITY





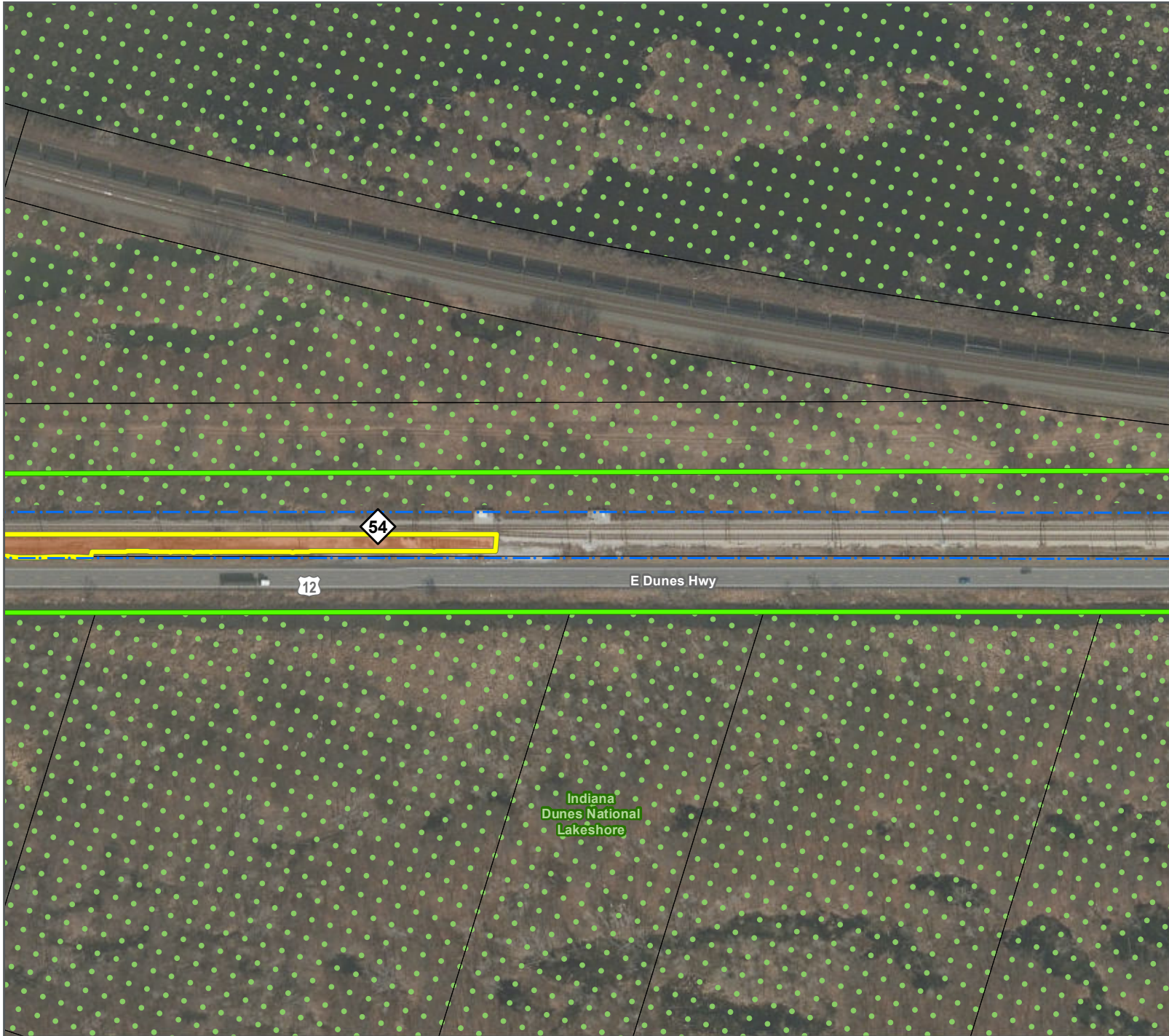
- Proposed Construction Footprint - 3/23/2017
- Anticipated Acquisition
- Proposed Direct Effects APE - 4/12/2017
- Proposed Indirect Effects APE - 4/12/2017
- Current Railroad Right-of-Way
- Milepost
- NICTD Station
- National Register of Historic Places Historic Property
- Indiana Historic Sites and Structures Inventory Surveyed Historic Resource – Outstanding
- Indiana Historic Sites and Structures Inventory Surveyed Historic Resource – Noteworthy
- Indiana Historic Sites and Structures Inventory Surveyed Historic Resource – Contributing
- Swedish Farmstead
- Not Extant
- National Register of Historic Places Historic District
- Indiana Dunes National Lakeshore
- Indiana Dunes State Park
- Parcel Boundary
- # Surveyed
- # Not Surveyed Due to Age

### AREA OF POTENTIAL EFFECTS (APE)



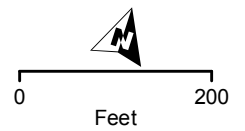
BACKGROUND SOURCE: ESRI, DIGITALGLOBE, GEOEYE, EARTHSTAR GEOGRAPHICS, CNES/AIRBUS DS, USDA, USGS, AEX, GETMAPPING, AEROGRIID, IGN, IGP, SWISSTOPO, AND THE GIS USER COMMUNITY





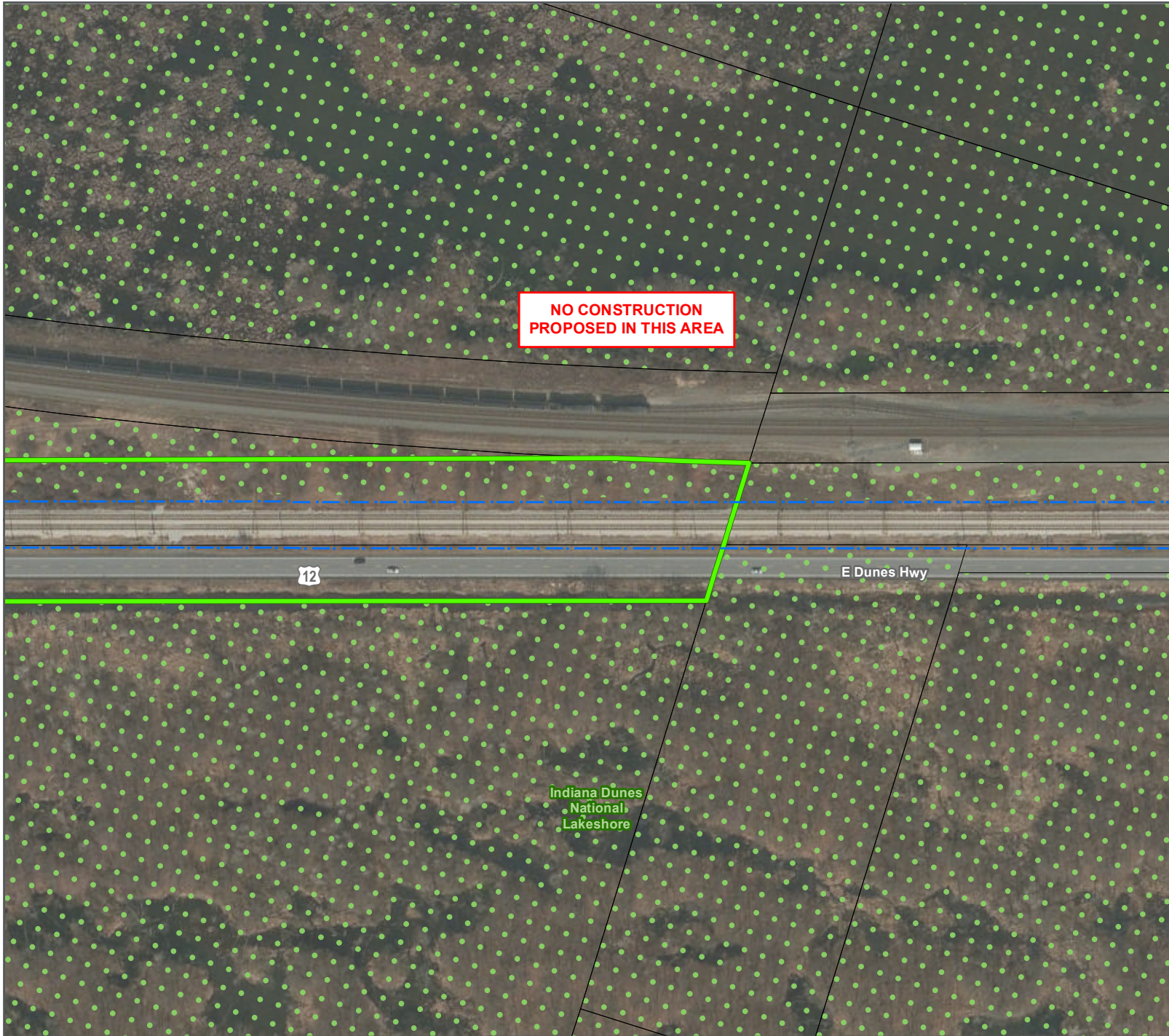
- Proposed Construction Footprint - 3/23/2017
- Anticipated Acquisition
- Proposed Direct Effects APE - 4/12/2017
- Proposed Indirect Effects APE - 4/12/2017
- Current Railroad Right-of-Way
- Milepost
- NICTD Station
- National Register of Historic Places Historic Property
- Indiana Historic Sites and Structures Inventory Surveyed Historic Resource – Outstanding
- Indiana Historic Sites and Structures Inventory Surveyed Historic Resource – Noteworthy
- Indiana Historic Sites and Structures Inventory Surveyed Historic Resource – Contributing
- Swedish Farmstead
- Not Extant
- National Register of Historic Places Historic District
- Indiana Dunes National Lakeshore
- Indiana Dunes State Park
- Parcel Boundary
- Surveyed
- Not Surveyed Due to Age

### AREA OF POTENTIAL EFFECTS (APE)



BACKGROUND SOURCE: ESRI, DIGITALGLOBE, GEOEYE, EARTHSTAR GEOGRAPHICS, CNES/AIRBUS DS, USDA, USGS, AEX, GETMAPPING, AEROGRIID, IGP, IGP, SWISSTOPO, AND THE GIS USER COMMUNITY





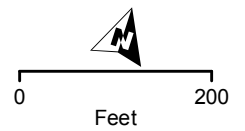
**NO CONSTRUCTION  
PROPOSED IN THIS AREA**

Indiana Dunes  
National  
Lakeshore



- Proposed Construction Footprint - 3/23/2017
- Anticipated Acquisition
- Proposed Direct Effects APE - 4/12/2017
- Proposed Indirect Effects APE - 4/12/2017
- Current Railroad Right-of-Way
- Milepost
- NICTD Station
- National Register of Historic Places  
Historic Property
- Indiana Historic Sites and Structures Inventory  
Surveyed Historic Resource – Outstanding
- Indiana Historic Sites and Structures Inventory  
Surveyed Historic Resource – Noteworthy
- Indiana Historic Sites and Structures Inventory  
Surveyed Historic Resource – Contributing
- Swedish Farmstead
- Not Extant
- National Register of Historic Places  
Historic District
- Indiana Dunes National Lakeshore
- Indiana Dunes State Park
- Parcel Boundary
- Surveyed
- Not Surveyed Due to Age

**AREA OF POTENTIAL  
EFFECTS (APE)**



**SHEET 18 OF 92**



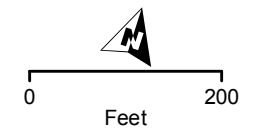


**NO CONSTRUCTION  
PROPOSED IN THIS AREA**



- Proposed Construction Footprint - 3/23/2017
- Anticipated Acquisition
- Proposed Direct Effects APE - 4/12/2017
- Proposed Indirect Effects APE - 4/12/2017
- Current Railroad Right-of-Way
- Milepost
- NICTD Station
- National Register of Historic Places Historic Property
- Indiana Historic Sites and Structures Inventory Surveyed Historic Resource – Outstanding
- Indiana Historic Sites and Structures Inventory Surveyed Historic Resource – Noteworthy
- Indiana Historic Sites and Structures Inventory Surveyed Historic Resource – Contributing
- Swedish Farmstead
- Not Extant
- National Register of Historic Places Historic District
- Indiana Dunes National Lakeshore
- Indiana Dunes State Park
- Parcel Boundary
- Surveyed
- Not Surveyed Due to Age

**AREA OF POTENTIAL EFFECTS (APE)**



**SHEET 19 OF 92**

BACKGROUND SOURCE: ESRI, DIGITALGLOBE, GEOEYE, EARTHSTAR GEOGRAPHICS, CNES/AIRBUS DS, USDA, USGS, AEX, GETMAPPING, AEROGRIID, IGP, SWISSTOPO, AND THE GIS USER COMMUNITY



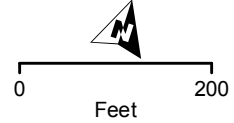


**NO CONSTRUCTION  
PROPOSED IN THIS AREA**



-  Proposed Construction Footprint - 3/23/2017
-  Anticipated Acquisition
-  Proposed Direct Effects APE - 4/12/2017
-  Proposed Indirect Effects APE - 4/12/2017
-  Current Railroad Right-of-Way
-  Milepost
-  NICTD Station
-  National Register of Historic Places  
Historic Property
-  Indiana Historic Sites and Structures Inventory  
Surveyed Historic Resource – Outstanding
-  Indiana Historic Sites and Structures Inventory  
Surveyed Historic Resource – Noteworthy
-  Indiana Historic Sites and Structures Inventory  
Surveyed Historic Resource – Contributing
-  Swedish Farmstead
-  Not Extant
-  National Register of Historic Places  
Historic District
-  Indiana Dunes National Lakeshore
-  Indiana Dunes State Park
-  Parcel Boundary
-  Surveyed
-  Not Surveyed Due to Age

**AREA OF POTENTIAL  
EFFECTS (APE)**







SHEET 20 OF 92

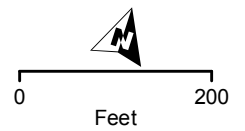
BACKGROUND SOURCE: ESRI, DIGITALGLOBE, GEOEYE, EARTHSTAR GEOGRAPHICS, CNES/AIRBUS DS, USDA, USGS, AEX, GETMAPPING, AEROGRIID, IGN, IGP, SWISSTOPO, AND THE GIS USER COMMUNITY





- Proposed Construction Footprint - 3/23/2017
- Anticipated Acquisition
- Proposed Direct Effects APE - 4/12/2017
- Proposed Indirect Effects APE - 4/12/2017
- Current Railroad Right-of-Way
- Milepost
- NICTD Station
- National Register of Historic Places Historic Property
- Indiana Historic Sites and Structures Inventory Surveyed Historic Resource – Outstanding
- Indiana Historic Sites and Structures Inventory Surveyed Historic Resource – Noteworthy
- Indiana Historic Sites and Structures Inventory Surveyed Historic Resource – Contributing
- Swedish Farmstead
- Not Extant
- National Register of Historic Places Historic District
- Indiana Dunes National Lakeshore
- Indiana Dunes State Park
- Parcel Boundary
- Surveyed
- Not Surveyed Due to Age

**AREA OF POTENTIAL EFFECTS (APE)**






BACKGROUND SOURCE: ESRI, DIGITALGLOBE, GEOEYE, EARTHSTAR GEOGRAPHICS, CNES/AIRBUS DS, USDA, USGS, AEX, GETMAPPING, AEROGRIID, IGN, IGP, SWISSTOPO, AND THE GIS USER COMMUNITY



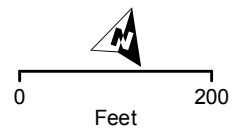


**NO CONSTRUCTION  
PROPOSED IN THIS AREA**



-  Proposed Construction Footprint - 3/23/2017
-  Anticipated Acquisition
-  Proposed Direct Effects APE - 4/12/2017
-  Proposed Indirect Effects APE - 4/12/2017
-  Current Railroad Right-of-Way
-  Milepost
-  NICTD Station
-  National Register of Historic Places  
Historic Property
-  Indiana Historic Sites and Structures Inventory  
Surveyed Historic Resource – Outstanding
-  Indiana Historic Sites and Structures Inventory  
Surveyed Historic Resource – Noteworthy
-  Indiana Historic Sites and Structures Inventory  
Surveyed Historic Resource – Contributing
-  Swedish Farmstead
-  Not Extant
-  National Register of Historic Places  
Historic District
-  Indiana Dunes National Lakeshore
-  Indiana Dunes State Park
-  Parcel Boundary
-  Surveyed
-  Not Surveyed Due to Age

**AREA OF POTENTIAL  
EFFECTS (APE)**



BACKGROUND SOURCE: ESRI, DIGITALGLOBE, GEOEYE, EARTHSTAR GEOGRAPHICS, CNES/AIRBUS DS, USDA, USGS, AEX, GETMAPPING, AEROGRIID, IGN, IGP, SWISSTOPO, AND THE GIS USER COMMUNITY