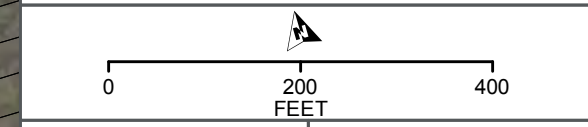


- Proposed Construction Footprint - 10/31/2016
- Proposed Direct Effects APE
- Proposed Indirect Effects APE
- Railroad Right-of-Way
- Milepost
- NICTD Station
- Proposed New NICTD Bridge
- Proposed Crossing Closure
- Proposed Station Parking
- Anticipated Property Take
- National Register of Historic Places Historic Property
- Indiana Historic Sites and Structures Inventory Surveyed Historic Resource – Outstanding
- Indiana Historic Sites and Structures Inventory Surveyed Historic Resource – Noteworthy
- Indiana Historic Sites and Structures Inventory Surveyed Historic Resource – Contributing
- Swedish Farmstead
- National Register of Historic Places Historic District
- Indiana Dunes National Lakeshore
- Indiana Dunes State Park
- Parcel Boundary

**CULTURAL RESOURCES
PROPOSED AREA OF
POTENTIAL EFFECTS (APE)
12/15/2016**

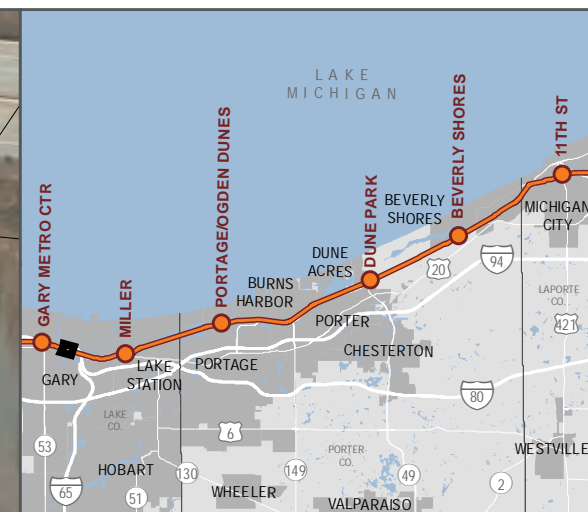
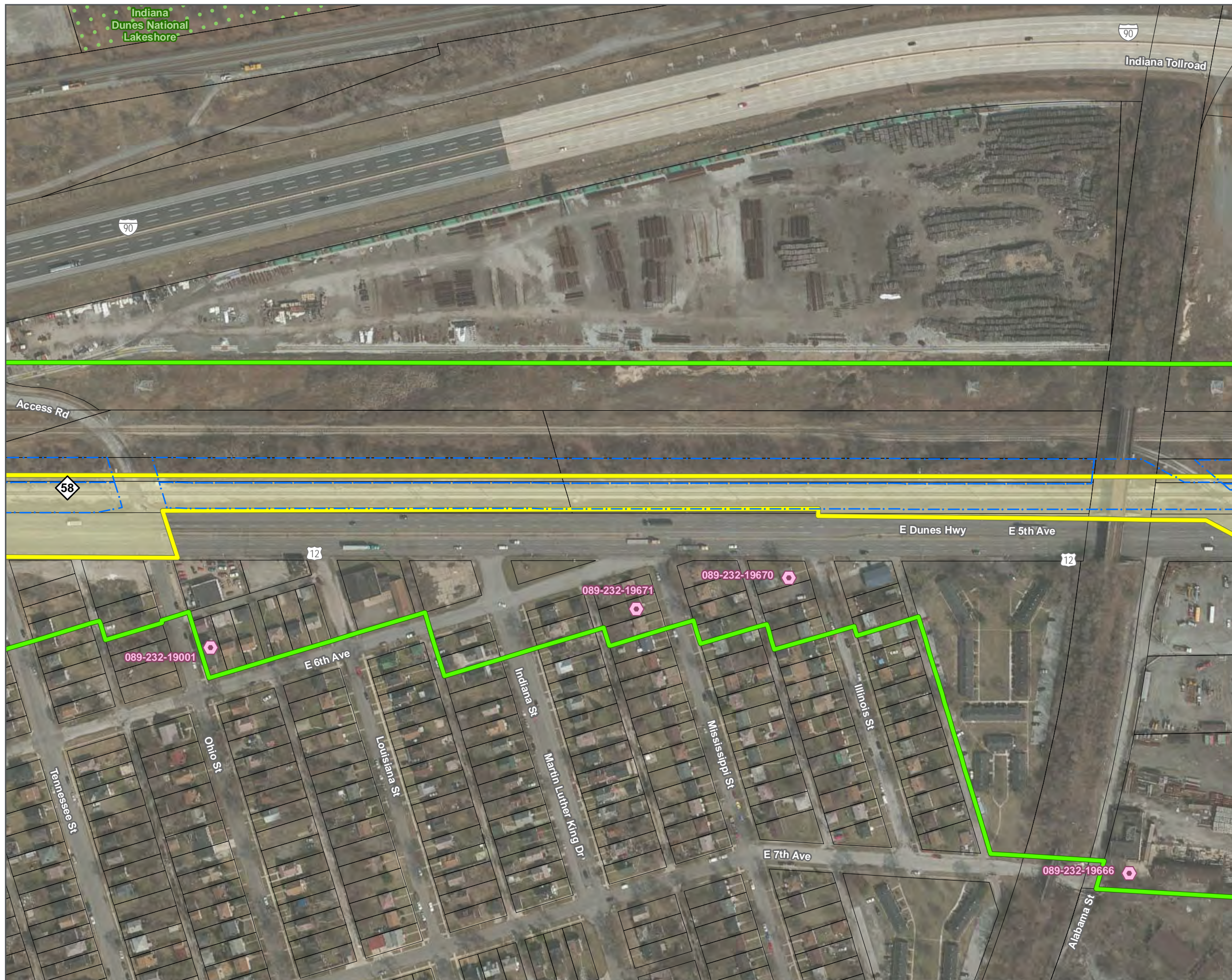






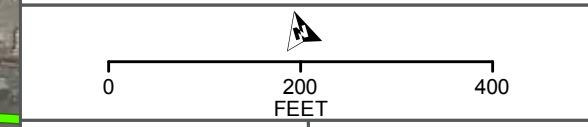
SHEET 1 OF 57

DATA SOURCES: Environmental Systems Research Institute, Indiana Historic Sites and Structures Inventory, National Resource Commission, Northern Indiana Commuter Transportation District, U.S. National Park Service, U.S. Census Bureau, U.S. Geological Survey, U.S. Department of the Interior, U.S. Fish & Wildlife Service
 BACKGROUND SOURCE: ESRI, DIGITALGLOBE, GEOEYE, EARTHSTAR GEOGRAPHICS, CNES/AIRBUS DS, USDA, USGS, AEX, GETMAPPING, AEROGRIID, IGN, IGP, SWISSTOPO, AND THE GIS USER COMMUNITY



- Proposed Construction Footprint - 10/31/2016
- Proposed Direct Effects APE
- Proposed Indirect Effects APE
- Railroad Right-of-Way
- Milepost
- NICTD Station
- Proposed New NICTD Bridge
- Proposed Crossing Closure
- Proposed Station Parking
- Anticipated Property Take
- National Register of Historic Places Historic Property
- Indiana Historic Sites and Structures Inventory Surveyed Historic Resource – Outstanding
- Indiana Historic Sites and Structures Inventory Surveyed Historic Resource – Noteworthy
- Indiana Historic Sites and Structures Inventory Surveyed Historic Resource – Contributing
- Swedish Farmstead
- National Register of Historic Places Historic District
- Indiana Dunes National Lakeshore
- Indiana Dunes State Park
- Parcel Boundary

**CULTURAL RESOURCES
PROPOSED AREA OF
POTENTIAL EFFECTS (APE)
12/15/2016**



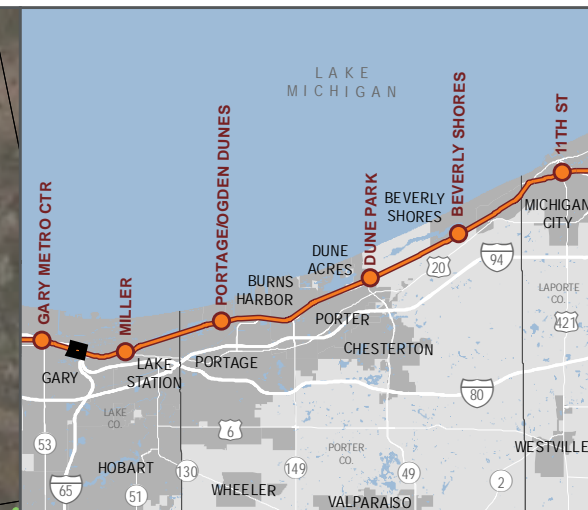
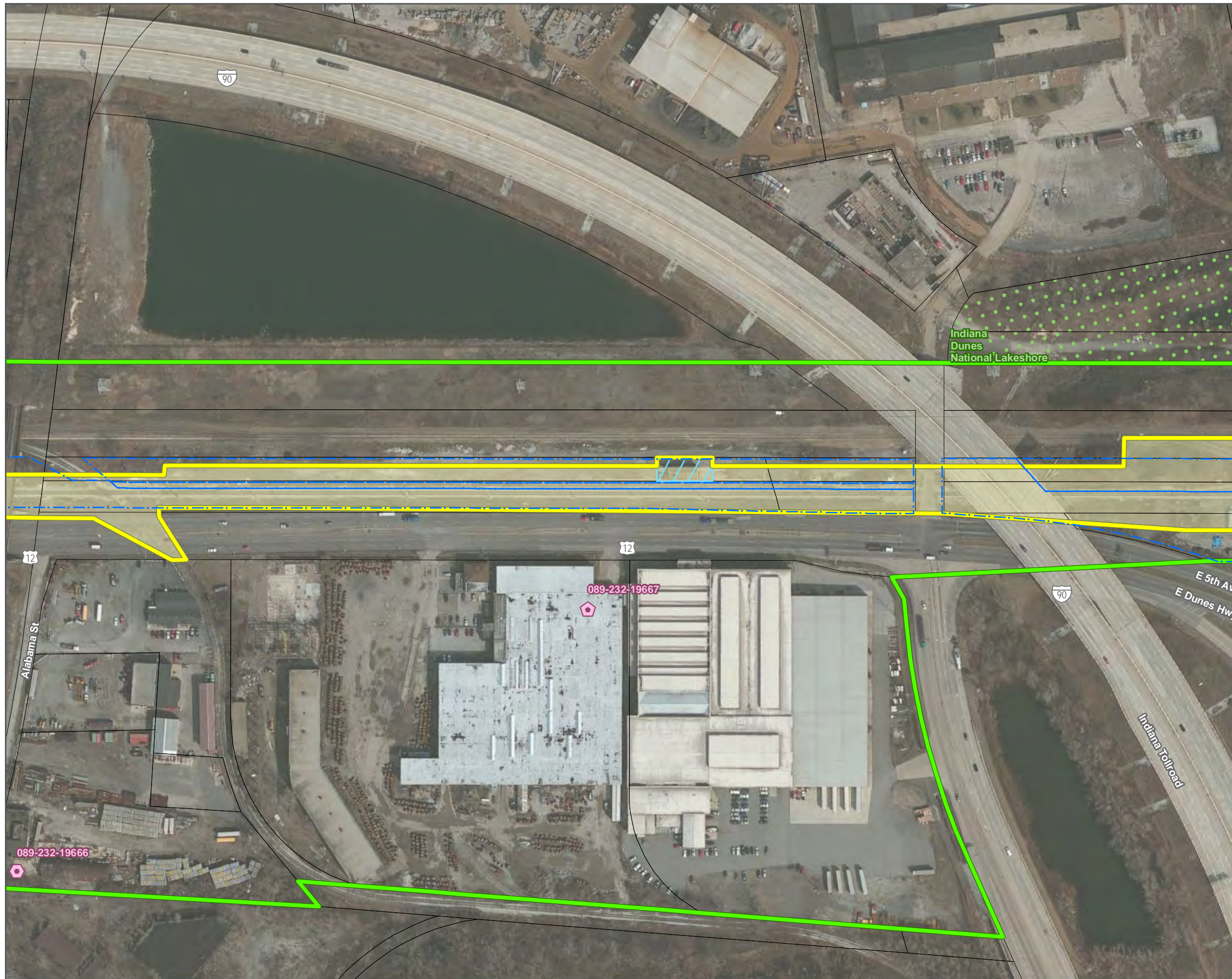


Connectivity for Accelerated Growth



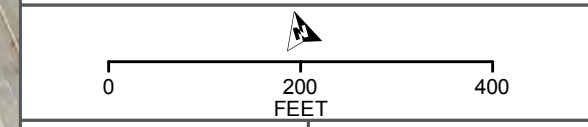
SHEET 2 OF 57

DATA SOURCES: Environmental Systems Research Institute, Indiana Historic Sites and Structures Inventory, National Resource Commission, Northern Indiana Commuter Transportation District, U.S. National Park Service, U.S. Census Bureau, U.S. Geological Survey, U.S. Department of the Interior, U.S. Fish & Wildlife Service
BACKGROUND SOURCE: ESRI, DIGITALGLOBE, GEOEYE, EARTHSTAR GEOGRAPHICS, CNES/AIRBUS DS, USDA, USGS, AEX, GETMAPPING, AEROGRIID, IGN, IGP, SWISSTOPO, AND THE GIS USER COMMUNITY



- Proposed Construction Footprint - 10/31/2016
- Proposed Direct Effects APE
- Proposed Indirect Effects APE
- Railroad Right-of-Way
- Milepost
- NICTD Station
- Proposed New NICTD Bridge
- Proposed Crossing Closure
- Proposed Station Parking
- Anticipated Property Take
- National Register of Historic Places Historic Property
- Indiana Historic Sites and Structures Inventory Surveyed Historic Resource – Outstanding
- Indiana Historic Sites and Structures Inventory Surveyed Historic Resource – Noteworthy
- Indiana Historic Sites and Structures Inventory Surveyed Historic Resource – Contributing
- Swedish Farmstead
- National Register of Historic Places Historic District
- Indiana Dunes National Lakeshore
- Indiana Dunes State Park
- Parcel Boundary

**CULTURAL RESOURCES
PROPOSED AREA OF
POTENTIAL EFFECTS (APE)
12/15/2016**

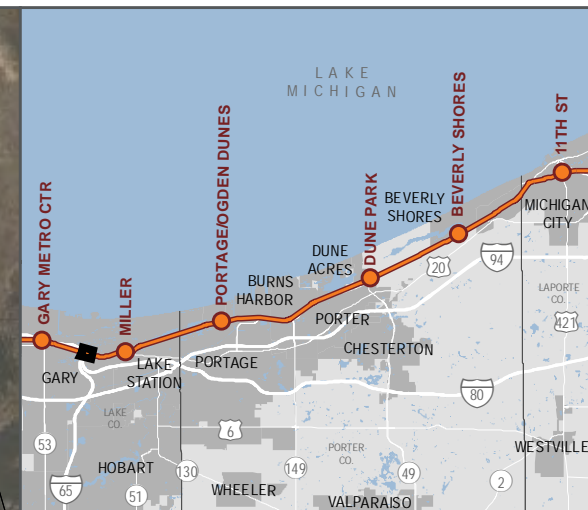
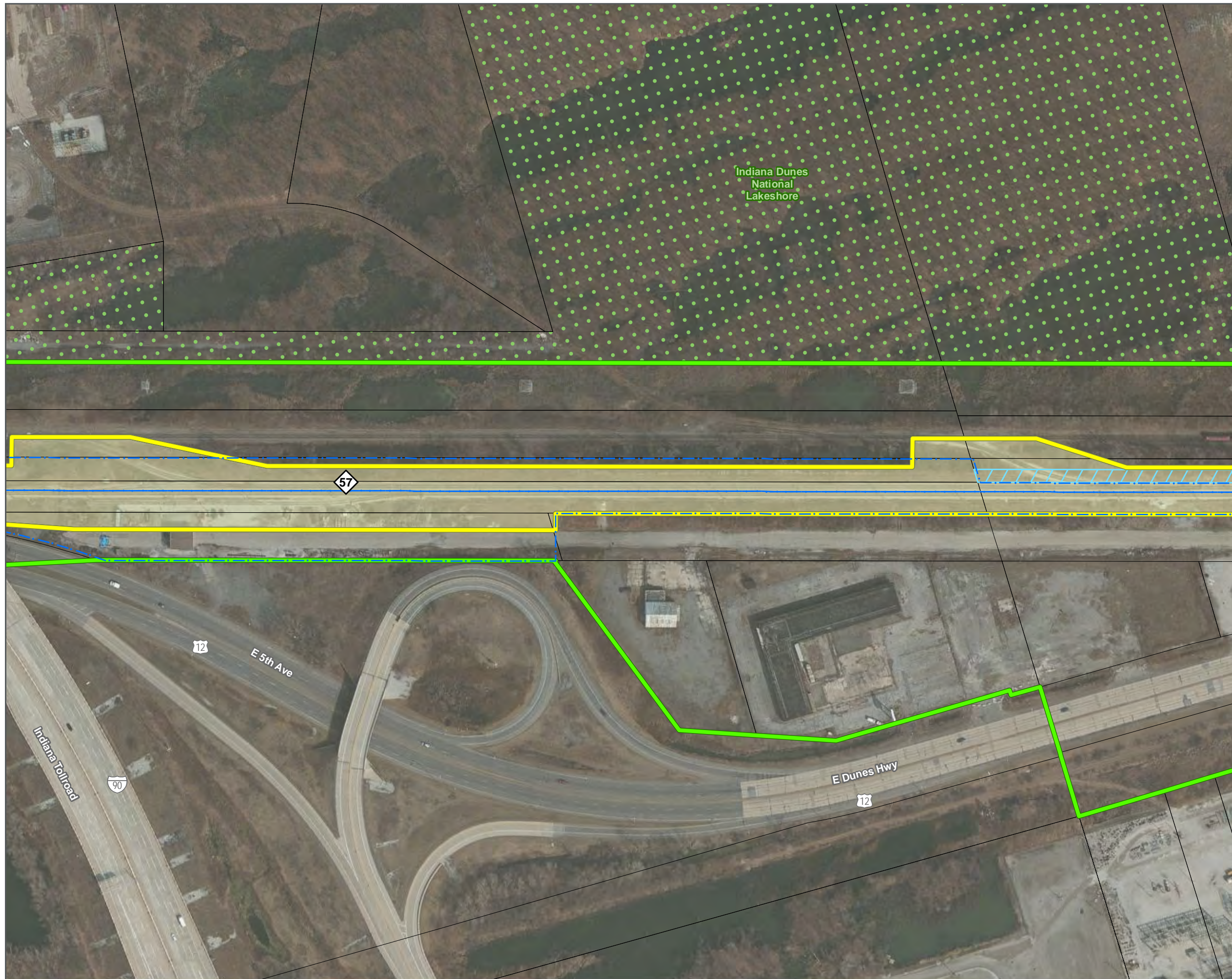






SHEET 3 OF 57

DATA SOURCES: Environmental Systems Research Institute, Indiana Historic Sites and Structures Inventory, National Resource Commission, Northern Indiana Commuter Transportation District, U.S. National Park Service, U.S. Census Bureau, U.S. Geological Survey, U.S. Department of the Interior, U.S. Fish & Wildlife Service
 BACKGROUND SOURCE: ESRI, DIGITALGLOBE, GEOEYE, EARTHSTAR GEOGRAPHICS, CNES/AIRBUS DS, USDA, USGS, AEX, GETMAPPING, AEROGRIID, IGN, IGP, SWISSTOPO, AND THE GIS USER COMMUNITY



- Proposed Construction Footprint - 10/31/2016
- Proposed Direct Effects APE
- Proposed Indirect Effects APE
- Railroad Right-of-Way
- Milepost
- NICTD Station
- Proposed New NICTD Bridge
- Proposed Crossing Closure
- Proposed Station Parking
- Anticipated Property Take
- National Register of Historic Places
Historic Property
- Indiana Historic Sites and Structures Inventory
Surveyed Historic Resource – Outstanding
- Indiana Historic Sites and Structures Inventory
Surveyed Historic Resource – Noteworthy
- Indiana Historic Sites and Structures Inventory
Surveyed Historic Resource – Contributing
- Swedish Farmstead
- National Register of Historic Places
Historic District
- Indiana Dunes National Lakeshore
- Indiana Dunes State Park
- Parcel Boundary

**CULTURAL RESOURCES
PROPOSED AREA OF
POTENTIAL EFFECTS (APE)
12/15/2016**

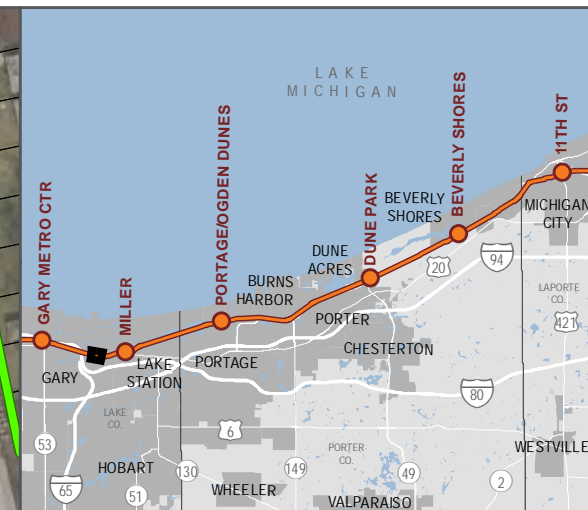






SHEET 4 OF 57

DATA SOURCES: Environmental Systems Research Institute, Indiana Historic Sites and Structures Inventory, National Resource Commission, Northern Indiana Commuter Transportation District, U.S. National Park Service, U.S. Census Bureau, U.S. Geological Survey, U.S. Department of the Interior, U.S. Fish & Wildlife Service
BACKGROUND SOURCE: ESRI, DIGITALGLOBE, GEOEYE, EARTHSTAR GEOGRAPHICS, CNESAIRBUS DS, USDA, USGS, AEX, GETMAPPING, AEROGRIID, IGN, IGP, SWISSTOPO, AND THE GIS USER COMMUNITY



- Proposed Construction Footprint - 10/31/2016
- Proposed Direct Effects APE
- Proposed Indirect Effects APE
- Railroad Right-of-Way
- Milepost
- NICTD Station
- Proposed New NICTD Bridge
- Proposed Crossing Closure
- Proposed Station Parking
- Anticipated Property Take
- National Register of Historic Places
Historic Property
- Indiana Historic Sites and Structures Inventory
Surveyed Historic Resource – Outstanding
- Indiana Historic Sites and Structures Inventory
Surveyed Historic Resource – Noteworthy
- Indiana Historic Sites and Structures Inventory
Surveyed Historic Resource – Contributing
- Swedish Farmstead
- National Register of Historic Places
Historic District
- Indiana Dunes National Lakeshore
- Indiana Dunes State Park
- Parcel Boundary

**CULTURAL RESOURCES
PROPOSED AREA OF
POTENTIAL EFFECTS (APE)
12/15/2016**

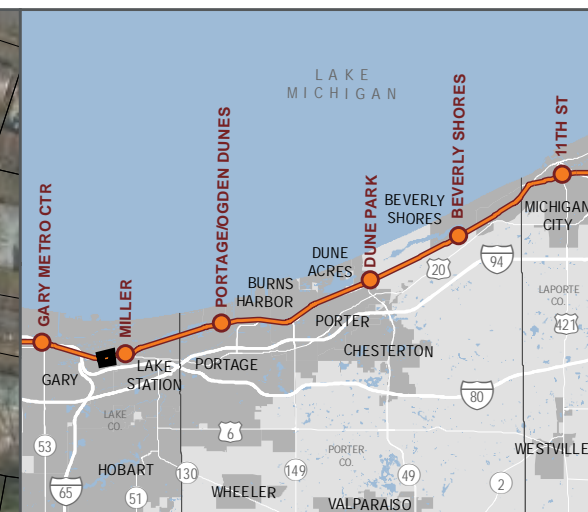






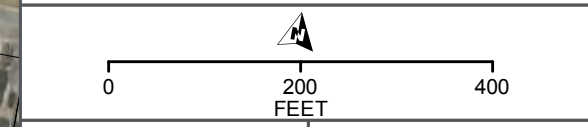
SHEET 5 OF 57

DATA SOURCES: Environmental Systems Research Institute, Indiana Historic Sites and Structures Inventory, National Resource Commission, Northern Indiana Commuter Transportation District, U.S. National Park Service, U.S. Census Bureau, U.S. Geological Survey, U.S. Department of the Interior, U.S. Fish & Wildlife Service
BACKGROUND SOURCE: ESRI, DIGITALGLOBE, GEOEYE, EARTHSTAR GEOGRAPHICS, CNES/AIRBUS DS, USDA, USGS, AEX, GETMAPPING, AEROGRIID, IGN, IGP, SWISSTOPO, AND THE GIS USER COMMUNITY



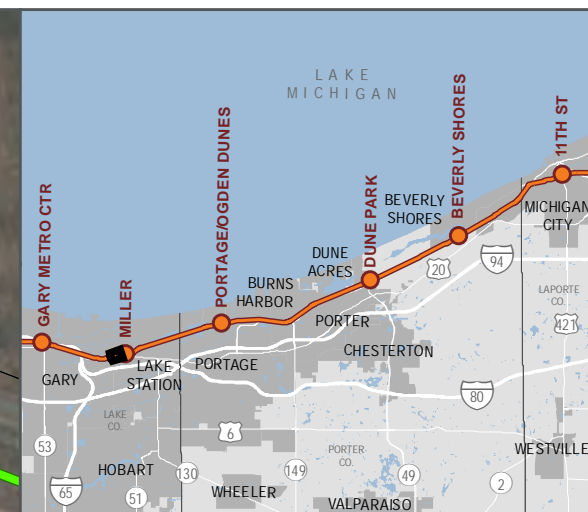
- Proposed Construction Footprint - 10/31/2016
- Proposed Direct Effects APE
- Proposed Indirect Effects APE
- Railroad Right-of-Way
- Milepost
- NICTD Station
- Proposed New NICTD Bridge
- Proposed Crossing Closure
- Proposed Station Parking
- Anticipated Property Take
- National Register of Historic Places
Historic Property
- Indiana Historic Sites and Structures Inventory
Surveyed Historic Resource – Outstanding
- Indiana Historic Sites and Structures Inventory
Surveyed Historic Resource – Noteworthy
- Indiana Historic Sites and Structures Inventory
Surveyed Historic Resource – Contributing
- Swedish Farmstead
- National Register of Historic Places
Historic District
- Indiana Dunes National Lakeshore
- Indiana Dunes State Park
- Parcel Boundary

**CULTURAL RESOURCES
PROPOSED AREA OF
POTENTIAL EFFECTS (APE)
12/15/2016**



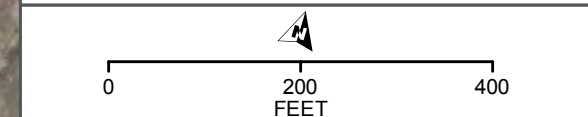
SHEET 6 OF 57

DATA SOURCES: Environmental Systems Research Institute, Indiana Historic Sites and Structures Inventory, National Resource Commission, Northern Indiana Commuter Transportation District, U.S. National Park Service, U.S. Census Bureau, U.S. Geological Survey, U.S. Department of the Interior, U.S. Fish & Wildlife Service
BACKGROUND SOURCE: ESRI, DIGITALGLOBE, GEOEYE, EARTHSTAR GEOGRAPHICS, CNES/AIRBUS DS, USDA, USGS, AEX, GETMAPPING, AEROGRIID, IGN, IGP, SWISSTOPO, AND THE GIS USER COMMUNITY



- Proposed Construction Footprint - 10/31/2016
- Proposed Direct Effects APE
- Proposed Indirect Effects APE
- Railroad Right-of-Way
- Milepost
- NICTD Station
- Proposed New NICTD Bridge
- Proposed Crossing Closure
- Proposed Station Parking
- Anticipated Property Take
- National Register of Historic Places Historic Property
- Indiana Historic Sites and Structures Inventory Surveyed Historic Resource – Outstanding
- Indiana Historic Sites and Structures Inventory Surveyed Historic Resource – Noteworthy
- Indiana Historic Sites and Structures Inventory Surveyed Historic Resource – Contributing
- Swedish Farmstead
- National Register of Historic Places Historic District
- Indiana Dunes National Lakeshore
- Indiana Dunes State Park
- Parcel Boundary

**CULTURAL RESOURCES
PROPOSED AREA OF
POTENTIAL EFFECTS (APE)
12/15/2016**

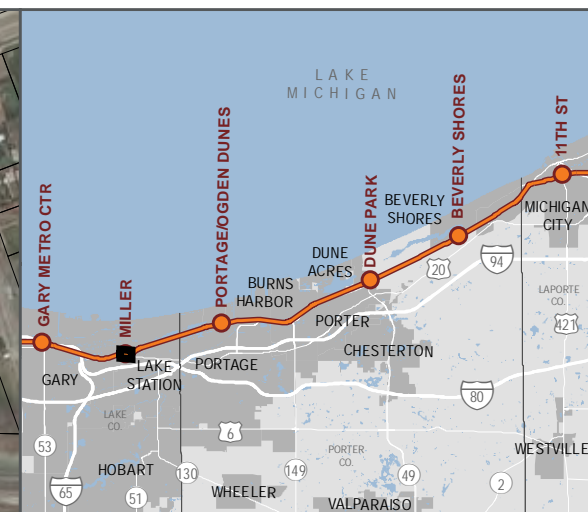
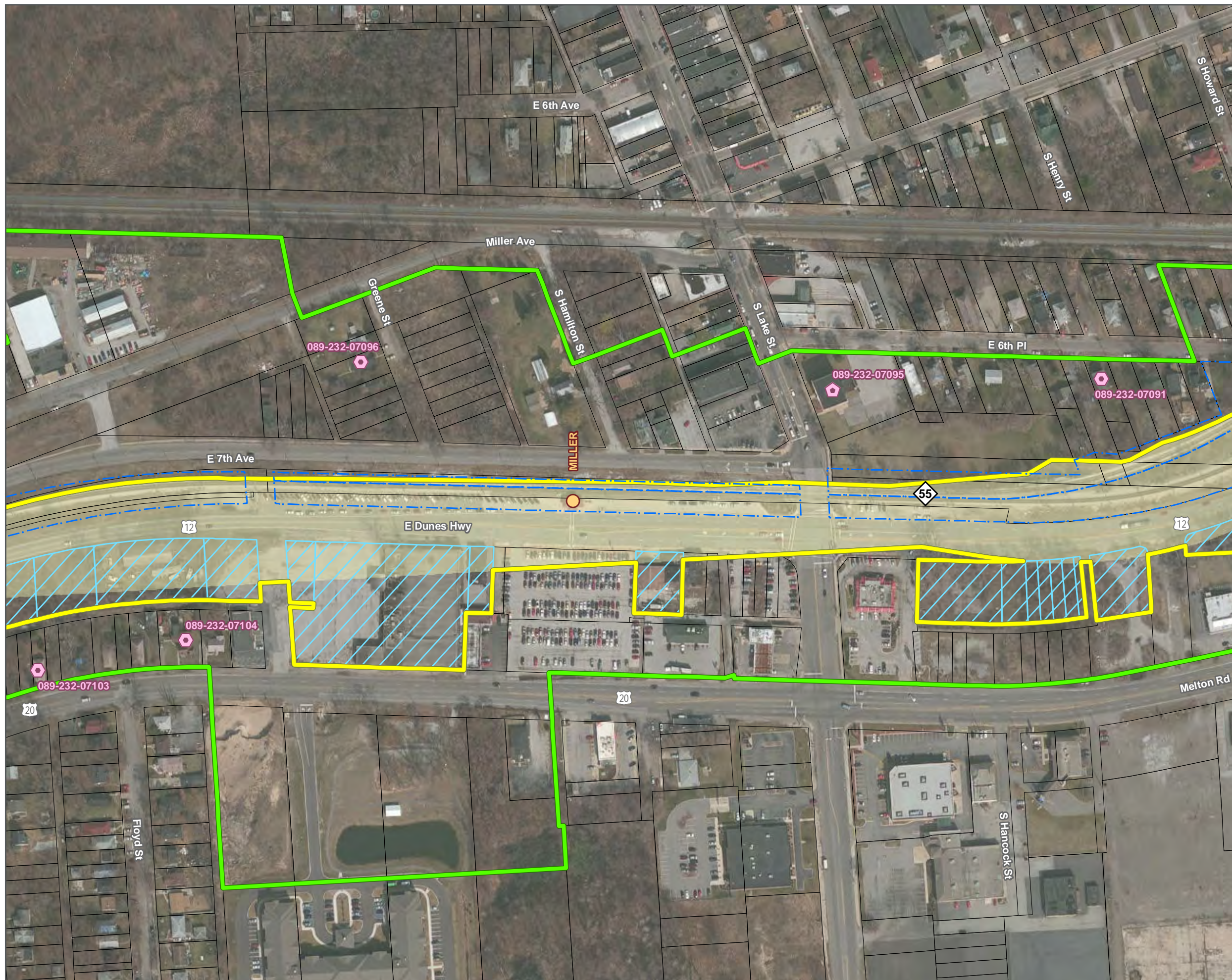






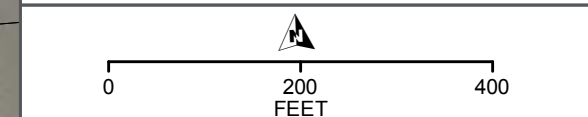
SHEET 7 OF 57

DATA SOURCES: Environmental Systems Research Institute, Indiana Historic Sites and Structures Inventory, National Resource Commission, Northern Indiana Commuter Transportation District, U.S. National Park Service, U.S. Census Bureau, U.S. Geological Survey, U.S. Department of the Interior, U.S. Fish & Wildlife Service
BACKGROUND SOURCE: ESRI, DIGITALGLOBE, GEOEYE, EARTHSTAR GEOGRAPHICS, CNES/AIRBUS DS, USDA, USGS, AEX, GETMAPPING, AEROGRIID, IGN, IGP, SWISSTOPO, AND THE GIS USER COMMUNITY



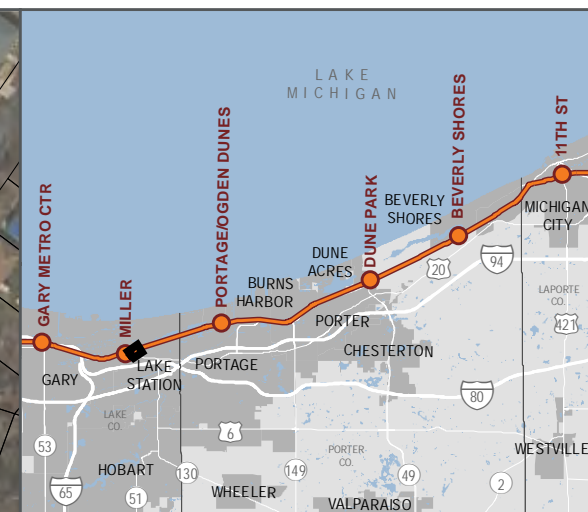
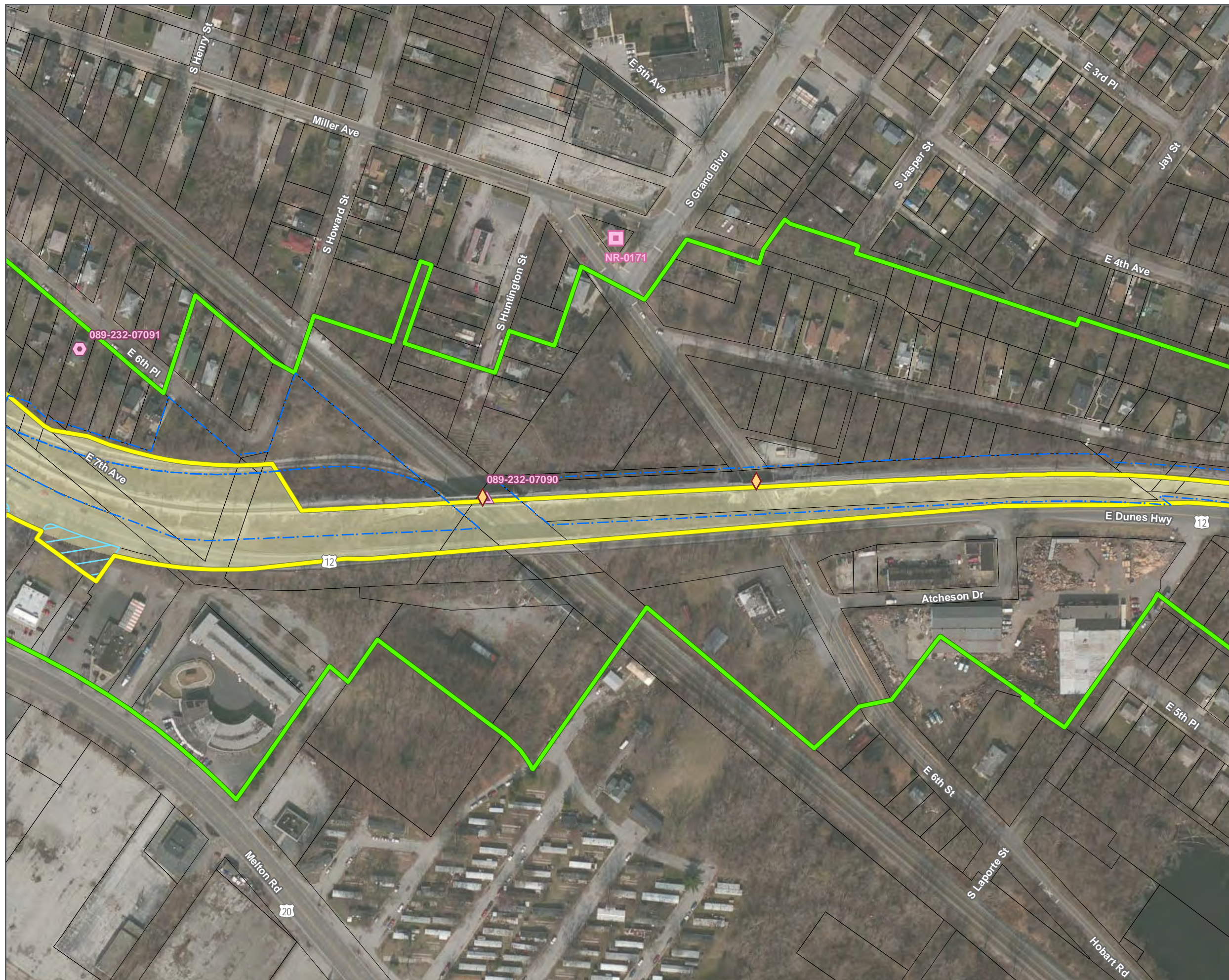
- Proposed Construction Footprint - 10/31/2016
 - Proposed Direct Effects APE
 - Proposed Indirect Effects APE
 - Railroad Right-of-Way
 - Milepost
 - NICTD Station
 - Proposed New NICTD Bridge
 - ✕ Proposed Crossing Closure
 - P Proposed Station Parking
 - Anticipated Property Take
 - National Register of Historic Places Historic Property
 - Indiana Historic Sites and Structures Inventory Surveyed Historic Resource – Outstanding
 - Indiana Historic Sites and Structures Inventory Surveyed Historic Resource – Noteworthy
 - Indiana Historic Sites and Structures Inventory Surveyed Historic Resource – Contributing
 - + Swedish Farmstead
 - National Register of Historic Places Historic District
 - Indiana Dunes National Lakeshore
 - Indiana Dunes State Park
 - Parcel Boundary
- DATA FOR REFERENCE ONLY

**CULTURAL RESOURCES
PROPOSED AREA OF
POTENTIAL EFFECTS (APE)
12/15/2016**



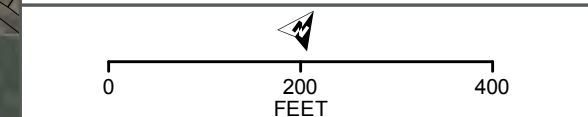
SHEET 8 OF 57

DATA SOURCES: Environmental Systems Research Institute, Indiana Historic Sites and Structures Inventory, National Resource Commission, Northern Indiana Commuter Transportation District, U.S. National Park Service, U.S. Census Bureau, U.S. Geological Survey, U.S. Department of the Interior, U.S. Fish & Wildlife Service
BACKGROUND SOURCE: ESRI, DIGITALGLOBE, GEOEYE, EARTHSTAR GEOGRAPHICS, CNES/AIRBUS DS, USDA, USGS, AEX, GETMAPPING, AEROGRIID, IGN, IGP, SWISSTOPO, AND THE GIS USER COMMUNITY



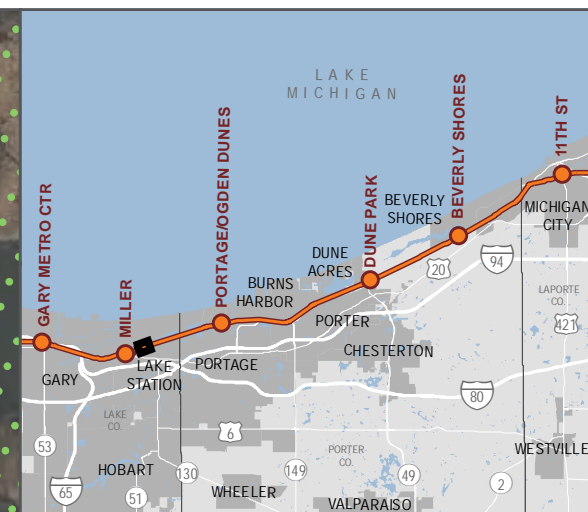
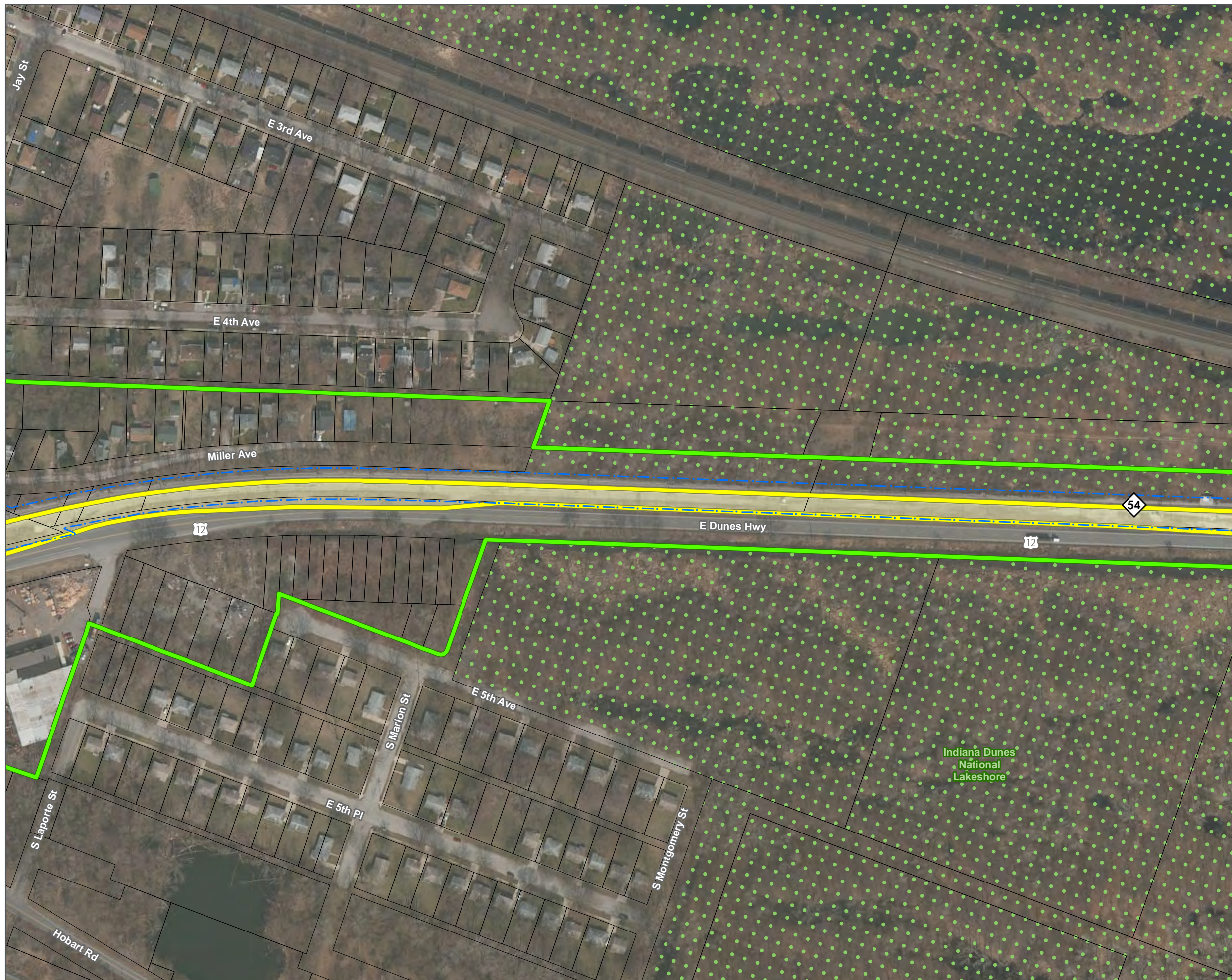
- Proposed Construction Footprint - 10/31/2016
- Proposed Direct Effects APE
- Proposed Indirect Effects APE
- Railroad Right-of-Way
- Milepost
- NICTD Station
- Proposed New NICTD Bridge
- Proposed Crossing Closure
- Proposed Station Parking
- Anticipated Property Take
- National Register of Historic Places Historic Property
- Indiana Historic Sites and Structures Inventory Surveyed Historic Resource – Outstanding
- Indiana Historic Sites and Structures Inventory Surveyed Historic Resource – Noteworthy
- Indiana Historic Sites and Structures Inventory Surveyed Historic Resource – Contributing
- Swedish Farmstead
- National Register of Historic Places Historic District
- Indiana Dunes National Lakeshore
- Indiana Dunes State Park
- Parcel Boundary

**CULTURAL RESOURCES
PROPOSED AREA OF
POTENTIAL EFFECTS (APE)
12/15/2016**



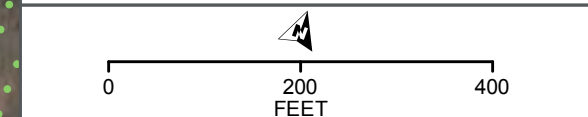
SHEET 9 OF 57


DATA SOURCES: Environmental Systems Research Institute, Indiana Historic Sites and Structures Inventory, National Resource Commission, Northern Indiana Commuter Transportation District, U.S. National Park Service, U.S. Census Bureau, U.S. Geological Survey, U.S. Department of the Interior, U.S. Fish & Wildlife Service
BACKGROUND SOURCE: ESRI, DIGITALGLOBE, GEOEYE, EARTHSTAR GEOGRAPHICS, CNES/AIRBUS DS, USDA, USGS, AEX, GETMAPPING, AEROGRIID, IGN, IGP, SWISSTOPO, AND THE GIS USER COMMUNITY



- Proposed Construction Footprint - 10/31/2016
- Proposed Direct Effects APE
- Proposed Indirect Effects APE
- Railroad Right-of-Way
- Milepost
- NICTD Station
- Proposed New NICTD Bridge
- Proposed Crossing Closure
- Proposed Station Parking
- Anticipated Property Take
- National Register of Historic Places Historic Property
- Indiana Historic Sites and Structures Inventory Surveyed Historic Resource – Outstanding
- Indiana Historic Sites and Structures Inventory Surveyed Historic Resource – Noteworthy
- Indiana Historic Sites and Structures Inventory Surveyed Historic Resource – Contributing
- Swedish Farmstead
- National Register of Historic Places Historic District
- Indiana Dunes National Lakeshore
- Indiana Dunes State Park
- Parcel Boundary

**CULTURAL RESOURCES
PROPOSED AREA OF
POTENTIAL EFFECTS (APE)
12/15/2016**

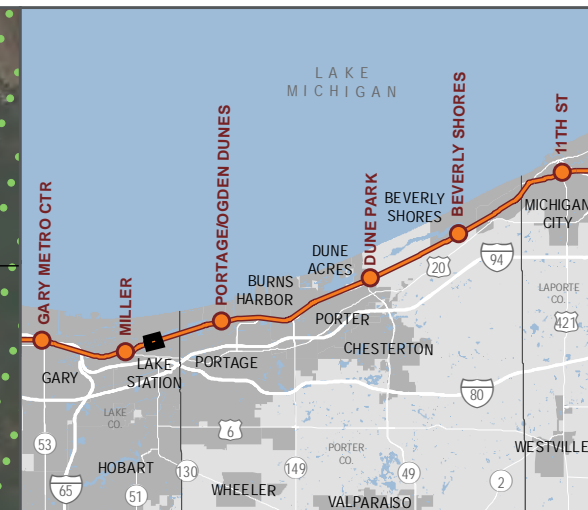
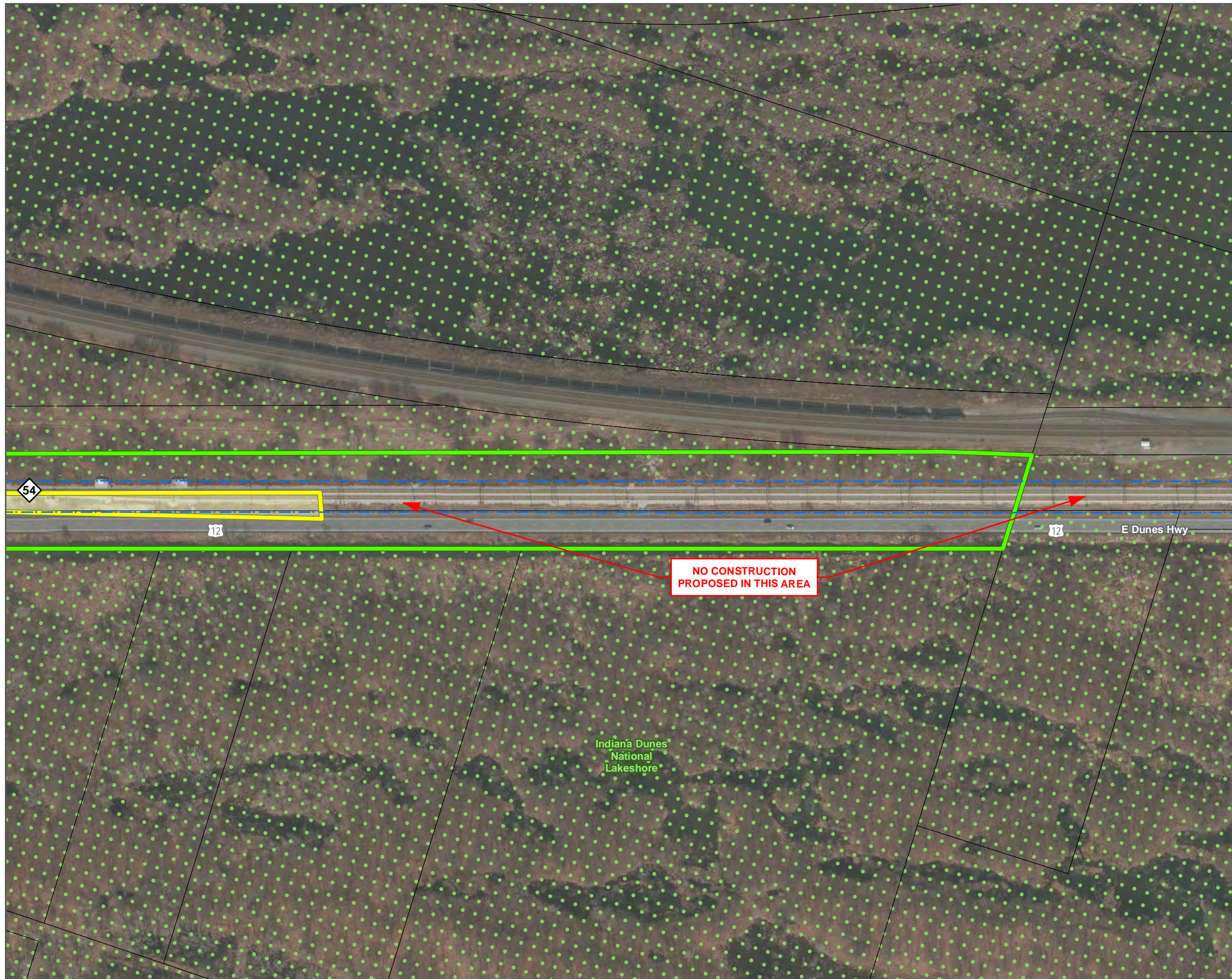






SHEET 10 OF 57

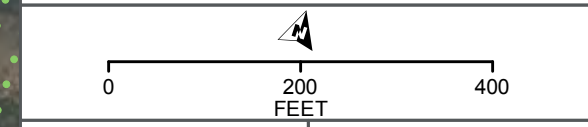
DATA SOURCES: Environmental Systems Research Institute, Indiana Historic Sites and Structures Inventory, National Resource Commission, Northern Indiana Commuter Transportation District, U.S. National Park Service, U.S. Census Bureau, U.S. Geological Survey, U.S. Department of the Interior, U.S. Fish & Wildlife Service
BACKGROUND SOURCE: ESRI, DIGITALGLOBE, GEOEYE, EARTHSTAR GEOGRAPHICS, CNES/AIRBUS DS, USDA, USGS, AEX, GETMAPPING, AEROGRIID, IGN, IGP, SWISSTOPO, AND THE GIS USER COMMUNITY



- Proposed Construction Footprint - 10/31/2016
- Proposed Direct Effects APE
- Proposed Indirect Effects APE
- Railroad Right-of-Way
- Milepost
- NICTD Station
- Proposed New NICTD Bridge
- Proposed Crossing Closure
- Proposed Station Parking
- Anticipated Property Take
- National Register of Historic Places
Historic Property
- Indiana Historic Sites and Structures Inventory
Surveyed Historic Resource – Outstanding
- Indiana Historic Sites and Structures Inventory
Surveyed Historic Resource – Noteworthy
- Indiana Historic Sites and Structures Inventory
Surveyed Historic Resource – Contributing
- Swedish Farmstead
- National Register of Historic Places
Historic District
- Indiana Dunes National Lakeshore
- Indiana Dunes State Park
- Parcel Boundary

NO CONSTRUCTION
PROPOSED IN THIS AREA

**CULTURAL RESOURCES
PROPOSED AREA OF
POTENTIAL EFFECTS (APE)
12/15/2016**



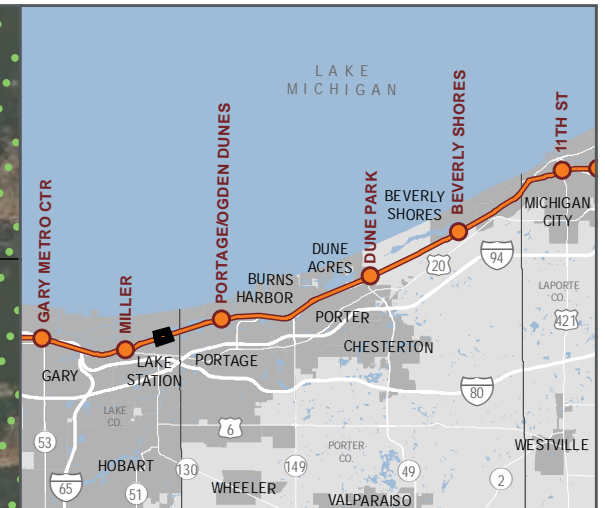




SHEET 11 OF 57

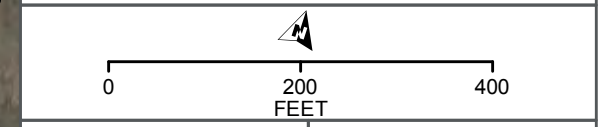
DATA SOURCES: Environmental Systems Research Institute, Indiana Historic Sites and Structures Inventory, National Resource Commission, Northern Indiana Commuter Transportation District, U.S. National Park Service, U.S. Census Bureau, U.S. Geological Survey, U.S. Department of the Interior, U.S. Fish & Wildlife Service
BACKGROUND SOURCE: ESRI, DIGITALGLOBE, GEOEYE, EARTHSTAR GEOGRAPHICS, CNES/AIRBUS DS, USDA, USGS, AEX, GETMAPPING, AEROGRIID, IGN, IGP, SWISSTOPO, AND THE GIS USER COMMUNITY

**NO CONSTRUCTION
PROPOSED IN THIS AREA**



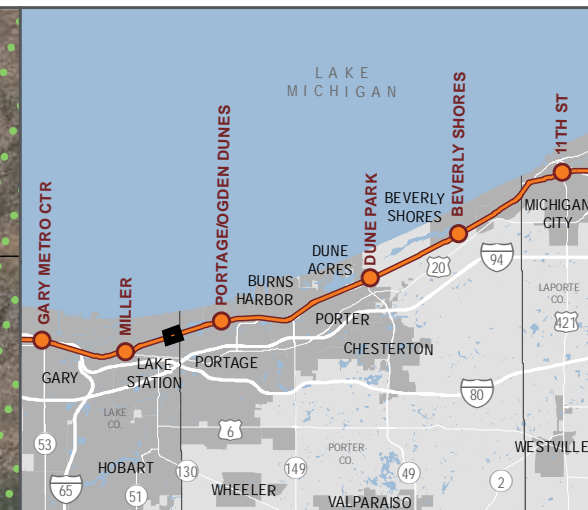
- Proposed Construction Footprint - 10/31/2016
- Proposed Direct Effects APE
- Proposed Indirect Effects APE
- Railroad Right-of-Way
- Milepost
- NICTD Station
- Proposed New NICTD Bridge
- Proposed Crossing Closure
- Proposed Station Parking
- Anticipated Property Take
- National Register of Historic Places
Historic Property
- Indiana Historic Sites and Structures Inventory
Surveyed Historic Resource – Outstanding
- Indiana Historic Sites and Structures Inventory
Surveyed Historic Resource – Noteworthy
- Indiana Historic Sites and Structures Inventory
Surveyed Historic Resource – Contributing
- Swedish Farmstead
- National Register of Historic Places
Historic District
- Indiana Dunes National Lakeshore
- Indiana Dunes State Park
- Parcel Boundary

**CULTURAL RESOURCES
PROPOSED AREA OF
POTENTIAL EFFECTS (APE)
12/15/2016**



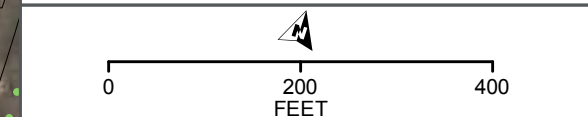
SHEET 12 OF 57


DATA SOURCES: Environmental Systems Research Institute, Indiana Historic Sites and Structures Inventory, National Resource Commission, Northern Indiana Commuter Transportation District, U.S. National Park Service, U.S. Census Bureau, U.S. Geological Survey, U.S. Department of the Interior, U.S. Fish & Wildlife Service
BACKGROUND SOURCE: ESRI, DIGITALGLOBE, GEOEYE, EARTHSTAR GEOGRAPHICS, CNES/AIRBUS DS, USDA, USGS, AEX, GETMAPPING, AEROGRIID, IGN, IGP, SWISSTOPO, AND THE GIS USER COMMUNITY




- Proposed Construction Footprint - 10/31/2016
- Proposed Direct Effects APE
- Proposed Indirect Effects APE
- Railroad Right-of-Way
- Milepost
- NICTD Station
- Proposed New NICTD Bridge
- Proposed Crossing Closure
- Proposed Station Parking
- Anticipated Property Take
- National Register of Historic Places Historic Property
- Indiana Historic Sites and Structures Inventory Surveyed Historic Resource – Outstanding
- Indiana Historic Sites and Structures Inventory Surveyed Historic Resource – Noteworthy
- Indiana Historic Sites and Structures Inventory Surveyed Historic Resource – Contributing
- Swedish Farmstead
- National Register of Historic Places Historic District
- Indiana Dunes National Lakeshore
- Indiana Dunes State Park
- Parcel Boundary

**CULTURAL RESOURCES
PROPOSED AREA OF
POTENTIAL EFFECTS (APE)
12/15/2016**

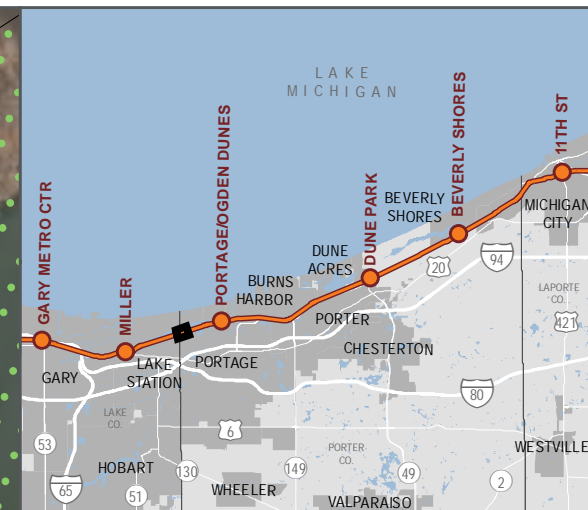






SHEET 13 OF 57

DATA SOURCES: Environmental Systems Research Institute, Indiana Historic Sites and Structures Inventory, National Resource Commission, Northern Indiana Commuter Transportation District, U.S. National Park Service, U.S. Census Bureau, U.S. Geological Survey, U.S. Department of the Interior, U.S. Fish & Wildlife Service
BACKGROUND SOURCE: ESRI, DIGITALGLOBE, GEOEYE, EARTHSTAR GEOGRAPHICS, CNES/AIRBUS DS, USDA, USGS, AEX, GETMAPPING, AEROGRIID, IGN, IGP, SWISSTOPO, AND THE GIS USER COMMUNITY

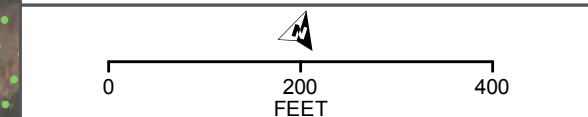



- Proposed Construction Footprint - 10/31/2016
- Proposed Direct Effects APE
- Proposed Indirect Effects APE
- Railroad Right-of-Way
- Milepost
- NICTD Station
- Proposed New NICTD Bridge
- Proposed Crossing Closure
- Proposed Station Parking
- Anticipated Property Take
- National Register of Historic Places Historic Property
- Indiana Historic Sites and Structures Inventory Surveyed Historic Resource – Outstanding
- Indiana Historic Sites and Structures Inventory Surveyed Historic Resource – Noteworthy
- Indiana Historic Sites and Structures Inventory Surveyed Historic Resource – Contributing
- Swedish Farmstead
- National Register of Historic Places Historic District
- Indiana Dunes National Lakeshore
- Indiana Dunes State Park
- Parcel Boundary


NO CONSTRUCTION
PROPOSED IN THIS AREA

Indiana Dunes
National
Lakeshore

**CULTURAL RESOURCES
PROPOSED AREA OF
POTENTIAL EFFECTS (APE)
12/15/2016**

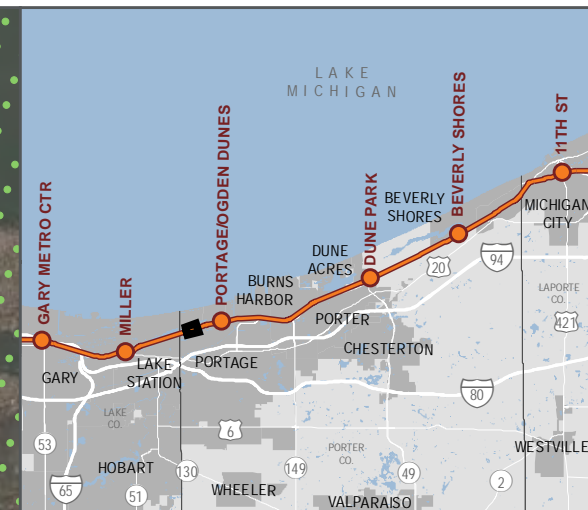






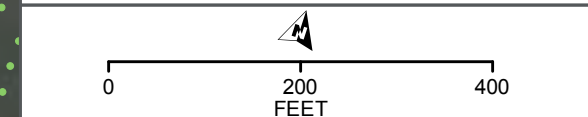
SHEET 14 OF 57

DATA SOURCES: Environmental Systems Research Institute, Indiana Historic Sites and Structures Inventory, National Resource Commission, Northern Indiana Commuter Transportation District, U.S. National Park Service, U.S. Census Bureau, U.S. Geological Survey, U.S. Department of the Interior, U.S. Fish & Wildlife Service
BACKGROUND SOURCE: ESRI, DIGITALGLOBE, GEOEYE, EARTHSTAR GEOGRAPHICS, CNES/AIRBUS DS, USDA, USGS, AEX, GETMAPPING, AEROGRIID, IGN, IGP, SWISSTOPO, AND THE GIS USER COMMUNITY




- Proposed Construction Footprint - 10/31/2016
- Proposed Direct Effects APE
- Proposed Indirect Effects APE
- Railroad Right-of-Way
- Milepost
- NICTD Station
- Proposed New NICTD Bridge
- Proposed Crossing Closure
- Proposed Station Parking
- Anticipated Property Take
- National Register of Historic Places Historic Property
- Indiana Historic Sites and Structures Inventory Surveyed Historic Resource – Outstanding
- Indiana Historic Sites and Structures Inventory Surveyed Historic Resource – Noteworthy
- Indiana Historic Sites and Structures Inventory Surveyed Historic Resource – Contributing
- Swedish Farmstead
- National Register of Historic Places Historic District
- Indiana Dunes National Lakeshore
- Indiana Dunes State Park
- Parcel Boundary

**CULTURAL RESOURCES
PROPOSED AREA OF
POTENTIAL EFFECTS (APE)
12/15/2016**

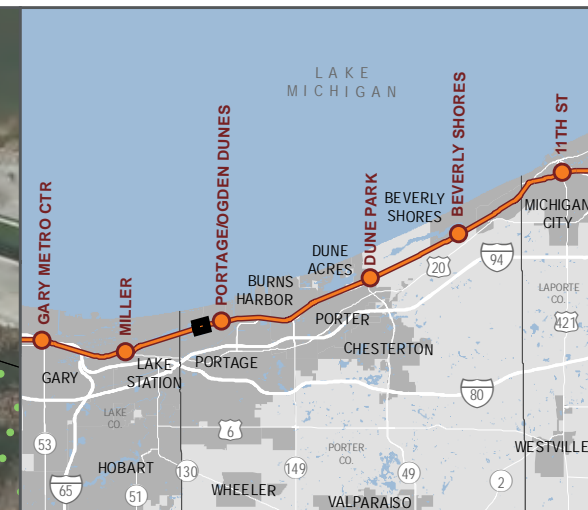






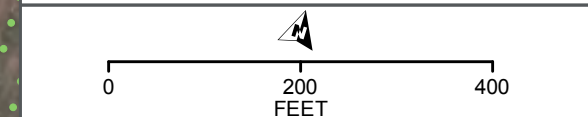
SHEET 15 OF 57


DATA SOURCES: Environmental Systems Research Institute, Indiana Historic Sites and Structures Inventory, National Resource Commission, Northern Indiana Commuter Transportation District, U.S. National Park Service, U.S. Census Bureau, U.S. Geological Survey, U.S. Department of the Interior, U.S. Fish & Wildlife Service
BACKGROUND SOURCE: ESRI, DIGITALGLOBE, GEOEYE, EARTHSTAR GEOGRAPHICS, CNES/AIRBUS DS, USDA, USGS, AEX, GETMAPPING, AEROGRIID, IGN, IGP, SWISSTOPO, AND THE GIS USER COMMUNITY




- Proposed Construction Footprint - 10/31/2016
- Proposed Direct Effects APE
- Proposed Indirect Effects APE
- Railroad Right-of-Way
- Milepost
- NICTD Station
- Proposed New NICTD Bridge
- Proposed Crossing Closure
- Proposed Station Parking
- Anticipated Property Take
- National Register of Historic Places Historic Property
- Indiana Historic Sites and Structures Inventory Surveyed Historic Resource – Outstanding
- Indiana Historic Sites and Structures Inventory Surveyed Historic Resource – Noteworthy
- Indiana Historic Sites and Structures Inventory Surveyed Historic Resource – Contributing
- Swedish Farmstead
- National Register of Historic Places Historic District
- Indiana Dunes National Lakeshore
- Indiana Dunes State Park
- Parcel Boundary

**CULTURAL RESOURCES
PROPOSED AREA OF
POTENTIAL EFFECTS (APE)
12/15/2016**

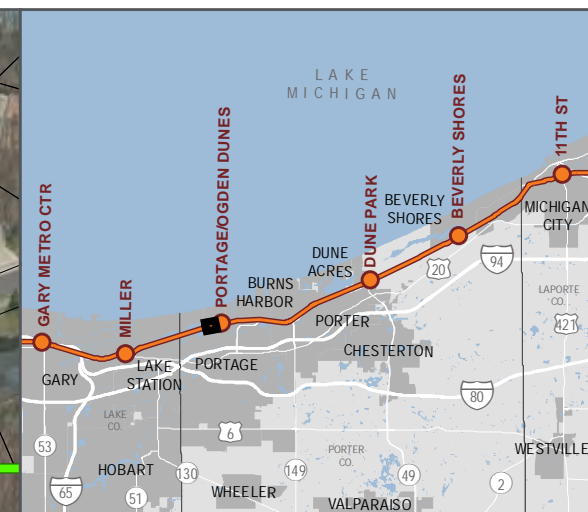
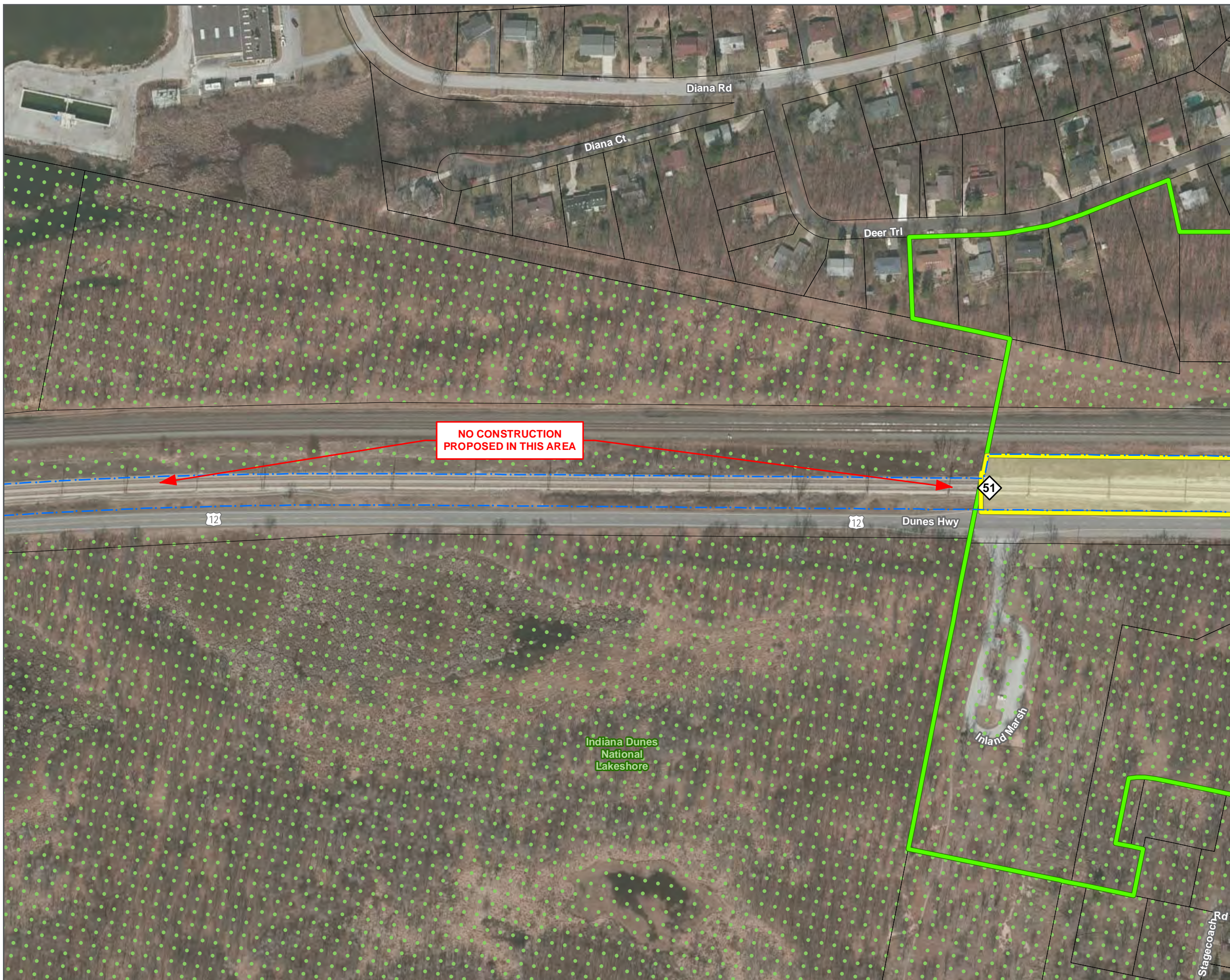






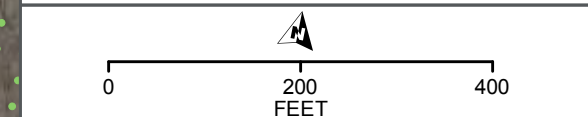
SHEET 16 OF 57


DATA SOURCES: Environmental Systems Research Institute, Indiana Historic Sites and Structures Inventory, National Resource Commission, Northern Indiana Commuter Transportation District, U.S. National Park Service, U.S. Census Bureau, U.S. Geological Survey, U.S. Department of the Interior, U.S. Fish & Wildlife Service
BACKGROUND SOURCE: ESRI, DIGITALGLOBE, GEOEYE, EARTHSTAR GEOGRAPHICS, CNES/AIRBUS DS, USDA, USGS, AEX, GETMAPPING, AEROGRIID, IGN, IGP, SWISSTOPO, AND THE GIS USER COMMUNITY



- Proposed Construction Footprint - 10/31/2016
- Proposed Direct Effects APE
- Proposed Indirect Effects APE
- Railroad Right-of-Way
- Milepost
- NICTD Station
- Proposed New NICTD Bridge
- Proposed Crossing Closure
- Proposed Station Parking
- Anticipated Property Take
- National Register of Historic Places Historic Property
- Indiana Historic Sites and Structures Inventory Surveyed Historic Resource – Outstanding
- Indiana Historic Sites and Structures Inventory Surveyed Historic Resource – Noteworthy
- Indiana Historic Sites and Structures Inventory Surveyed Historic Resource – Contributing
- Swedish Farmstead
- National Register of Historic Places Historic District
- Indiana Dunes National Lakeshore
- Indiana Dunes State Park
- Parcel Boundary

**CULTURAL RESOURCES
PROPOSED AREA OF
POTENTIAL EFFECTS (APE)
12/15/2016**

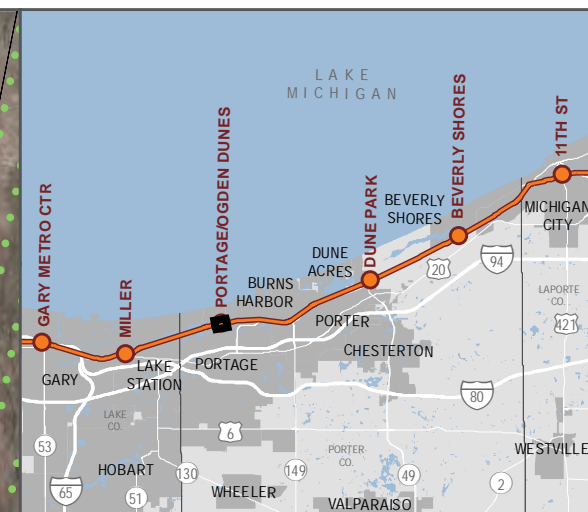
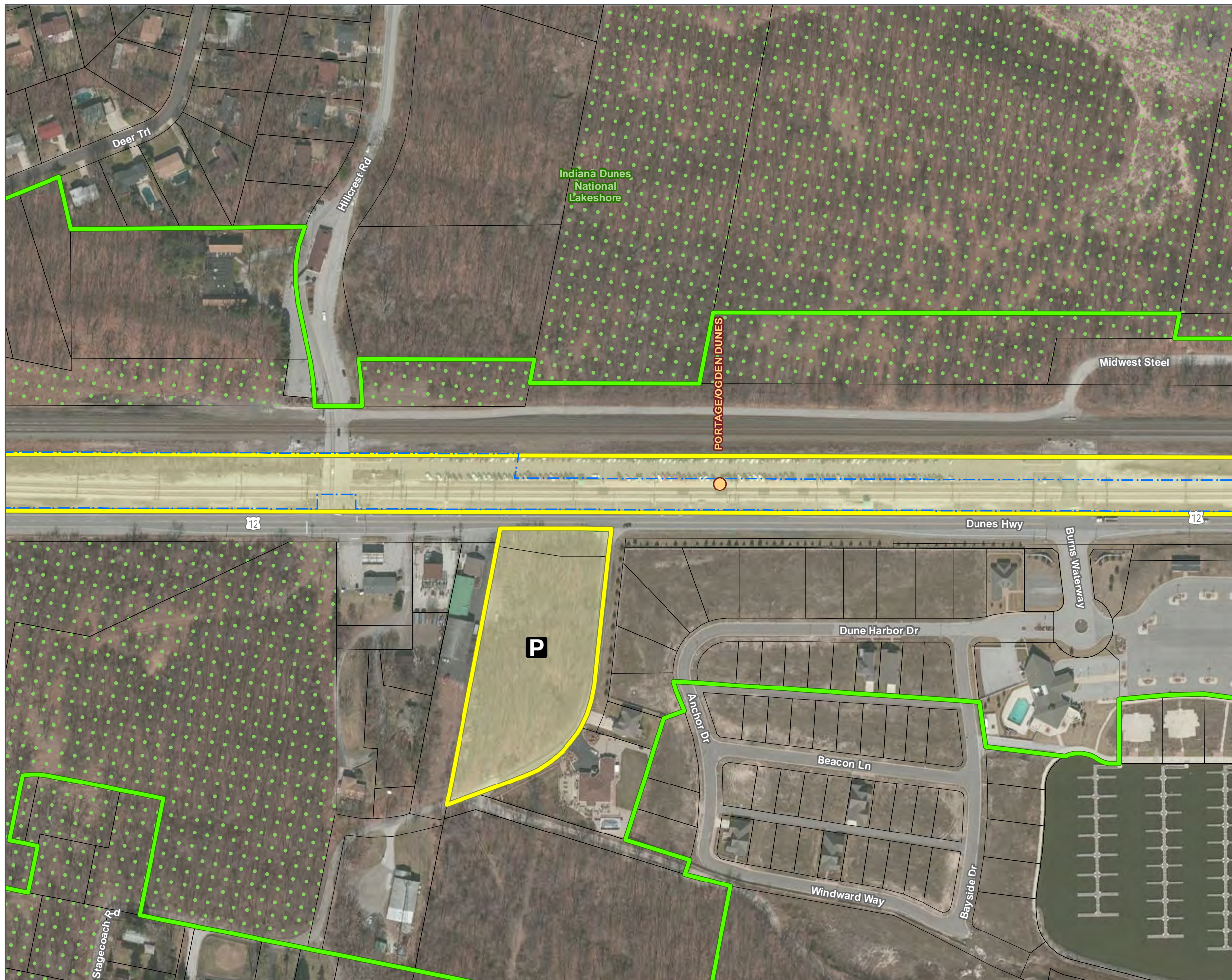






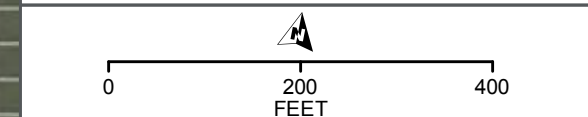
SHEET 17 OF 57

DATA SOURCES: Environmental Systems Research Institute, Indiana Historic Sites and Structures Inventory, National Resource Commission, Northern Indiana Commuter Transportation District, U.S. National Park Service, U.S. Census Bureau, U.S. Geological Survey, U.S. Department of the Interior, U.S. Fish & Wildlife Service
BACKGROUND SOURCE: ESRI, DIGITALGLOBE, GEOEYE, EARTHSTAR GEOGRAPHICS, CNES/AIRBUS DS, USDA, USGS, AEX, GETMAPPING, AEROGRIID, IGN, IGP, SWISSTOPO, AND THE GIS USER COMMUNITY



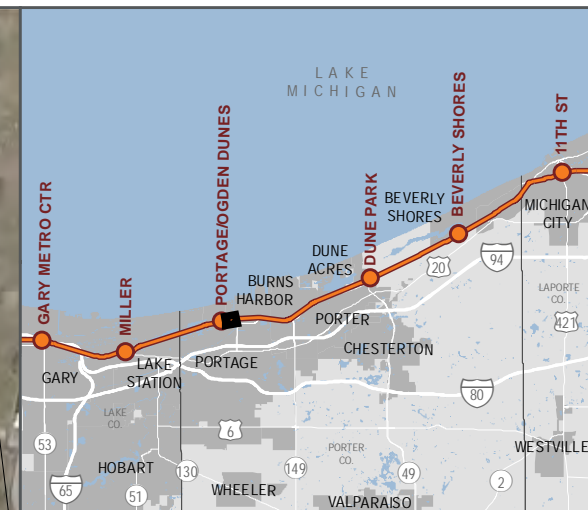
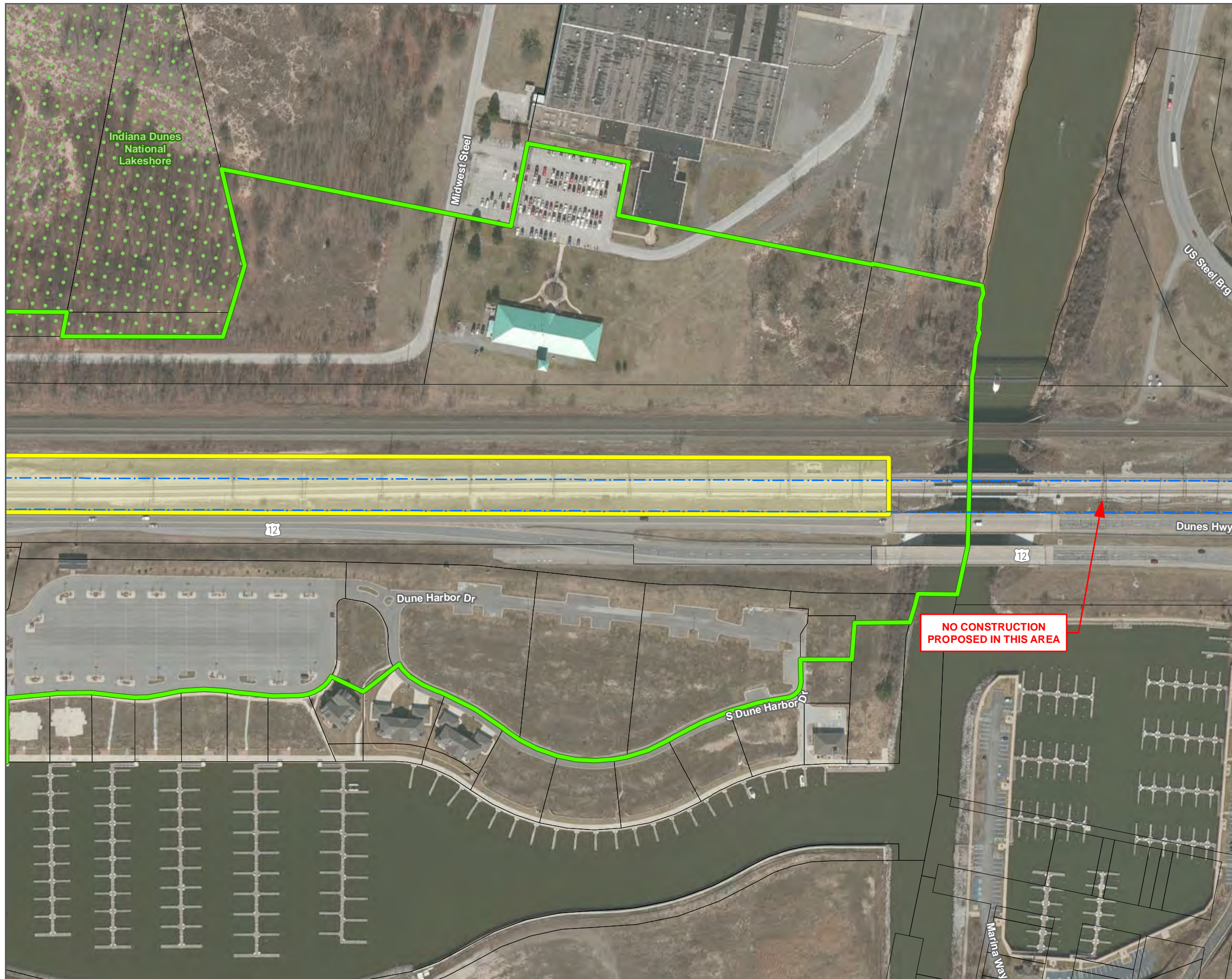
- Proposed Construction Footprint - 10/31/2016
- Proposed Direct Effects APE
- Proposed Indirect Effects APE
- Railroad Right-of-Way
- Milepost
- NICTD Station
- Proposed New NICTD Bridge
- Proposed Crossing Closure
- Proposed Station Parking
- Anticipated Property Take
- National Register of Historic Places Historic Property
- Indiana Historic Sites and Structures Inventory Surveyed Historic Resource – Outstanding
- Indiana Historic Sites and Structures Inventory Surveyed Historic Resource – Noteworthy
- Indiana Historic Sites and Structures Inventory Surveyed Historic Resource – Contributing
- Swedish Farmstead
- National Register of Historic Places Historic District
- Indiana Dunes National Lakeshore
- Indiana Dunes State Park
- Parcel Boundary

**CULTURAL RESOURCES
PROPOSED AREA OF
POTENTIAL EFFECTS (APE)
12/15/2016**



SHEET 18 OF 57

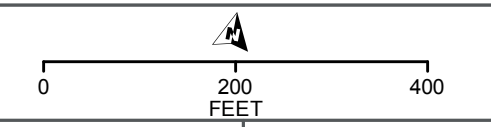
DATA SOURCES: Environmental Systems Research Institute, Indiana Historic Sites and Structures Inventory, National Resource Commission, Northern Indiana Commuter Transportation District, U.S. National Park Service, U.S. Census Bureau, U.S. Geological Survey, U.S. Department of the Interior, U.S. Fish & Wildlife Service
BACKGROUND SOURCE: ESRI, DIGITALGLOBE, GEOEYE, EARTHSTAR GEOGRAPHICS, CNES/AIRBUS DS, USDA, USGS, AEX, GETMAPPING, AEROGRIID, IGN, IGP, SWISSTOPO, AND THE GIS USER COMMUNITY



- Proposed Construction Footprint - 10/31/2016
- Proposed Direct Effects APE
- Proposed Indirect Effects APE
- Railroad Right-of-Way
- Milepost
- NICTD Station
- Proposed New NICTD Bridge
- Proposed Crossing Closure
- P Proposed Station Parking
- Anticipated Property Take
- National Register of Historic Places Historic Property
- Indiana Historic Sites and Structures Inventory Surveyed Historic Resource – Outstanding
- Indiana Historic Sites and Structures Inventory Surveyed Historic Resource – Noteworthy
- Indiana Historic Sites and Structures Inventory Surveyed Historic Resource – Contributing
- Swedish Farmstead
- National Register of Historic Places Historic District
- Indiana Dunes National Lakeshore
- Indiana Dunes State Park
- Parcel Boundary

DATA FOR REFERENCE ONLY

**CULTURAL RESOURCES
PROPOSED AREA OF
POTENTIAL EFFECTS (APE)
12/15/2016**

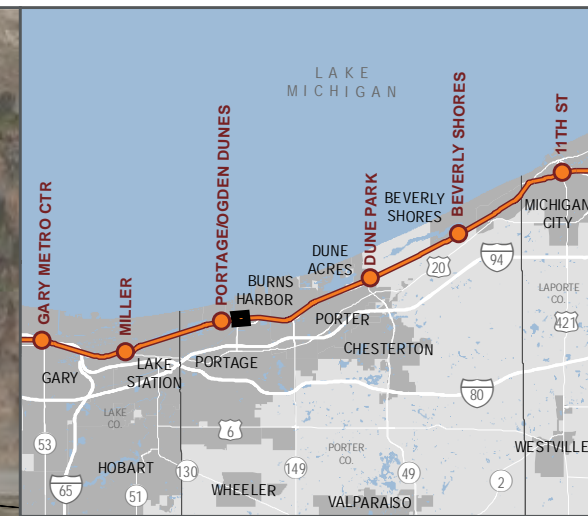






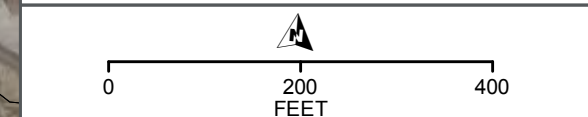
SHEET 19 OF 57

DATA SOURCES: Environmental Systems Research Institute, Indiana Historic Sites and Structures Inventory, National Resource Commission, Northern Indiana Commuter Transportation District, U.S. National Park Service, U.S. Census Bureau, U.S. Geological Survey, U.S. Department of the Interior, U.S. Fish & Wildlife Service
BACKGROUND SOURCE: ESRI, DIGITALGLOBE, GEOEYE, EARTHSTAR GEOGRAPHICS, CNES/AIRBUS DS, USDA, USGS, AEX, GETMAPPING, AEROGRIID, IGN, IGP, SWISSTOPO, AND THE GIS USER COMMUNITY



- Proposed Construction Footprint - 10/31/2016
- Proposed Direct Effects APE
- Proposed Indirect Effects APE
- Railroad Right-of-Way
- Milepost
- NICTD Station
- Proposed New NICTD Bridge
- Proposed Crossing Closure
- P Proposed Station Parking
- Anticipated Property Take
- National Register of Historic Places
Historic Property
- Indiana Historic Sites and Structures Inventory
Surveyed Historic Resource – Outstanding
- Indiana Historic Sites and Structures Inventory
Surveyed Historic Resource – Noteworthy
- Indiana Historic Sites and Structures Inventory
Surveyed Historic Resource – Contributing
- Swedish Farmstead
- National Register of Historic Places
Historic District
- Indiana Dunes National Lakeshore
- Indiana Dunes State Park
- Parcel Boundary

**CULTURAL RESOURCES
PROPOSED AREA OF
POTENTIAL EFFECTS (APE)
12/15/2016**







SHEET 20 OF 57

DATA SOURCES: Environmental Systems Research Institute, Indiana Historic Sites and Structures Inventory, National Resource Commission, Northern Indiana Commuter Transportation District, U.S. National Park Service, U.S. Census Bureau, U.S. Geological Survey, U.S. Department of the Interior, U.S. Fish & Wildlife Service
BACKGROUND SOURCE: ESRI, DIGITALGLOBE, GEOEYE, EARTHSTAR GEOGRAPHICS, CNES/AIRBUS DS, USDA, USGS, AEX, GETMAPPING, AEROGRIID, IGN, IGP, SWISSTOPO, AND THE GIS USER COMMUNITY