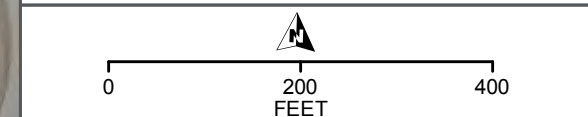



- Proposed Construction Footprint - 10/31/2016
- Proposed Direct Effects APE
- Proposed Indirect Effects APE
- Railroad Right-of-Way
- Milepost
- NICTD Station
- Proposed New NICTD Bridge
- Proposed Crossing Closure
- Proposed Station Parking
- Anticipated Property Take
- National Register of Historic Places  
Historic Property
- Indiana Historic Sites and Structures Inventory  
Surveyed Historic Resource – Outstanding
- Indiana Historic Sites and Structures Inventory  
Surveyed Historic Resource – Noteworthy
- Indiana Historic Sites and Structures Inventory  
Surveyed Historic Resource – Contributing
- Swedish Farmstead
- National Register of Historic Places  
Historic District
- Indiana Dunes National Lakeshore
- Indiana Dunes State Park
- Parcel Boundary

**CULTURAL RESOURCES  
PROPOSED AREA OF  
POTENTIAL EFFECTS (APE)  
12/15/2016**



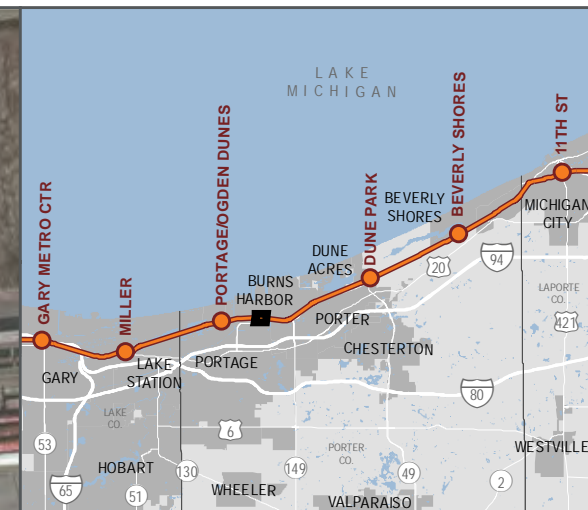




SHEET 21 OF 57

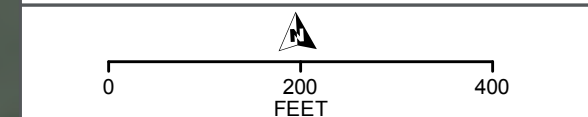
DATA SOURCES: Environmental Systems Research Institute, Indiana Historic Sites and Structures Inventory, National Resource Commission, Northern Indiana Commuter Transportation District, U.S. National Park Service, U.S. Census Bureau, U.S. Geological Survey, U.S. Department of the Interior, U.S. Fish & Wildlife Service  
BACKGROUND SOURCE: ESRI, DIGITALGLOBE, GEOEYE, EARTHSTAR GEOGRAPHICS, CNES/AIRBUS DS, USDA, USGS, AEX, GETMAPPING, AERGRID, IGN, IGP, SWISSTOPO, AND THE GIS USER COMMUNITY






- Proposed Construction Footprint - 10/31/2016
- Proposed Direct Effects APE
- Proposed Indirect Effects APE
- Railroad Right-of-Way
- Milepost
- NICTD Station
- Proposed New NICTD Bridge
- Proposed Crossing Closure
- Proposed Station Parking
- Anticipated Property Take
- National Register of Historic Places  
Historic Property
- Indiana Historic Sites and Structures Inventory  
Surveyed Historic Resource – Outstanding
- Indiana Historic Sites and Structures Inventory  
Surveyed Historic Resource – Noteworthy
- Indiana Historic Sites and Structures Inventory  
Surveyed Historic Resource – Contributing
- Swedish Farmstead
- National Register of Historic Places  
Historic District
- Indiana Dunes National Lakeshore
- Indiana Dunes State Park
- Parcel Boundary

**CULTURAL RESOURCES  
PROPOSED AREA OF  
POTENTIAL EFFECTS (APE)  
12/15/2016**



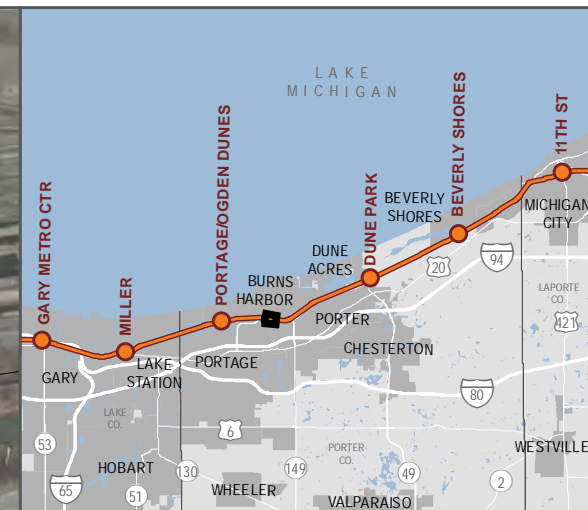
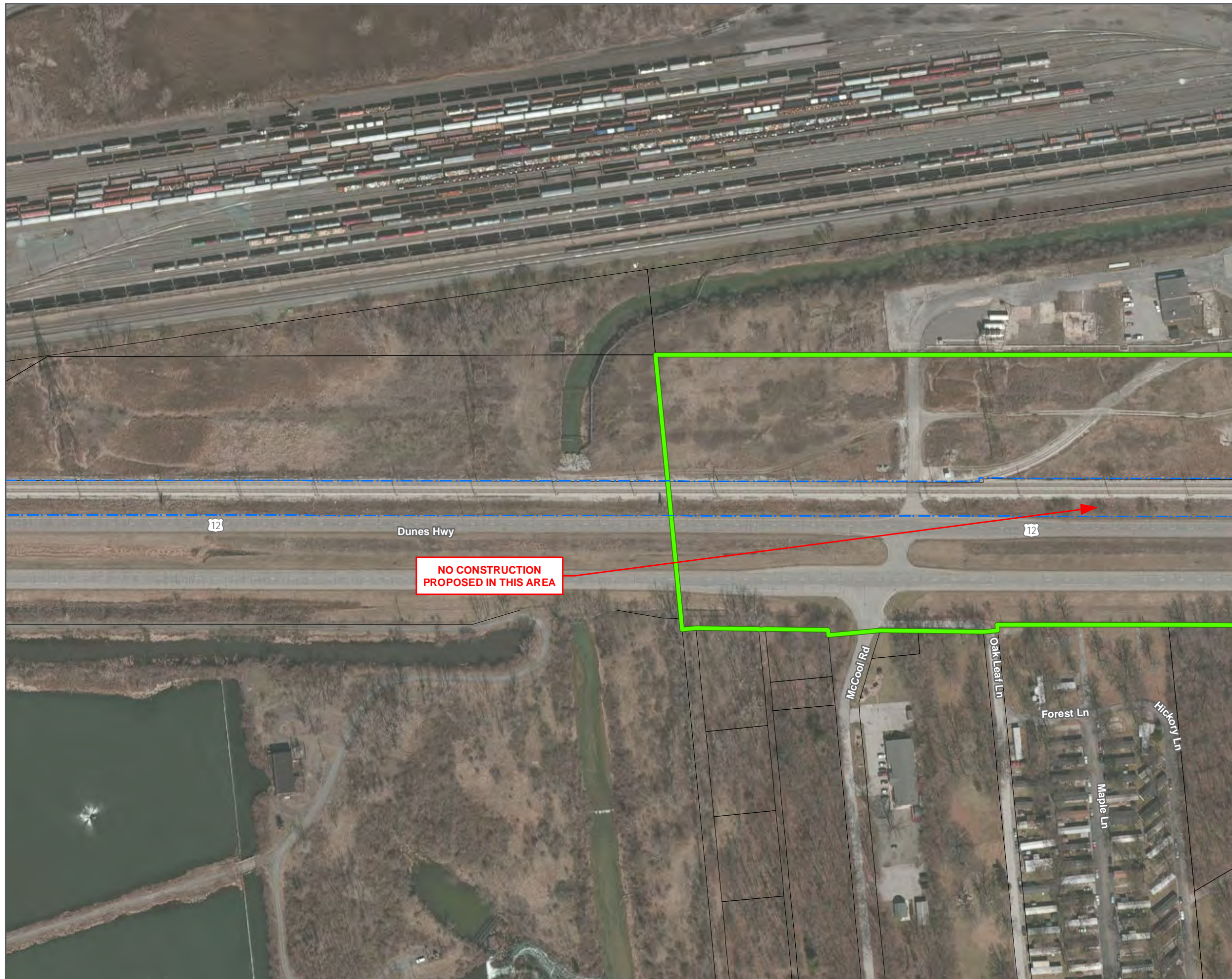




SHEET 22 OF 57

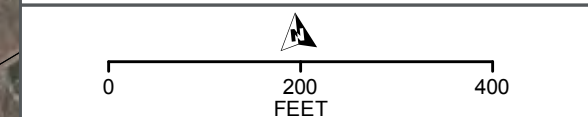
DATA SOURCES: Environmental Systems Research Institute, Indiana Historic Sites and Structures Inventory, National Resource Commission, Northern Indiana Commuter Transportation District, U.S. National Park Service, U.S. Census Bureau, U.S. Geological Survey, U.S. Department of the Interior, U.S. Fish & Wildlife Service  
BACKGROUND SOURCE: ESRI, DIGITALGLOBE, GEOEYE, EARTHSTAR GEOGRAPHICS, CNES/AIRBUS DS, USGS, AEX, GETMAPPING, AEROGRIID, IGN, IGP, SWISSTOPO, AND THE GIS USER COMMUNITY







- Proposed Construction Footprint - 10/31/2016
- Proposed Direct Effects APE
- Proposed Indirect Effects APE
- Railroad Right-of-Way
- Milepost
- NICTD Station
- Proposed New NICTD Bridge
- Proposed Crossing Closure
- Proposed Station Parking
- Anticipated Property Take
- National Register of Historic Places Historic Property
- Indiana Historic Sites and Structures Inventory Surveyed Historic Resource – Outstanding
- Indiana Historic Sites and Structures Inventory Surveyed Historic Resource – Noteworthy
- Indiana Historic Sites and Structures Inventory Surveyed Historic Resource – Contributing
- Swedish Farmstead
- National Register of Historic Places Historic District
- Indiana Dunes National Lakeshore
- Indiana Dunes State Park
- Parcel Boundary

**CULTURAL RESOURCES  
PROPOSED AREA OF  
POTENTIAL EFFECTS (APE)  
12/15/2016**



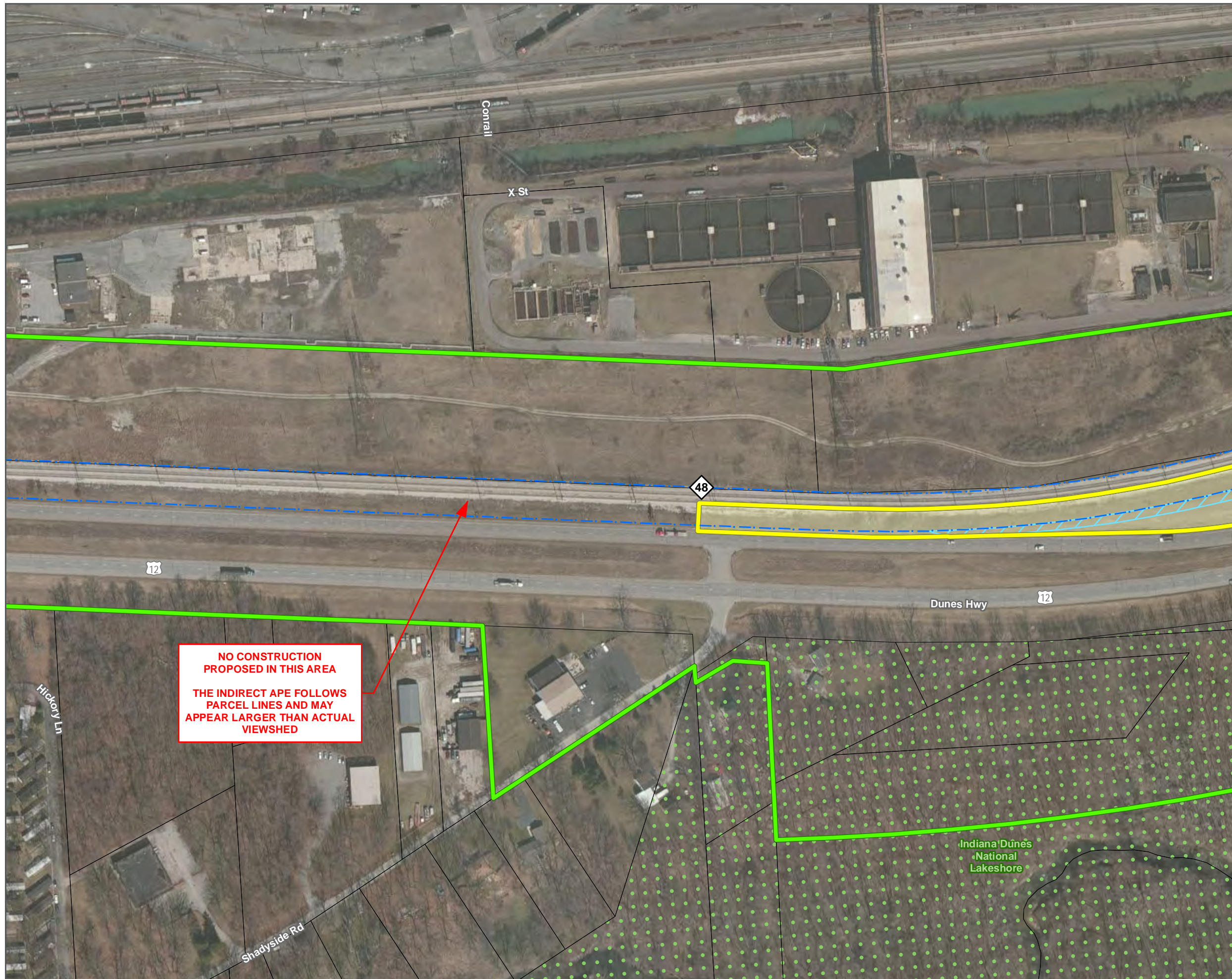




SHEET 23 OF 57

DATA SOURCES: Environmental Systems Research Institute, Indiana Historic Sites and Structures Inventory, National Resource Commission, Northern Indiana Commuter Transportation District, U.S. National Park Service, U.S. Census Bureau, U.S. Geological Survey, U.S. Department of the Interior, U.S. Fish & Wildlife Service  
BACKGROUND SOURCE: ESRI, DIGITALGLOBE, GEOEYE, EARTHSTAR GEOGRAPHICS, CNES/AIRBUS DS, USDA, USGS, AEX, GETMAPPING, AERGRID, IGN, IGP, SWISSTOPO, AND THE GIS USER COMMUNITY





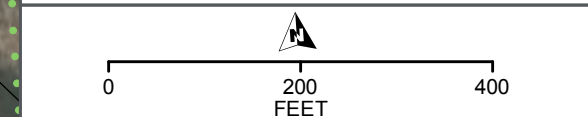
**NO CONSTRUCTION  
PROPOSED IN THIS AREA**

**THE INDIRECT APE FOLLOWS  
PARCEL LINES AND MAY  
APPEAR LARGER THAN ACTUAL  
VIEWSHED**



- Proposed Construction Footprint - 10/31/2016
- Proposed Direct Effects APE
- Proposed Indirect Effects APE
- Railroad Right-of-Way
- Milepost
- NICTD Station
- Proposed New NICTD Bridge
- ✕ Proposed Crossing Closure
- P Proposed Station Parking
- Anticipated Property Take
- National Register of Historic Places  
Historic Property
- Indiana Historic Sites and Structures Inventory  
Surveyed Historic Resource – Outstanding
- Indiana Historic Sites and Structures Inventory  
Surveyed Historic Resource – Noteworthy
- Indiana Historic Sites and Structures Inventory  
Surveyed Historic Resource – Contributing
- Swedish Farmstead
- National Register of Historic Places  
Historic District
- Indiana Dunes National Lakeshore
- Indiana Dunes State Park
- Parcel Boundary

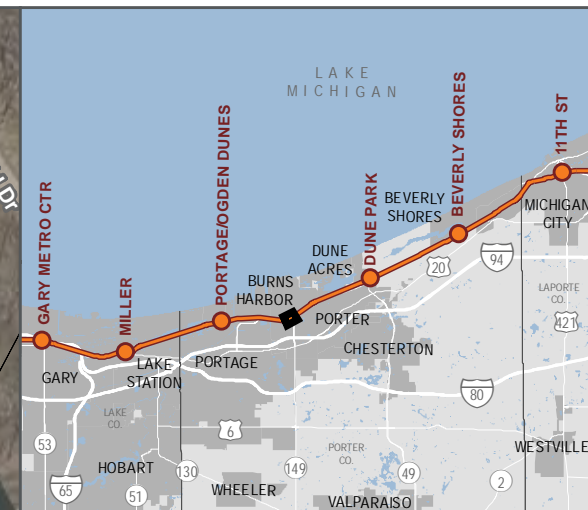
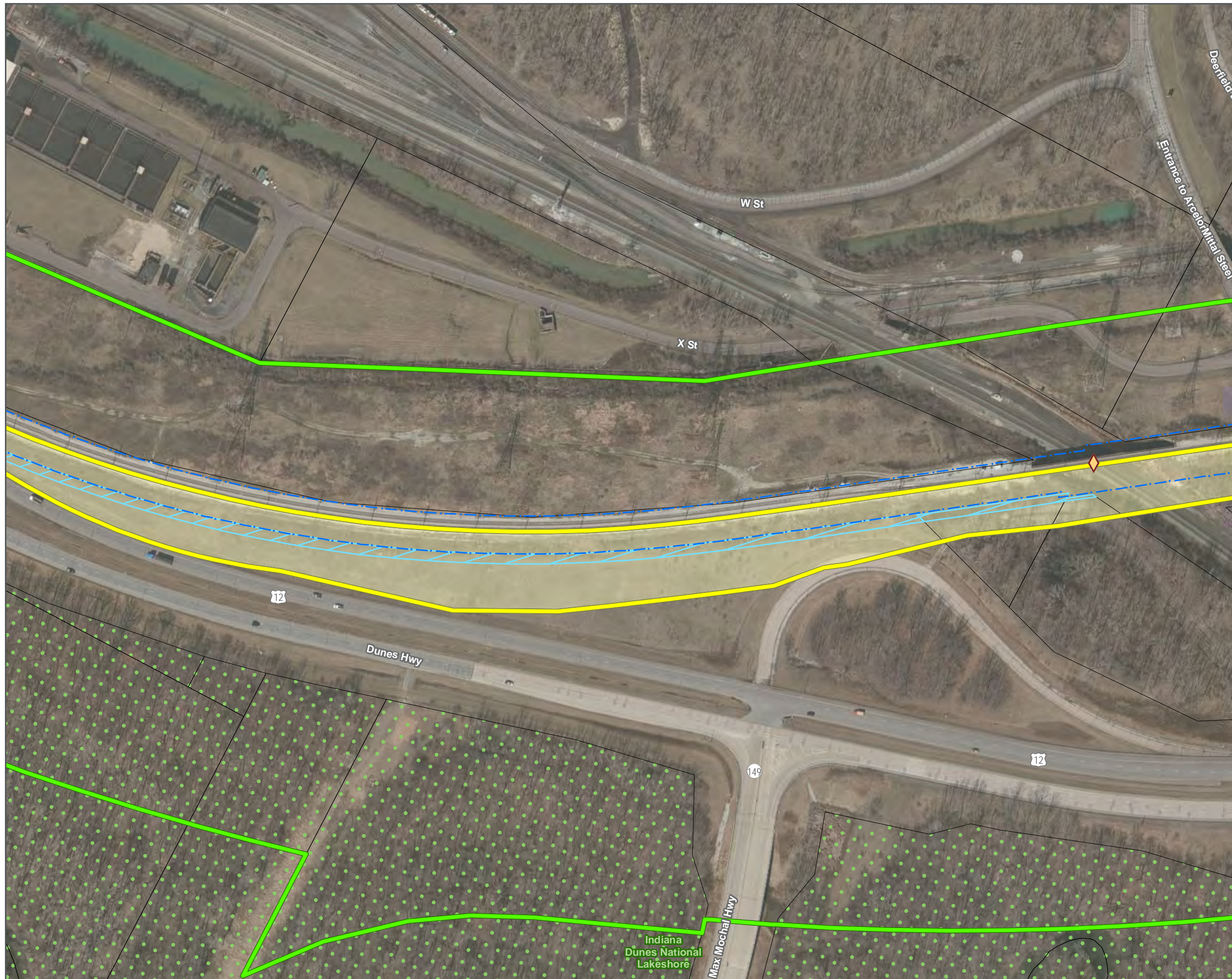
**CULTURAL RESOURCES  
PROPOSED AREA OF  
POTENTIAL EFFECTS (APE)  
12/15/2016**



SHEET 24 OF 57

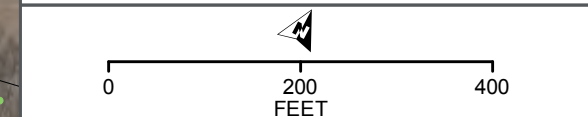
DATA SOURCES: Environmental Systems Research Institute, Indiana Historic Sites and Structures Inventory, National Resource Commission, Northern Indiana Commuter Transportation District, U.S. National Park Service, U.S. Census Bureau, U.S. Geological Survey, U.S. Department of the Interior, U.S. Fish & Wildlife Service  
BACKGROUND SOURCE: ESRI, DIGITALGLOBE, GEOEYE, EARTHSTAR GEOGRAPHICS, CNES/AIRBUS DS, USDA, USGS, AEX, GETMAPPING, AEROGRIID, IGN, IGP, SWISSTOPO, AND THE GIS USER COMMUNITY





- Proposed Construction Footprint - 10/31/2016
- Proposed Direct Effects APE
- Proposed Indirect Effects APE
- Railroad Right-of-Way
- Milepost
- NICTD Station
- Proposed New NICTD Bridge
- Proposed Crossing Closure
- Proposed Station Parking
- Anticipated Property Take
- National Register of Historic Places Historic Property
- Indiana Historic Sites and Structures Inventory Surveyed Historic Resource – Outstanding
- Indiana Historic Sites and Structures Inventory Surveyed Historic Resource – Noteworthy
- Indiana Historic Sites and Structures Inventory Surveyed Historic Resource – Contributing
- Swedish Farmstead
- National Register of Historic Places Historic District
- Indiana Dunes National Lakeshore
- Indiana Dunes State Park
- Parcel Boundary

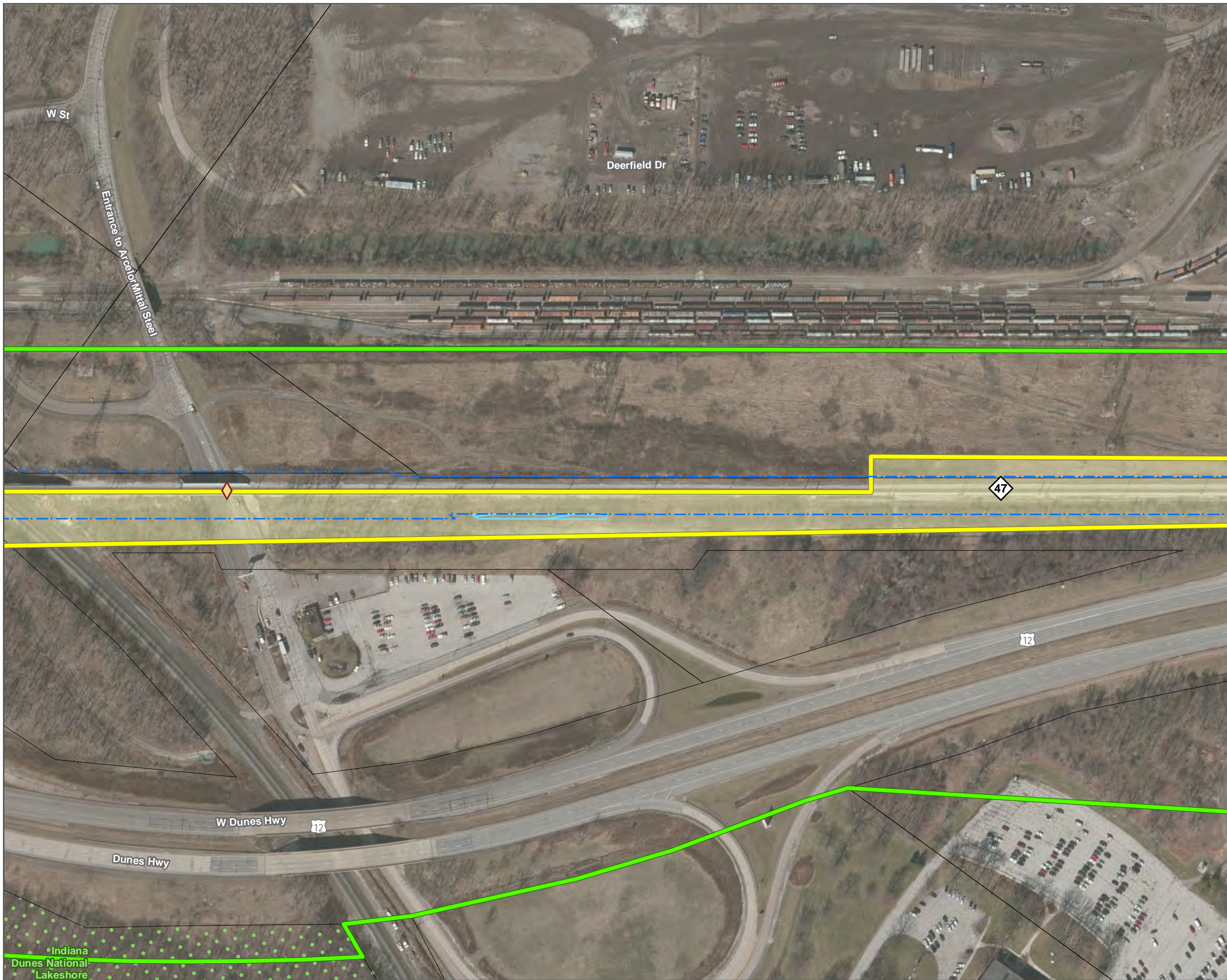
**CULTURAL RESOURCES  
PROPOSED AREA OF  
POTENTIAL EFFECTS (APE)  
12/15/2016**



SHEET 25 OF 57

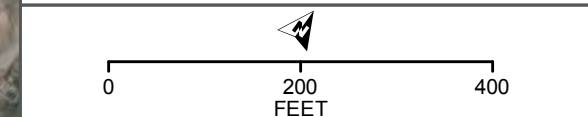
DATA SOURCES: Environmental Systems Research Institute, Indiana Historic Sites and Structures Inventory, National Resource Commission, Northern Indiana Commuter Transportation District, U.S. National Park Service, U.S. Census Bureau, U.S. Geological Survey, U.S. Department of the Interior, U.S. Fish & Wildlife Service  
BACKGROUND SOURCE: ESRI, DIGITALGLOBE, GEOEYE, EARTHSTAR GEOGRAPHICS, CNES/AIRBUS DS, USDA, USGS, AEX, GETMAPPING, AEROGRIID, IGN, IGP, SWISSTOPO, AND THE GIS USER COMMUNITY





- Proposed Construction Footprint - 10/31/2016
- Proposed Direct Effects APE
- Proposed Indirect Effects APE
- Railroad Right-of-Way
- Milepost
- NICTD Station
- Proposed New NICTD Bridge
- Proposed Crossing Closure
- Proposed Station Parking
- Anticipated Property Take
- National Register of Historic Places  
Historic Property
- Indiana Historic Sites and Structures Inventory  
Surveyed Historic Resource – Outstanding
- Indiana Historic Sites and Structures Inventory  
Surveyed Historic Resource – Noteworthy
- Indiana Historic Sites and Structures Inventory  
Surveyed Historic Resource – Contributing
- Swedish Farmstead
- National Register of Historic Places  
Historic District
- Indiana Dunes National Lakeshore
- Indiana Dunes State Park
- Parcel Boundary

**CULTURAL RESOURCES  
PROPOSED AREA OF  
POTENTIAL EFFECTS (APE)  
12/15/2016**



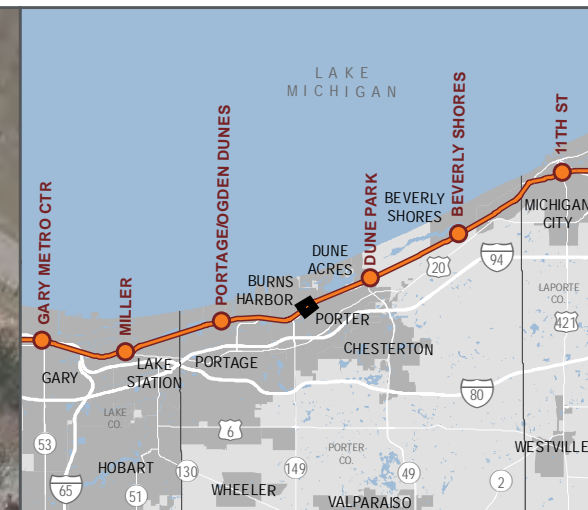




SHEET 26 OF 57

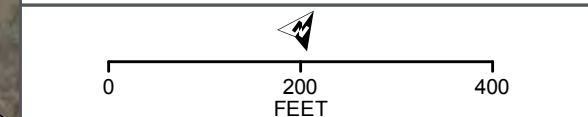
DATA SOURCES: Environmental Systems Research Institute, Indiana Historic Sites and Structures Inventory, National Resource Commission, Northern Indiana Commuter Transportation District, U.S. National Park Service, U.S. Census Bureau, U.S. Geological Survey, U.S. Department of the Interior, U.S. Fish & Wildlife Service  
BACKGROUND SOURCE: ESRI, DIGITALGLOBE, GEOEYE, EARTHSTAR GEOGRAPHICS, CNES/AIRBUS DS, USDA, USGS, AEX, GETMAPPING, AEROGRIID, IGN, IGP, SWISSTOPO, AND THE GIS USER COMMUNITY






- Proposed Construction Footprint - 10/31/2016
- Proposed Direct Effects APE
- Proposed Indirect Effects APE
- Railroad Right-of-Way
- Milepost
- NICTD Station
- Proposed New NICTD Bridge
- Proposed Crossing Closure
- Proposed Station Parking
- Anticipated Property Take
- National Register of Historic Places  
Historic Property
- Indiana Historic Sites and Structures Inventory  
Surveyed Historic Resource – Outstanding
- Indiana Historic Sites and Structures Inventory  
Surveyed Historic Resource – Noteworthy
- Indiana Historic Sites and Structures Inventory  
Surveyed Historic Resource – Contributing
- Swedish Farmstead
- National Register of Historic Places  
Historic District
- Indiana Dunes National Lakeshore
- Indiana Dunes State Park
- Parcel Boundary

**CULTURAL RESOURCES  
PROPOSED AREA OF  
POTENTIAL EFFECTS (APE)  
12/15/2016**



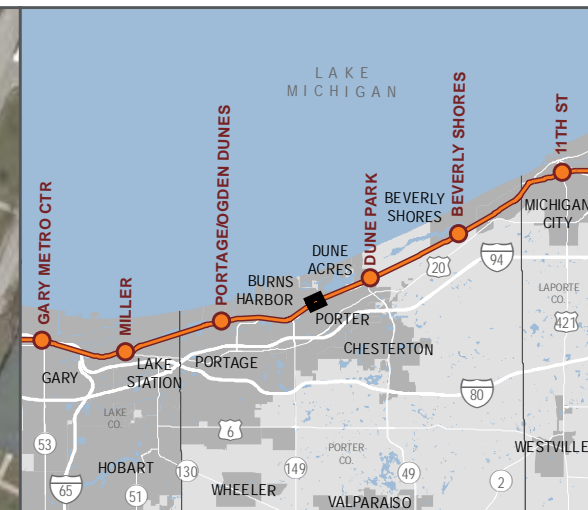
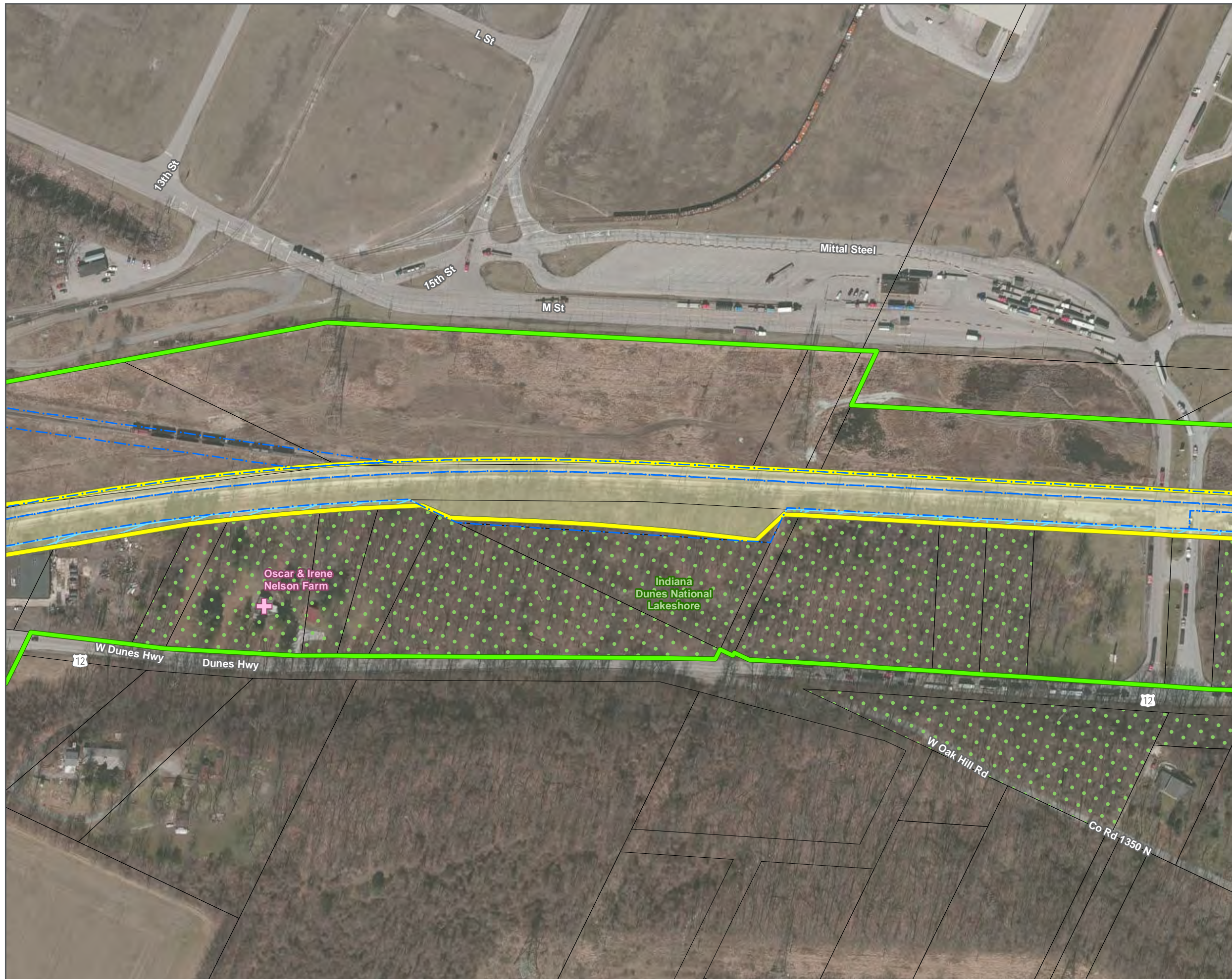




SHEET 27 OF 57

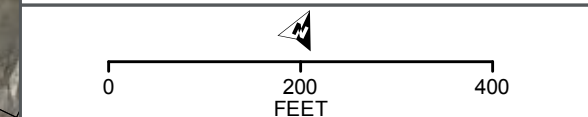
DATA SOURCES: Environmental Systems Research Institute, Indiana Historic Sites and Structures Inventory, National Resource Commission, Northern Indiana Commuter Transportation District, U.S. National Park Service, U.S. Census Bureau, U.S. Geological Survey, U.S. Department of the Interior, U.S. Fish & Wildlife Service  
BACKGROUND SOURCE: ESRI, DIGITALGLOBE, GEOEYE, EARTHSTAR GEOGRAPHICS, CNES/AIRBUS DS, USDA, USGS, AEX, GETMAPPING, AEROGRIID, IGN, IGP, SWISSTOPO, AND THE GIS USER COMMUNITY







- Proposed Construction Footprint - 10/31/2016
- Proposed Direct Effects APE
- Proposed Indirect Effects APE
- Railroad Right-of-Way
- Milepost
- NICTD Station
- Proposed New NICTD Bridge
- Proposed Crossing Closure
- Proposed Station Parking
- Anticipated Property Take
- National Register of Historic Places Historic Property
- Indiana Historic Sites and Structures Inventory Surveyed Historic Resource – Outstanding
- Indiana Historic Sites and Structures Inventory Surveyed Historic Resource – Noteworthy
- Indiana Historic Sites and Structures Inventory Surveyed Historic Resource – Contributing
- Swedish Farmstead
- National Register of Historic Places Historic District
- Indiana Dunes National Lakeshore
- Indiana Dunes State Park
- Parcel Boundary

**CULTURAL RESOURCES  
PROPOSED AREA OF  
POTENTIAL EFFECTS (APE)  
12/15/2016**



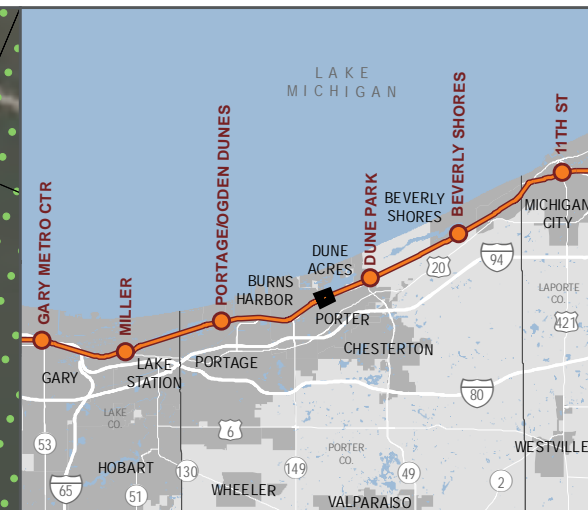
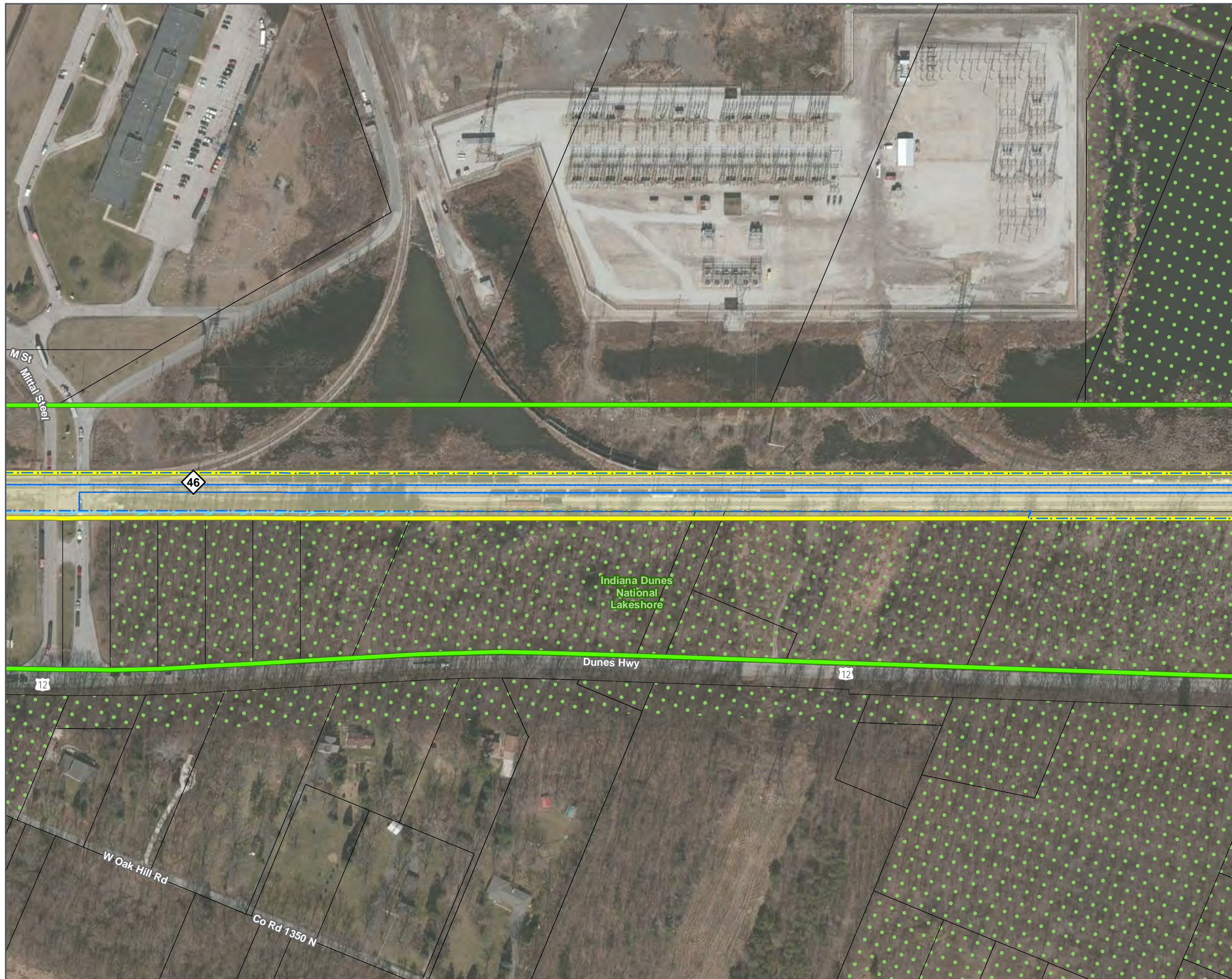




SHEET 28 OF 57

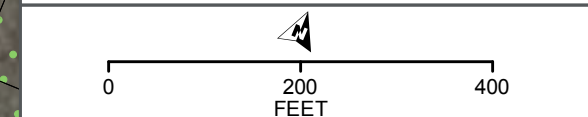
DATA SOURCES: Environmental Systems Research Institute, Indiana Historic Sites and Structures Inventory, National Resource Commission, Northern Indiana Commuter Transportation District, U.S. National Park Service, U.S. Census Bureau, U.S. Geological Survey, U.S. Department of the Interior, U.S. Fish & Wildlife Service  
BACKGROUND SOURCE: ESRI, DIGITALGLOBE, GEOEYE, EARTHSTAR GEOGRAPHICS, CNES/AIRBUS DS, USDA, USGS, AEX, GETMAPPING, AEROGRIID, IGN, IGP, SWISSTOPO, AND THE GIS USER COMMUNITY






- Proposed Construction Footprint - 10/31/2016
- Proposed Direct Effects APE
- Proposed Indirect Effects APE
- Railroad Right-of-Way
- Milepost
- NICTD Station
- Proposed New NICTD Bridge
- Proposed Crossing Closure
- Proposed Station Parking
- Anticipated Property Take
- National Register of Historic Places  
Historic Property
- Indiana Historic Sites and Structures Inventory  
Surveyed Historic Resource – Outstanding
- Indiana Historic Sites and Structures Inventory  
Surveyed Historic Resource – Noteworthy
- Indiana Historic Sites and Structures Inventory  
Surveyed Historic Resource – Contributing
- Swedish Farmstead
- National Register of Historic Places  
Historic District
- Indiana Dunes National Lakeshore
- Indiana Dunes State Park
- Parcel Boundary

**CULTURAL RESOURCES  
PROPOSED AREA OF  
POTENTIAL EFFECTS (APE)  
12/15/2016**



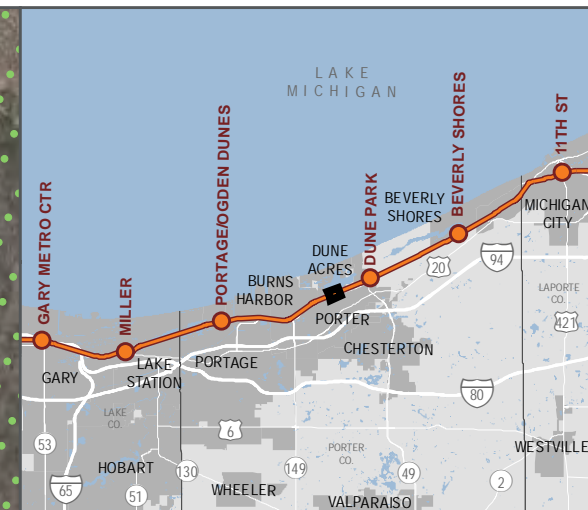
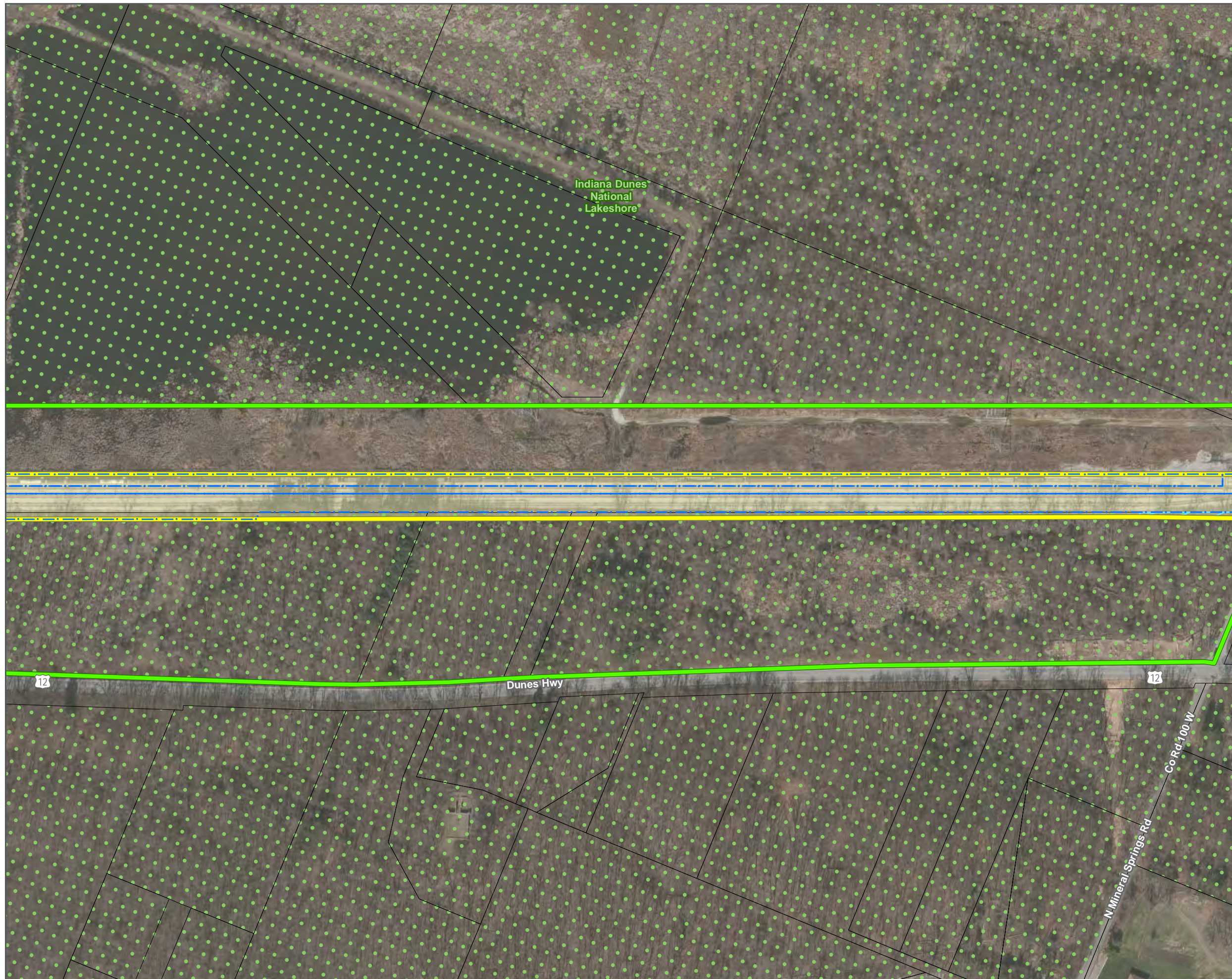




SHEET 29 OF 57

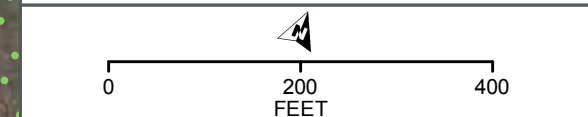
DATA SOURCES: Environmental Systems Research Institute, Indiana Historic Sites and Structures Inventory, National Resource Commission, Northern Indiana Commuter Transportation District, U.S. National Park Service, U.S. Census Bureau, U.S. Geological Survey, U.S. Department of the Interior, U.S. Fish & Wildlife Service  
BACKGROUND SOURCE: ESRI, DIGITALGLOBE, GEOEYE, EARTHSTAR GEOGRAPHICS, CNESAIRBUS DS, USDA, USGS, AEX, GETMAPPING, AEROGRIID, IGN, IGP, SWISSTOPO, AND THE GIS USER COMMUNITY






- Proposed Construction Footprint - 10/31/2016
- Proposed Direct Effects APE
- Proposed Indirect Effects APE
- Railroad Right-of-Way
- Milepost
- NICTD Station
- Proposed New NICTD Bridge
- Proposed Crossing Closure
- Proposed Station Parking
- Anticipated Property Take
- National Register of Historic Places  
Historic Property
- Indiana Historic Sites and Structures Inventory  
Surveyed Historic Resource – Outstanding
- Indiana Historic Sites and Structures Inventory  
Surveyed Historic Resource – Noteworthy
- Indiana Historic Sites and Structures Inventory  
Surveyed Historic Resource – Contributing
- Swedish Farmstead
- National Register of Historic Places  
Historic District
- Indiana Dunes National Lakeshore
- Indiana Dunes State Park
- Parcel Boundary

**CULTURAL RESOURCES  
PROPOSED AREA OF  
POTENTIAL EFFECTS (APE)  
12/15/2016**



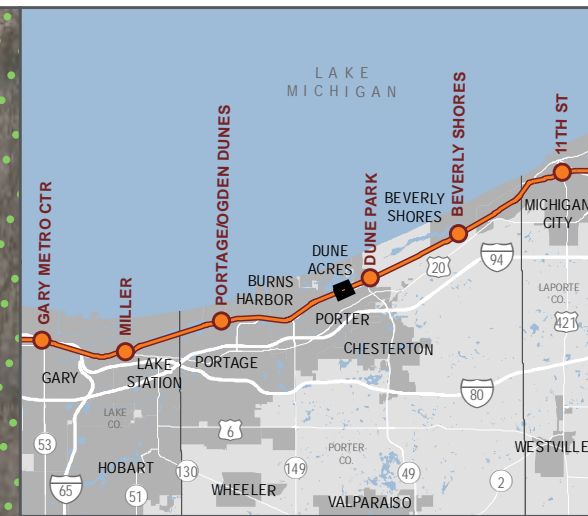
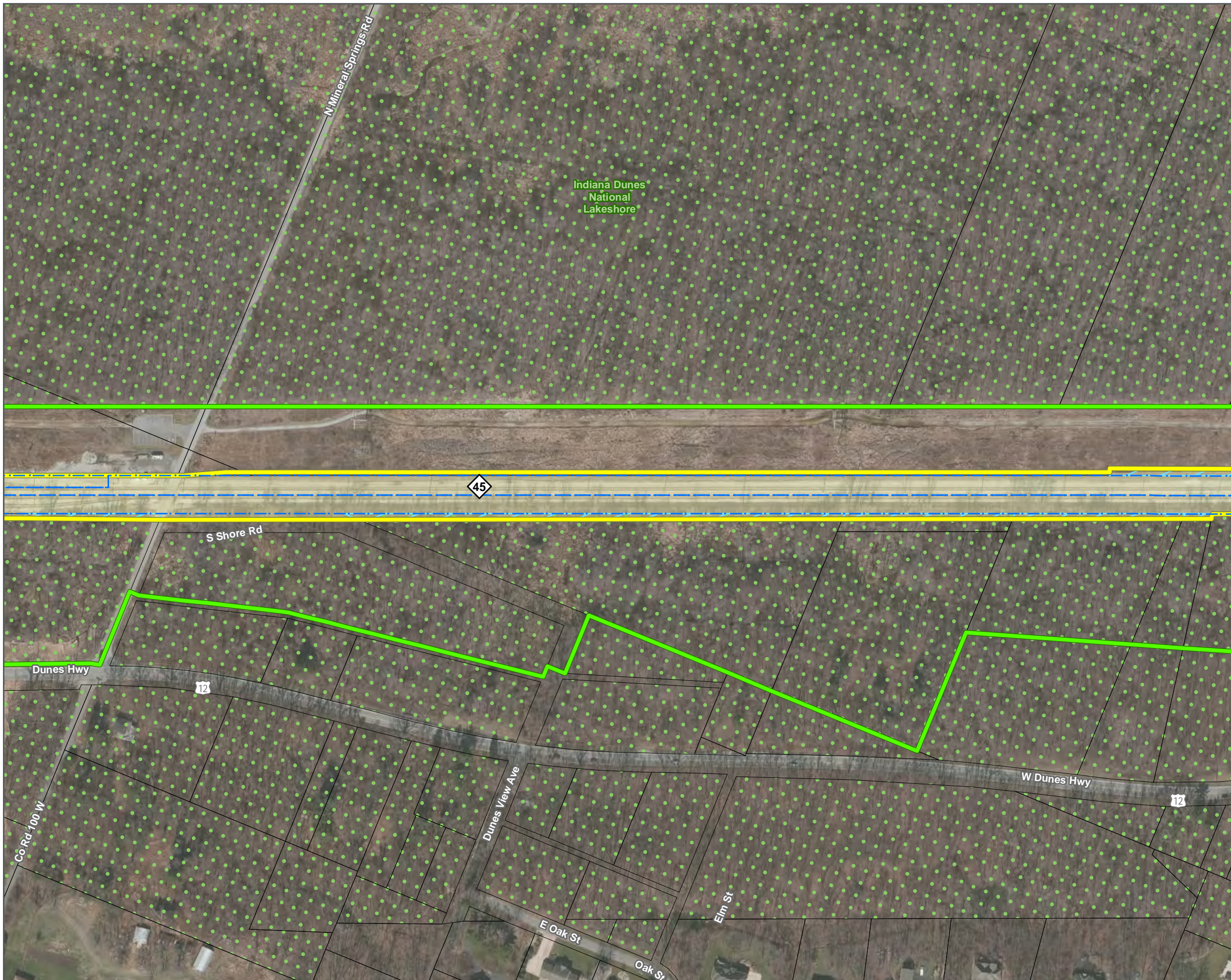




SHEET 30 OF 57

DATA SOURCES: Environmental Systems Research Institute, Indiana Historic Sites and Structures Inventory, National Resource Commission, Northern Indiana Commuter Transportation District, U.S. National Park Service, U.S. Census Bureau, U.S. Geological Survey, U.S. Department of the Interior, U.S. Fish & Wildlife Service  
BACKGROUND SOURCE: ESRI, DIGITALGLOBE, GEOEYE, EARTHSTAR GEOGRAPHICS, CNES/AIRBUS DS, USDA, USGS, AEX, GETMAPPING, AEROGRIID, IGN, IGP, SWISSTOPO, AND THE GIS USER COMMUNITY

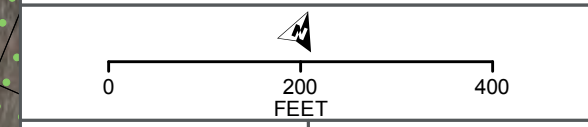




- Proposed Construction Footprint - 10/31/2016
- Proposed Direct Effects APE
- Proposed Indirect Effects APE
- Railroad Right-of-Way
- Milepost
- NICTD Station
- Proposed New NICTD Bridge
- Proposed Crossing Closure
- Proposed Station Parking
- Anticipated Property Take
- National Register of Historic Places  
Historic Property
- Indiana Historic Sites and Structures Inventory  
Surveyed Historic Resource – Outstanding
- Indiana Historic Sites and Structures Inventory  
Surveyed Historic Resource – Noteworthy
- Indiana Historic Sites and Structures Inventory  
Surveyed Historic Resource – Contributing
- Swedish Farmstead
- National Register of Historic Places  
Historic District
- Indiana Dunes National Lakeshore
- Indiana Dunes State Park
- Parcel Boundary

DATA FOR REFERENCE ONLY

**CULTURAL RESOURCES  
PROPOSED AREA OF  
POTENTIAL EFFECTS (APE)  
12/15/2016**



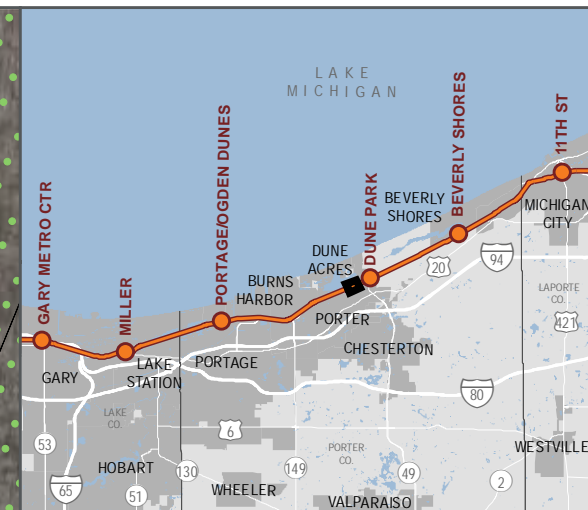




SHEET 31 OF 57

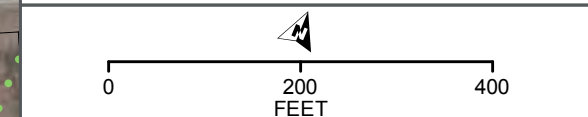
DATA SOURCES: Environmental Systems Research Institute, Indiana Historic Sites and Structures Inventory, National Resource Commission, Northern Indiana Commuter Transportation District, U.S. National Park Service, U.S. Census Bureau, U.S. Geological Survey, U.S. Department of the Interior, U.S. Fish & Wildlife Service  
BACKGROUND SOURCE: ESRI, DIGITALGLOBE, GEOEYE, EARTHSTAR GEOGRAPHICS, CNES/AIRBUS DS, USDA, USGS, AEX, GETMAPPING, AEROGRIID, IGN, IGP, SWISSTOPO, AND THE GIS USER COMMUNITY







- Proposed Construction Footprint - 10/31/2016
- Proposed Direct Effects APE
- Proposed Indirect Effects APE
- Railroad Right-of-Way
- Milepost
- NICTD Station
- Proposed New NICTD Bridge
- Proposed Crossing Closure
- Proposed Station Parking
- Anticipated Property Take
- National Register of Historic Places Historic Property
- Indiana Historic Sites and Structures Inventory Surveyed Historic Resource – Outstanding
- Indiana Historic Sites and Structures Inventory Surveyed Historic Resource – Noteworthy
- Indiana Historic Sites and Structures Inventory Surveyed Historic Resource – Contributing
- Swedish Farmstead
- National Register of Historic Places Historic District
- Indiana Dunes National Lakeshore
- Indiana Dunes State Park
- Parcel Boundary

**CULTURAL RESOURCES  
PROPOSED AREA OF  
POTENTIAL EFFECTS (APE)  
12/15/2016**



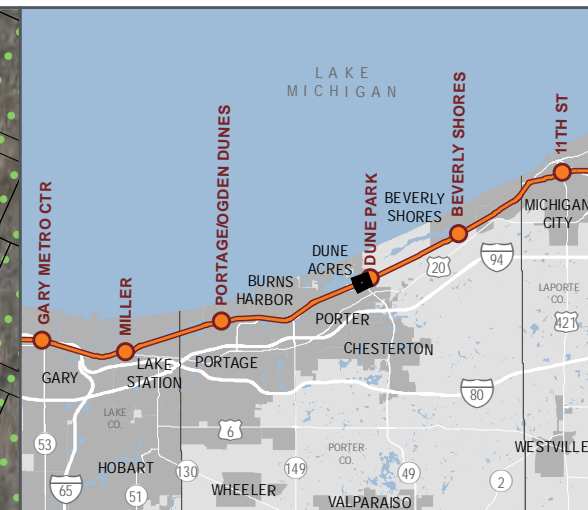
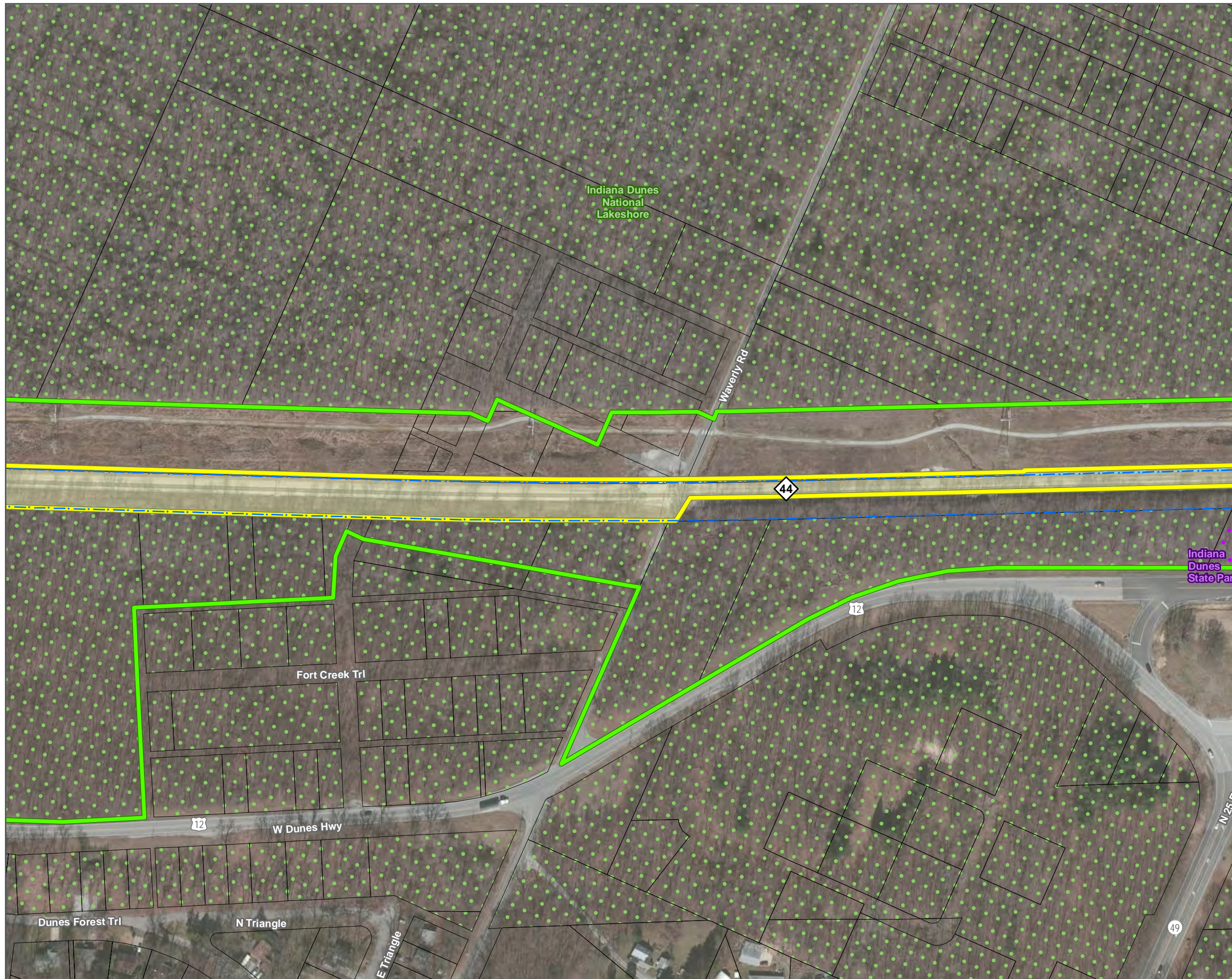




SHEET 32 OF 57

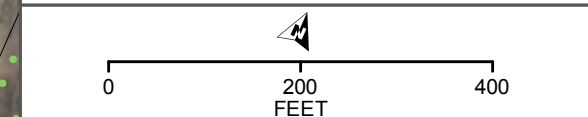
DATA SOURCES: Environmental Systems Research Institute, Indiana Historic Sites and Structures Inventory, National Resource Commission, Northern Indiana Commuter Transportation District, U.S. National Park Service, U.S. Census Bureau, U.S. Geological Survey, U.S. Department of the Interior, U.S. Fish & Wildlife Service  
BACKGROUND SOURCE: ESRI, DIGITALGLOBE, GEOEYE, EARTHSTAR GEOGRAPHICS, CNES/AIRBUS DS, USGS, AEX, GETMAPPING, AEROGRIID, IGN, IGP, SWISSTOPO, AND THE GIS USER COMMUNITY







- Proposed Construction Footprint - 10/31/2016
- Proposed Direct Effects APE
- Proposed Indirect Effects APE
- Railroad Right-of-Way
- Milepost
- NICTD Station
- Proposed New NICTD Bridge
- Proposed Crossing Closure
- Proposed Station Parking
- Anticipated Property Take
- National Register of Historic Places Historic Property
- Indiana Historic Sites and Structures Inventory Surveyed Historic Resource – Outstanding
- Indiana Historic Sites and Structures Inventory Surveyed Historic Resource – Noteworthy
- Indiana Historic Sites and Structures Inventory Surveyed Historic Resource – Contributing
- Swedish Farmstead
- National Register of Historic Places Historic District
- Indiana Dunes National Lakeshore
- Indiana Dunes State Park
- Parcel Boundary

**CULTURAL RESOURCES  
PROPOSED AREA OF  
POTENTIAL EFFECTS (APE)  
12/15/2016**



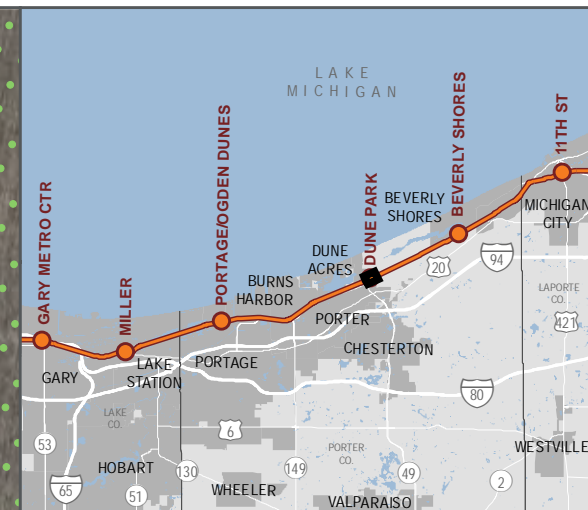




SHEET 33 OF 57

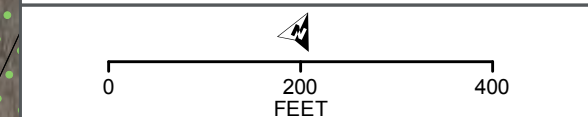
DATA SOURCES: Environmental Systems Research Institute, Indiana Historic Sites and Structures Inventory, National Resource Commission, Northern Indiana Commuter Transportation District, U.S. National Park Service, U.S. Census Bureau, U.S. Geological Survey, U.S. Department of the Interior, U.S. Fish & Wildlife Service  
BACKGROUND SOURCE: ESRI, DIGITALGLOBE, GEOEYE, EARTHSTAR GEOGRAPHICS, CNES/AIRBUS DS, USDA, USGS, AEX, GETMAPPING, AEROGRIID, IGN, IGP, SWISSTOPO, AND THE GIS USER COMMUNITY





- Proposed Construction Footprint - 10/31/2016
- Proposed Direct Effects APE
- Proposed Indirect Effects APE
- Railroad Right-of-Way
- Milepost
- NICTD Station
- Proposed New NICTD Bridge
- Proposed Crossing Closure
- P Proposed Station Parking
- Anticipated Property Take
- National Register of Historic Places  
Historic Property
- Indiana Historic Sites and Structures Inventory  
Surveyed Historic Resource – Outstanding
- Indiana Historic Sites and Structures Inventory  
Surveyed Historic Resource – Noteworthy
- Indiana Historic Sites and Structures Inventory  
Surveyed Historic Resource – Contributing
- Swedish Farmstead
- National Register of Historic Places  
Historic District
- Indiana Dunes National Lakeshore
- Indiana Dunes State Park
- Parcel Boundary

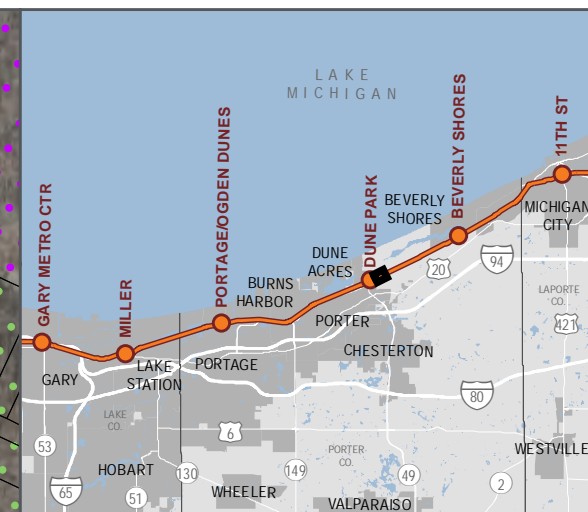
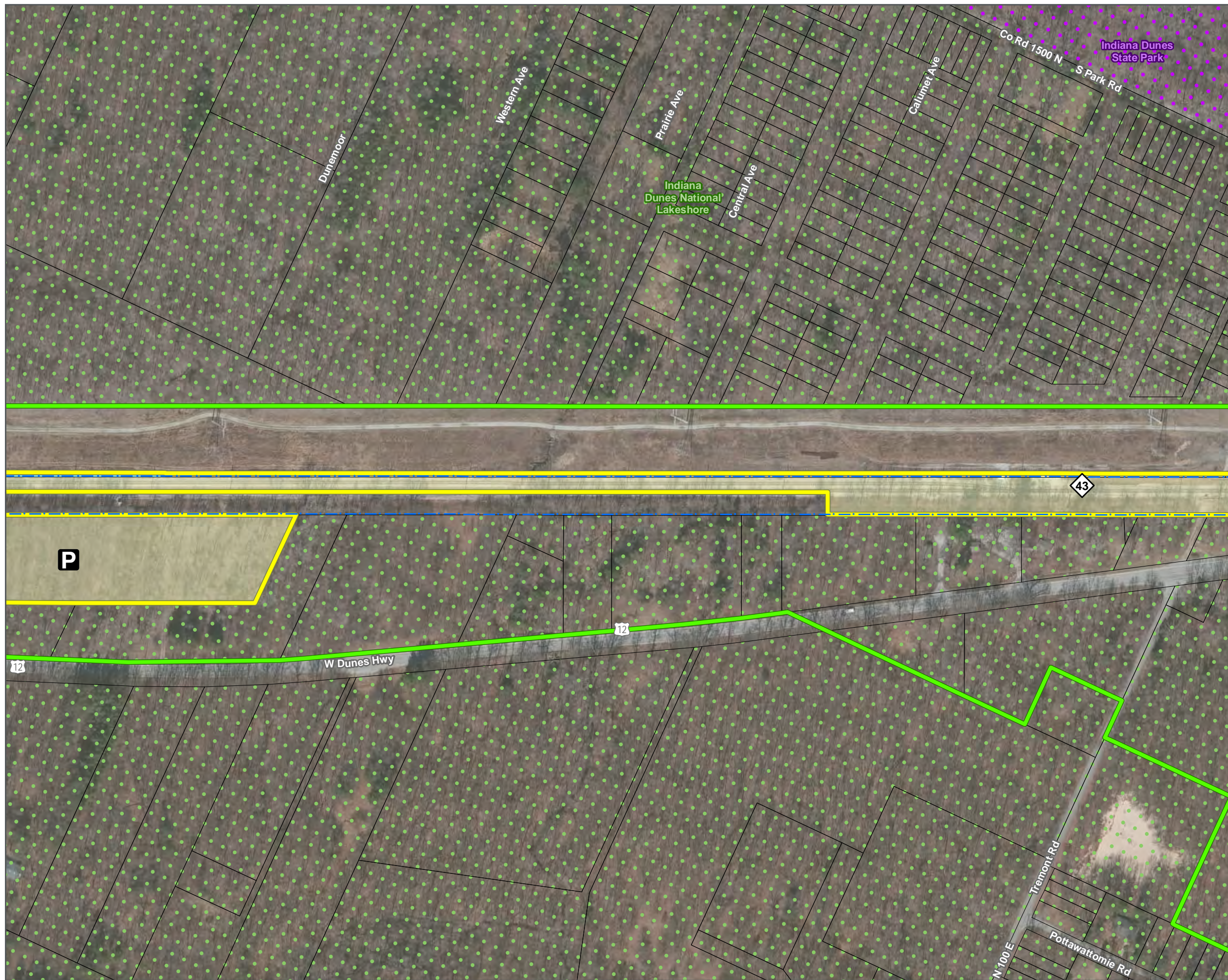
**CULTURAL RESOURCES  
PROPOSED AREA OF  
POTENTIAL EFFECTS (APE)  
12/15/2016**



SHEET 34 OF 57

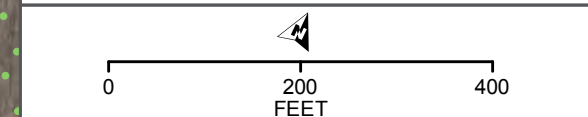
DATA SOURCES: Environmental Systems Research Institute, Indiana Historic Sites and Structures Inventory, National Resource Commission, Northern Indiana Commuter Transportation District, U.S. National Park Service, U.S. Census Bureau, U.S. Geological Survey, U.S. Department of the Interior, U.S. Fish & Wildlife Service  
BACKGROUND SOURCE: ESRI, DIGITALGLOBE, GEOEYE, EARTHSTAR GEOGRAPHICS, CNES/AIRBUS DS, USDA, USGS, AEX, GETMAPPING, AEROGRIID, IGN, IGP, SWISSTOPO, AND THE GIS USER COMMUNITY





- Proposed Construction Footprint - 10/31/2016
- Proposed Direct Effects APE
- Proposed Indirect Effects APE
- Railroad Right-of-Way
- Milepost
- NICTD Station
- Proposed New NICTD Bridge
- Proposed Crossing Closure
- Proposed Station Parking
- Anticipated Property Take
- National Register of Historic Places  
Historic Property
- Indiana Historic Sites and Structures Inventory  
Surveyed Historic Resource – Outstanding
- Indiana Historic Sites and Structures Inventory  
Surveyed Historic Resource – Noteworthy
- Indiana Historic Sites and Structures Inventory  
Surveyed Historic Resource – Contributing
- Swedish Farmstead
- National Register of Historic Places  
Historic District
- Indiana Dunes National Lakeshore
- Indiana Dunes State Park
- Parcel Boundary

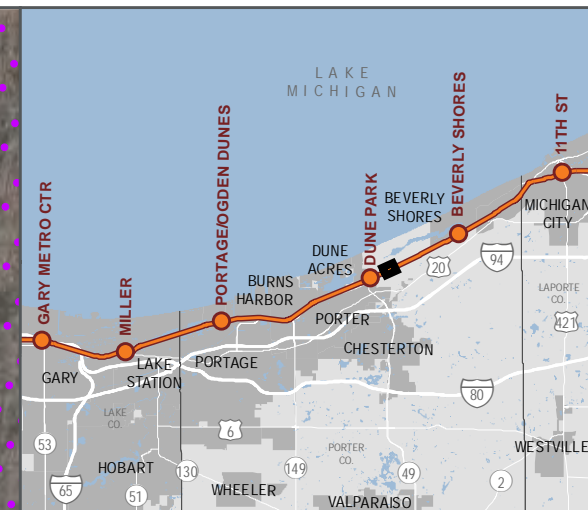
**CULTURAL RESOURCES  
PROPOSED AREA OF  
POTENTIAL EFFECTS (APE)  
12/15/2016**



SHEET 35 OF 57

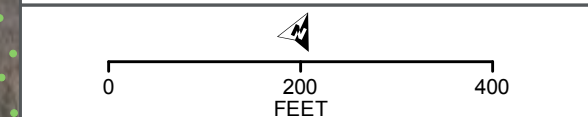
DATA SOURCES: Environmental Systems Research Institute, Indiana Historic Sites and Structures Inventory, National Resource Commission, Northern Indiana Commuter Transportation District, U.S. National Park Service, U.S. Census Bureau, U.S. Geological Survey, U.S. Department of the Interior, U.S. Fish & Wildlife Service  
BACKGROUND SOURCE: ESRI, DIGITALGLOBE, GEOEYE, EARTHSTAR GEOGRAPHICS, CNES/AIRBUS DS, USDA, USGS, AEX, GETMAPPING, AEROGRIID, IGN, IGP, SWISSTOPO, AND THE GIS USER COMMUNITY






- Proposed Construction Footprint - 10/31/2016
- Proposed Direct Effects APE
- Proposed Indirect Effects APE
- Railroad Right-of-Way
- Milepost
- NICTD Station
- Proposed New NICTD Bridge
- Proposed Crossing Closure
- Proposed Station Parking
- Anticipated Property Take
- National Register of Historic Places Historic Property
- Indiana Historic Sites and Structures Inventory Surveyed Historic Resource – Outstanding
- Indiana Historic Sites and Structures Inventory Surveyed Historic Resource – Noteworthy
- Indiana Historic Sites and Structures Inventory Surveyed Historic Resource – Contributing
- Swedish Farmstead
- National Register of Historic Places Historic District
- Indiana Dunes National Lakeshore
- Indiana Dunes State Park
- Parcel Boundary

**CULTURAL RESOURCES  
PROPOSED AREA OF  
POTENTIAL EFFECTS (APE)  
12/15/2016**



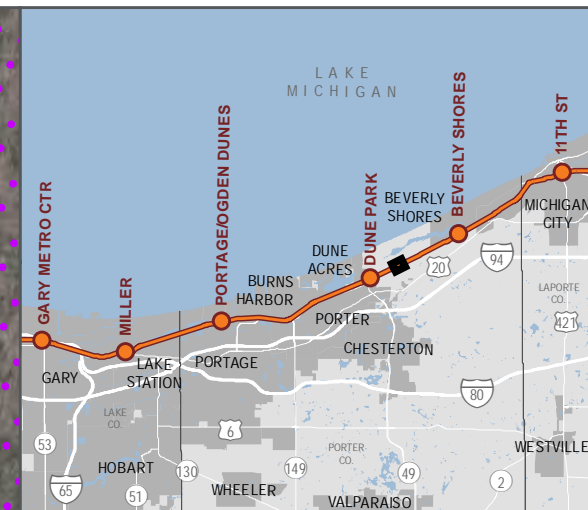




SHEET 36 OF 57

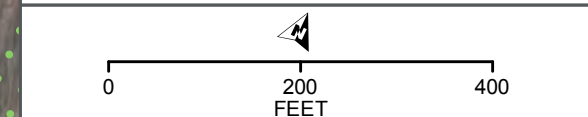
DATA SOURCES: Environmental Systems Research Institute, Indiana Historic Sites and Structures Inventory, National Resource Commission, Northern Indiana Commuter Transportation District, U.S. National Park Service, U.S. Census Bureau, U.S. Geological Survey, U.S. Department of the Interior, U.S. Fish & Wildlife Service  
BACKGROUND SOURCE: ESRI, DIGITALGLOBE, GEOEYE, EARTHSTAR GEOGRAPHICS, CNES/AIRBUS DS, USDA, USGS, AEX, GETMAPPING, AEROGRIID, IGN, IGP, SWISSTOPO, AND THE GIS USER COMMUNITY






- Proposed Construction Footprint - 10/31/2016
- Proposed Direct Effects APE
- Proposed Indirect Effects APE
- Railroad Right-of-Way
- Milepost
- NICTD Station
- Proposed New NICTD Bridge
- Proposed Crossing Closure
- Proposed Station Parking
- Anticipated Property Take
- National Register of Historic Places Historic Property
- Indiana Historic Sites and Structures Inventory Surveyed Historic Resource – Outstanding
- Indiana Historic Sites and Structures Inventory Surveyed Historic Resource – Noteworthy
- Indiana Historic Sites and Structures Inventory Surveyed Historic Resource – Contributing
- Swedish Farmstead
- National Register of Historic Places Historic District
- Indiana Dunes National Lakeshore
- Indiana Dunes State Park
- Parcel Boundary

**CULTURAL RESOURCES  
PROPOSED AREA OF  
POTENTIAL EFFECTS (APE)  
12/15/2016**



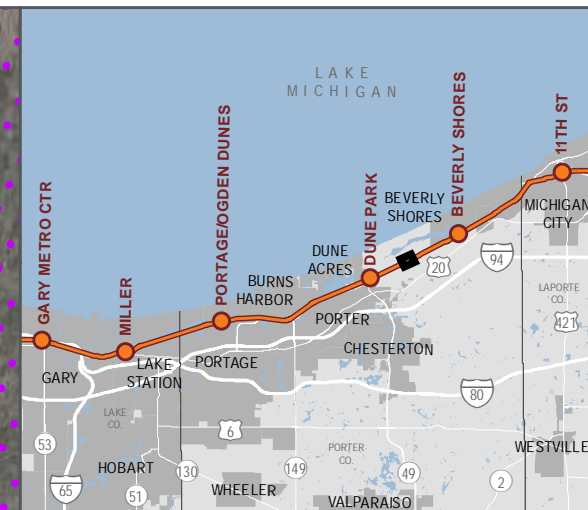




SHEET 37 OF 57

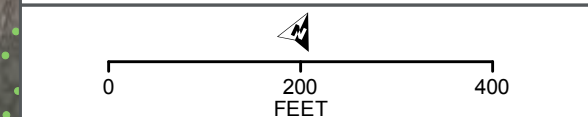
DATA SOURCES: Environmental Systems Research Institute, Indiana Historic Sites and Structures Inventory, National Resource Commission, Northern Indiana Commuter Transportation District, U.S. National Park Service, U.S. Census Bureau, U.S. Geological Survey, U.S. Department of the Interior, U.S. Fish & Wildlife Service  
BACKGROUND SOURCE: ESRI, DIGITALGLOBE, GEOEYE, EARTHSTAR GEOGRAPHICS, CNES/AIRBUS DS, USDA, USGS, AEX, GETMAPPING, AEROGRIID, IGN, IGP, SWISSTOPO, AND THE GIS USER COMMUNITY







- Proposed Construction Footprint - 10/31/2016
- Proposed Direct Effects APE
- Proposed Indirect Effects APE
- Railroad Right-of-Way
- Milepost
- NICTD Station
- Proposed New NICTD Bridge
- Proposed Crossing Closure
- Proposed Station Parking
- Anticipated Property Take
- National Register of Historic Places Historic Property
- Indiana Historic Sites and Structures Inventory Surveyed Historic Resource – Outstanding
- Indiana Historic Sites and Structures Inventory Surveyed Historic Resource – Noteworthy
- Indiana Historic Sites and Structures Inventory Surveyed Historic Resource – Contributing
- Swedish Farmstead
- National Register of Historic Places Historic District
- Indiana Dunes National Lakeshore
- Indiana Dunes State Park
- Parcel Boundary

**CULTURAL RESOURCES  
PROPOSED AREA OF  
POTENTIAL EFFECTS (APE)  
12/15/2016**



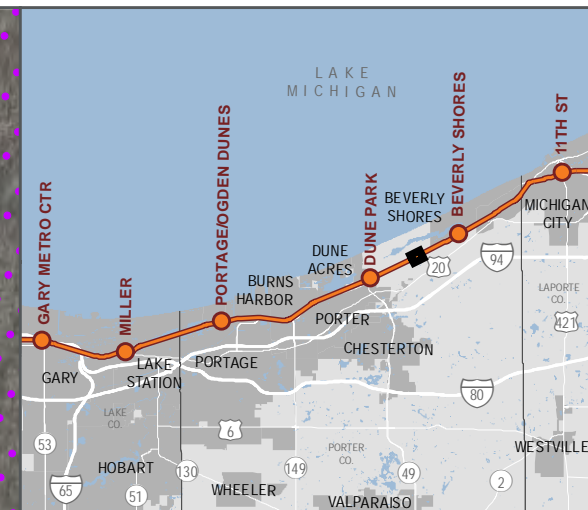
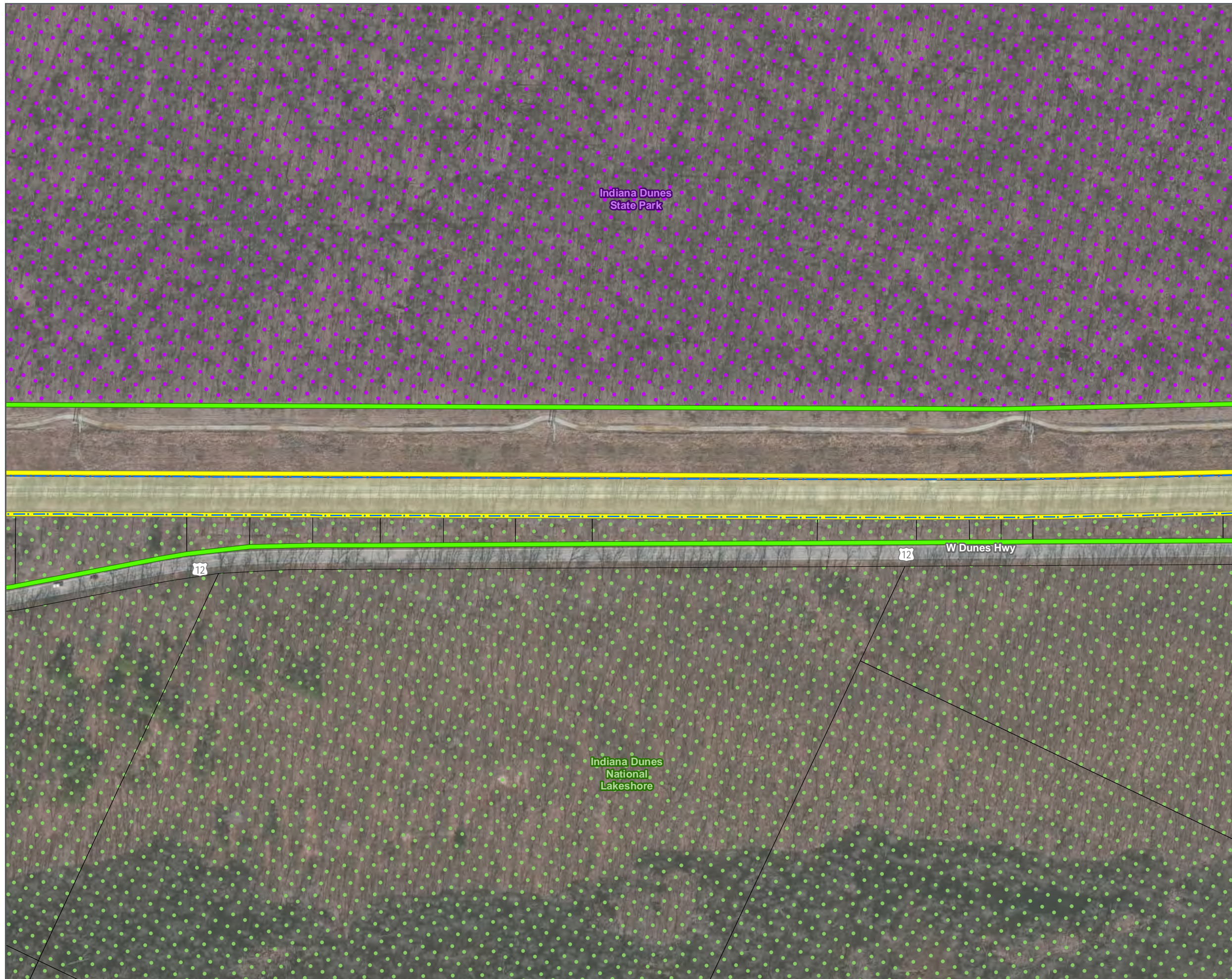




SHEET 38 OF 57

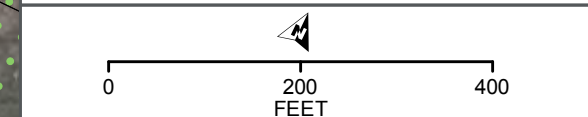
DATA SOURCES: Environmental Systems Research Institute, Indiana Historic Sites and Structures Inventory, National Resource Commission, Northern Indiana Commuter Transportation District, U.S. National Park Service, U.S. Census Bureau, U.S. Geological Survey, U.S. Department of the Interior, U.S. Fish & Wildlife Service  
BACKGROUND SOURCE: ESRI, DIGITALGLOBE, GEOEYE, EARTHSTAR GEOGRAPHICS, CNES/AIRBUS DS, USDA, USGS, AEX, GETMAPPING, AEROGRIID, IGN, IGP, SWISSTOPO, AND THE GIS USER COMMUNITY






- Proposed Construction Footprint - 10/31/2016
- Proposed Direct Effects APE
- Proposed Indirect Effects APE
- Railroad Right-of-Way
- Milepost
- NICTD Station
- Proposed New NICTD Bridge
- Proposed Crossing Closure
- Proposed Station Parking
- Anticipated Property Take
- National Register of Historic Places Historic Property
- Indiana Historic Sites and Structures Inventory Surveyed Historic Resource – Outstanding
- Indiana Historic Sites and Structures Inventory Surveyed Historic Resource – Noteworthy
- Indiana Historic Sites and Structures Inventory Surveyed Historic Resource – Contributing
- Swedish Farmstead
- National Register of Historic Places Historic District
- Indiana Dunes National Lakeshore
- Indiana Dunes State Park
- Parcel Boundary

**CULTURAL RESOURCES  
PROPOSED AREA OF  
POTENTIAL EFFECTS (APE)  
12/15/2016**



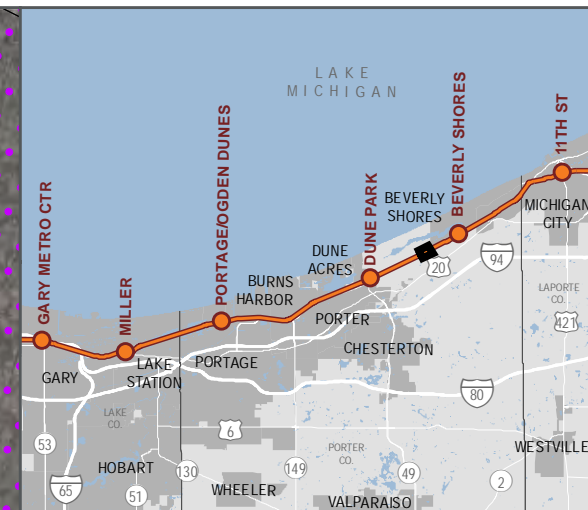
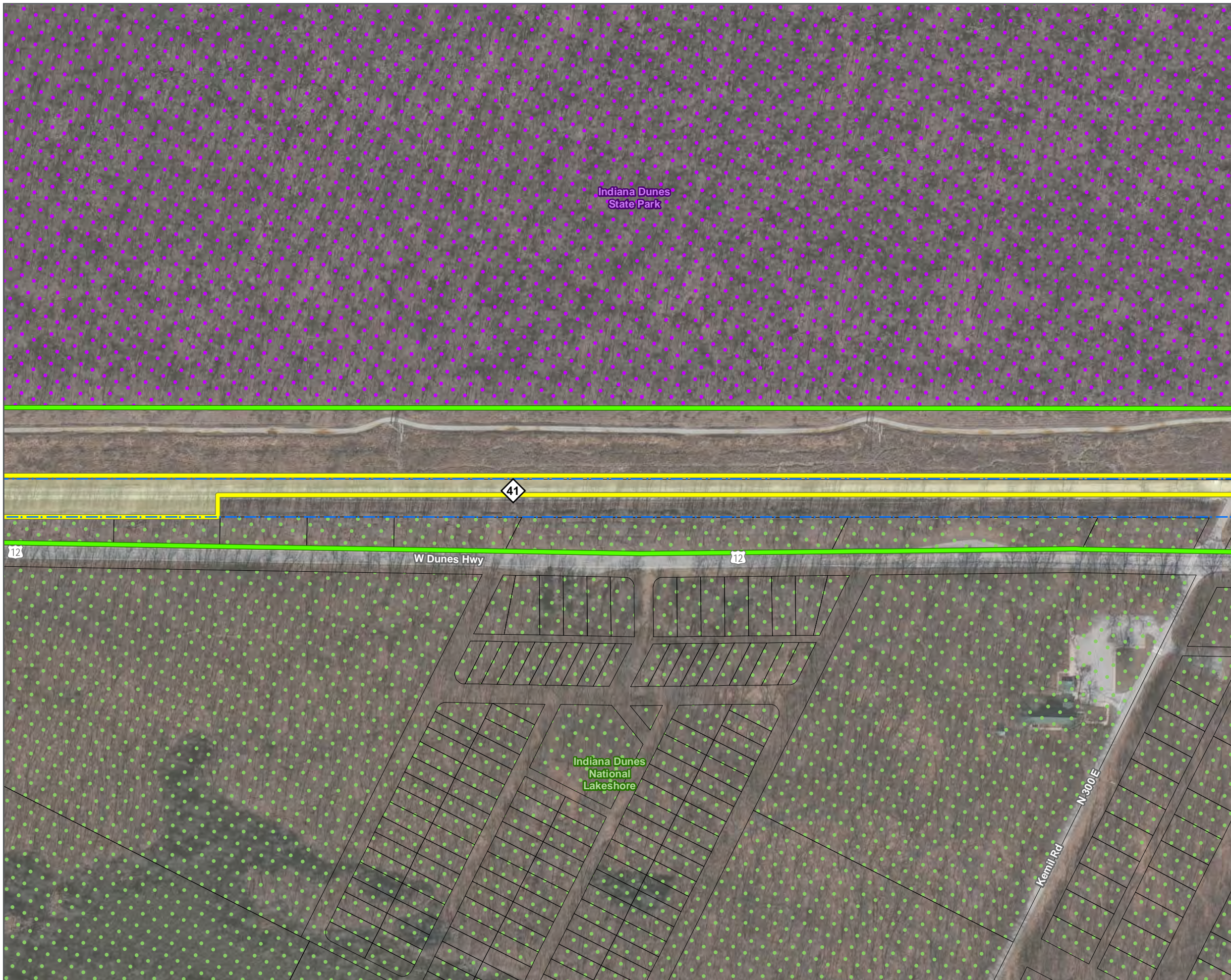




SHEET 39 OF 57

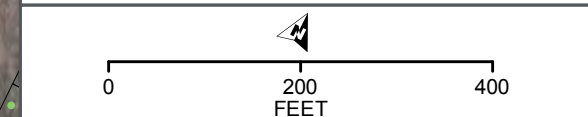
DATA SOURCES: Environmental Systems Research Institute, Indiana Historic Sites and Structures Inventory, National Resource Commission, Northern Indiana Commuter Transportation District, U.S. National Park Service, U.S. Census Bureau, U.S. Geological Survey, U.S. Department of the Interior, U.S. Fish & Wildlife Service  
BACKGROUND SOURCE: ESRI, DIGITALGLOBE, GEOEYE, EARTHSTAR GEOGRAPHICS, CNES/AIRBUS DS, USDA, USGS, AEX, GETMAPPING, AEROGRIID, IGP, SWISSTOPO, AND THE GIS USER COMMUNITY






- Proposed Construction Footprint - 10/31/2016
  - Proposed Direct Effects APE
  - Proposed Indirect Effects APE
  - Railroad Right-of-Way
  - Milepost
  - NICTD Station
  - Proposed New NICTD Bridge
  - Proposed Crossing Closure
  - Proposed Station Parking
  - Anticipated Property Take
  - National Register of Historic Places Historic Property
  - Indiana Historic Sites and Structures Inventory Surveyed Historic Resource – Outstanding
  - Indiana Historic Sites and Structures Inventory Surveyed Historic Resource – Noteworthy
  - Indiana Historic Sites and Structures Inventory Surveyed Historic Resource – Contributing
  - Swedish Farmstead
  - National Register of Historic Places Historic District
  - Indiana Dunes National Lakeshore
  - Indiana Dunes State Park
  - Parcel Boundary
- DATA FOR REFERENCE ONLY

**CULTURAL RESOURCES  
PROPOSED AREA OF  
POTENTIAL EFFECTS (APE)  
12/15/2016**







SHEET 40 OF 57

DATA SOURCES: Environmental Systems Research Institute, Indiana Historic Sites and Structures Inventory, National Resource Commission, Northern Indiana Commuter Transportation District, U.S. National Park Service, U.S. Census Bureau, U.S. Geological Survey, U.S. Department of the Interior, U.S. Fish & Wildlife Service  
BACKGROUND SOURCE: ESRI, DIGITALGLOBE, GEOEYE, EARTHSTAR GEOGRAPHICS, CNES/AIRBUS DS, USGS, AEX, GETMAPPING, AEROGRIID, IGN, IGP, SWISSTOPO, AND THE GIS USER COMMUNITY